



VIDEO, SECURITY & BEYOND

HIKVISION:
**Security
Solutions
for Cannabis
Companies**



Robust Security for Regulatory Compliance

Hikvision technology helps cannabis distributors, growers, and retailers to protect assets and meet local and state regulations—including 24/7 storage of security video, without exceeding budgets.

For example, Colorado's Marijuana Enforcement Division (MED) requires maintenance of 40 days of on- and off-site video recording. Hikvision offers NVRs and cloud recording options to help users meet these requirements.

SECURITY EQUIPMENT FOR BUSINESS INTELLIGENCE AND BETTER ROI

Hikvision's cutting edge technology with outstanding value makes it easier than ever to meet regulations and protect people and property .

Hikvision offers this and more:

- Affordable video monitoring and recording for regulatory compliance
- Point-of-Sale (POS) integration with in-store video for transaction verification and prevention of costly customer exceptions
- Smart retail applications, including Queue Management, Customer Traffic Counting, Multi-Target and Multi-Type Detection and Heat Mapping
- HikCentral, Hikvision's central video management system (VMS), enables easy management for single and multiple sites from one central location

LEGALIZATION

As of 2023, 38 states and DC have legalized cannabis for medical use, while 18 states and DC have legalized it for recreational use.

MARKET SIZE

The global legalized cannabis market size is expected to grow to \$82.3 billion by 2027.

Cannabis Industry Solution Overview



06



MAP LEGEND

01 Dispensaries:

Panoramic Monitoring, POS Overlay and smart retail solutions include Queue Management, Attribution Search, Customer Traffic Counting and Known Shoplifter Alarms to protect indoor retail operations.

02 Parking Lots:

Excellent low light performance and panoramic monitoring protect the parking lot and prevent vehicle damage complaints. License Plate Recognition (LPR) cameras help manage unauthorized parking.

03 Transportation:

Mobile surveillance and body-worn cameras are equipped to monitor the whole transportation process.

04 Grow Rooms & Cultivation:

Hikvision thermal cameras provide 24/7 monitoring without supplemental lighting so as to prevent harmful effects on the maturation cycle of the cannabis.

05 Production Areas:

Full coverage video monitoring protects against theft and damage. Indoor PTZs help monitor trim rooms and production processes to reduce theft and invalid SOPs. Hikvision thermal cameras can detect temperature anomalies and send instant alarms to prevent damage.

06 Perimeter Protection:

Perimeter protection is extremely important for proprietors. Hikvision provides efficient and cost-effective perimeter protection and human/vehicle detection solutions to prevent major loss due to intrusion.

07 Security Rooms:

HikCentral VMS provides unified video, alarm, and access control management and health monitoring in a central software hub, providing reliable and cost effective long term data protection.

For cultivation facilities, processing facilities, dispensaries, transportation, and security.

DISPENSARIES

DeepinView Cameras with ColorVu:

- Upgrade to a Smart Store with built-in AI technology including foot-traffic counting, attribute search and VIP recognition/known shoplifter alerts.
- Illuminate darkness with 24/7 color imaging and stunning low light performance with striking detail and smart hybrid light technology.
- Queue Management: Knowing customer wait times from check-in to being served will help increase customer satisfaction and management efficiency.



Panoramic Monitoring:

- Multiple cost effective panoramic and multi-sensor camera options with ultra-wide fields of view and human/vehicle detection allow one camera to cover large areas inside and outside the store.
- Gain full-color video coverage with the power of ColorVu to reduce the risk of theft and better identify

POS Overlay:

- POS integration provides in-store video for transaction verification and prevention of costly customer disputes, as well as employee theft.

PARKING

Reduce Risk of Vehicle Damage:

- Use a single high-resolution camera with 180 or 360-degree views to cover the complete area, ensuring any incidents in the parking lot are captured.
- Prevent customer complaints due to lack of video evidence when an incident happens.



Unauthorized Parking:

- Unauthorized parking in reserved parking spaces is more likely to happen in open parking lots.
- DeepinView LPR cameras with deep learning functions, motorized PTZ and 24/7 color imaging can detect unauthorized vehicles and notify security personnel to take action.

TRANSPORTATION

Mobile Security:

- Hikvision mobile NVRs and cameras are installed to monitor and record the whole transportation process.



Body Worn Camera:

- Drivers equipped with body worn cameras during working hours can lower risk of merchandise damage, theft and non-standard operations.

GROW ROOMS

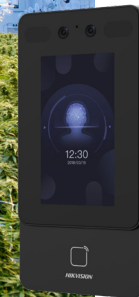
ColorVu+X Cameras:

- Our most advanced ColorVu+X lineup take our industry leading technology to the next level, integrating new features like panoramic and varifocal models, 4K, audio and strobe light, and deep learning with 24/7 full color video.
- Better low-light performance than previous generation cameras with built-in human detection for off-hour monitoring.
- No supplemental lighting prevents potential negative effects on the maturation cycle of cannabis.
- G2 Value Series ColorVu cameras may be used in place of traditional IR at a lower cost than prior models.



Standalone Access Control Terminals:

- With multiple modes of biometric authentication, unauthorized persons will be prevented from getting into facilities, even if they attempt to steal or borrow ID cards.



PRODUCTION AREAS

Panoramic Monitoring:

- This cost-effective panoramic security camera solution covers large areas inside storage rooms with one camera. Full coverage video security reduces the risk of theft and accidents.
- Indoor PTZ cameras can monitor trim rooms and production processes to reduce theft and invalid operating procedures.



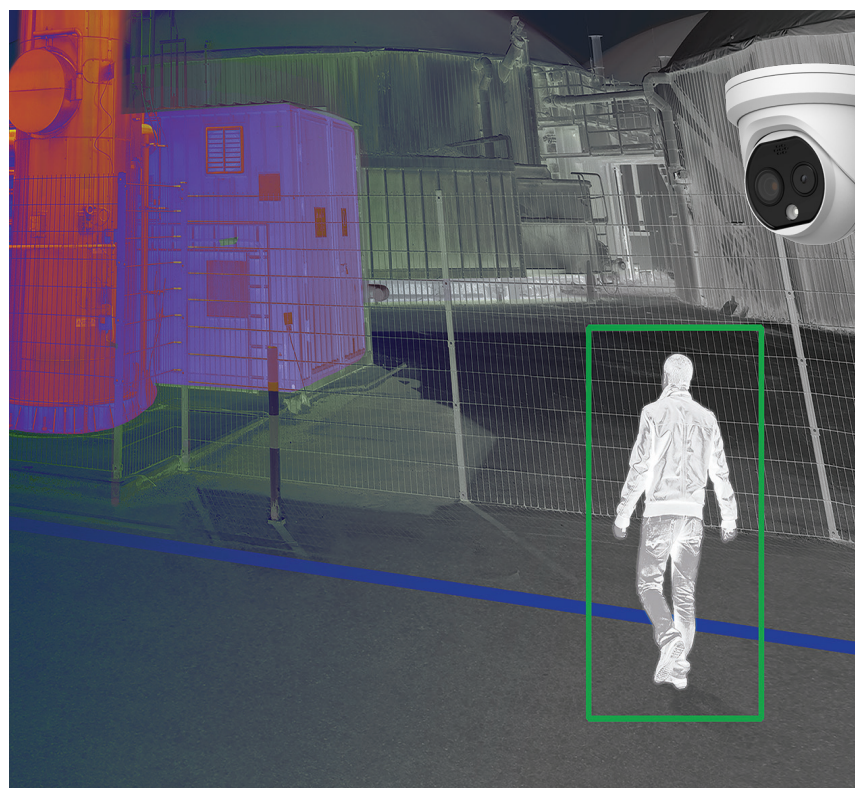
Early Fire Detection:

- Advanced bi-spectrum thermal technology detects abnormal temperature changes, providing early warnings of overheating or fire with unparalleled accuracy to improve asset protection.
- Instant alarm notifications are sent to security managers to enable immediate response.
- Thermal PTZ cameras deliver the ultimate flexibility and can be installed on moveable masts for 360-degree coverage. Our range of thermal products are also available in models with higher measurement accuracy levels to meet diverse end user applications.

PERIMETER PROTECTION

False Alarm Reduction:

- With an advanced deep learning algorithm, Hikvision AI cameras can filter false alarms caused by rain, leaves, and small animals, and only focus on humans and vehicles.
- Quick search for events helps reduce costs and the time needed to verify alarms.



Thermal Intrusion Detection:

- The latest generation of cost-effective bi-spectrum thermal cameras offer dual modules and built-in strobe light and audio alarms, making perimeter protection, early fire detection, and temperature monitoring faster and easier—even in the dark and in challenging weather conditions like fog, heavy rain and snow.



SECURITY ROOMS

HikCentral VMS:

- HikCentral is a powerful management software provided by Hikvision that can be scaled based on need, only adding the necessary licenses as requirements grow, keeping initial costs low.
- One unified platform provides video surveillance, access control management, evidence management, alarm management, and more.
- Health Monitoring minimizes any potential for video loss due to network failure.

Professional Network Switches:

- Hikvision's lineup of professional Hi-PoE, Gigabit Smart, and 100 Mbps Smart managed switches provide visual system health status, real-time alerts, and simplify daily troubleshooting, maintenance, and management. Our switches are plug-and-play, saving time and money.



Monitors and Accessories:

- Our 4K monitors are designed for video security, high reliability, and stability for 24/7 operations.
- Our powerful accessory lineup of keyboards, decoders, and more offer reliable operation and unmatched cost-effectiveness.

Video Storage:

- Advanced H.265/H.265+ video compression effectively reduces data storage requirements.
- Central Video Storage is low cost, reliable, and highly effective, fulfilling requirements for long-term and off-site video storage.





Advanced Features, Budget-Friendly Prices

Hikvision
Product
Catalog



Find your
local team



Hikvision USA Inc.
18639 Railroad Street
City of Industry, CA 91748

Contact Information
Toll-Free: +1 866-200-6690
Phone: +1 909-895-0400
Email: inside.usa@hikvision.com

Tech Support
Toll-free: +1-866-200-6690, press option 1
U.S. Email: techsupport.usa@hikvision.com

hikvision.com

Follow
Hikvision on
Social Media



VIDEO, SECURITY & BEYOND

Connect with us: [Twitter](#) [Facebook](#) [LinkedIn](#) [YouTube](#) [Instagram](#)

©2023 Hikvision USA Inc. and Hikvision Canada Inc. All rights reserved. Hikvision is a registered trademark of Hikvision Digital Technology Co., Ltd. in the US, Canada and other countries. All other trademarks, service marks, and product or service names are trademarks or registered trademarks of their respective owners. Product specifications and availability are subject to change without Notice.

05/16/23HK

HIKVISION