



Dashboard Camera

User Manual



See Far, Go Further

User Manual

©2018 Hangzhou Hikvision Digital Technology Co., Ltd.

About this Manual

This manual applies to Dashboard Camera.

This Manual is subject to domestic and international copyright protection. Hangzhou Hikvision Digital Technology Co., Ltd. (“Hikvision”) reserves all rights to this manual. This manual cannot be reproduced, changed, translated, or distributed, partially or wholly, by any means, without the prior written permission of Hikvision.

Trademarks

HIKVISION and other Hikvision marks are the property of Hikvision and are registered trademarks or the subject of applications for the same by Hikvision and/or its affiliates. Other trademarks mentioned in this manual are the properties of their respective owners. No right of license is given to use such trademarks without express permission.

Disclaimer

TO THE MAXIMUM EXTENT PERMITTED BY APPLICABLE LAW, HIKVISION MAKES NO WARRANTIES, EXPRESS OR IMPLIED, INCLUDING WITHOUT LIMITATION THE IMPLIED WARRANTIES OF MERCHANTABILITY AND FITNESS FOR A PARTICULAR PURPOSE, REGARDING THIS MANUAL. HIKVISION DOES NOT WARRANT, GUARANTEE, OR MAKE ANY REPRESENTATIONS REGARDING THE USE OF THE MANUAL, OR THE CORRECTNESS, ACCURACY, OR RELIABILITY OF INFORMATION CONTAINED HEREIN. YOUR USE OF THIS MANUAL AND ANY RELIANCE ON THIS MANUAL SHALL BE WHOLLY AT YOUR OWN RISK AND RESPONSIBILITY.

TO THE MAXIMUM EXTENT PERMITTED BY APPLICABLE LAW, IN NO EVENT WILL HIKVISION, ITS DIRECTORS, OFFICERS, EMPLOYEES, OR AGENTS BE LIABLE TO YOU FOR ANY SPECIAL, CONSEQUENTIAL, INCIDENTAL, OR INDIRECT DAMAGES, INCLUDING, AMONG OTHERS, DAMAGES FOR LOSS OF BUSINESS PROFITS, BUSINESS INTERRUPTION, SECURITY BREACHES, OR LOSS OF DATA OR DOCUMENTATION, IN CONNECTION WITH THE USE OF OR RELIANCE ON THIS MANUAL, EVEN IF HIKVISION HAS BEEN ADVISED OF THE POSSIBILITY OF SUCH DAMAGES.

SOME JURISDICTIONS DO NOT ALLOW THE EXCLUSION OR LIMITATION OF LIABILITY OR CERTAIN DAMAGES, SO SOME OR ALL OF THE ABOVE EXCLUSIONS OR LIMITATIONS MAY NOT APPLY TO YOU.

Regulatory Information

FCC Information

FCC compliance: This product has been tested and found to comply with the limits for a Class B digital device, pursuant to Part 15 of the FCC Rules. These limits are designed to provide reasonable protection against harmful interference in a residential installation. This product generates, uses, and can radiate radio frequency energy and, if not installed and used in accordance with the instructions, may cause harmful interference to radio communications. However, there is no guarantee that interference will not occur in a particular installation. If this product does cause harmful interference to radio or television reception, which can be determined by turning the equipment off and on, the user is encouraged to try to correct the interference by one or more of the following measures:

- Reorient or relocate the receiving antenna.
- Increase the separation between the equipment and receiver.
- Connect the equipment into an outlet on a circuit different from that to which the receiver is connected.
- Consult the dealer or an experienced radio/TV technician for help.

FCC Conditions

This device complies with part 15 of the FCC Rules. Operation is subject to the following two conditions:

1. This device may not cause harmful interference.
2. This device must accept any interference received, including interference that may cause undesired operation.

Please take attention that changes or modification not expressly approved by the party responsible for compliance could void the user's authority to operate the equipment.

This equipment complies with FCC/IC RSS-102 radiation exposure limits set forth for an uncontrolled environment.

This equipment should be installed and operated with minimum distance 20cm between the radiator & your body.

EU Conformity Statement

This product and - if applicable - the supplied accessories too are marked with "CE" and comply therefore with the



harmonized European standards listed under the Directive 2014/35/EU, the EMC Directive

2014/30/EU, RE Directive 2014/53/EU.



2012/19/EU (WEEE directive): Products marked with this symbol cannot be disposed of as unsorted municipal waste in the European Union. For proper recycling, return this product to your local supplier

upon the purchase of equivalent new equipment, or dispose of it at designated collection points. For more information see: www.recyclethis.info.



2006/66/EC (battery directive): This product contains a battery that cannot be disposed of as unsorted municipal waste in the European Union. See the product

documentation for specific battery information. The battery is marked with this symbol, which may include lettering to indicate cadmium (Cd), lead (Pb), or mercury (Hg). For proper recycling, return the battery to your supplier or to a designated collection point. For more information see: www.recyclethis.info.

Industry Canada ICES-003 Compliance

This device meets the CAN ICES-3 (B)/NMB-3(B) standards requirements.

Safety Instruction

These instructions are intended to ensure that user can use the product correctly to avoid danger or property loss. The precaution measure is divided into “Warnings” and “Cautions”

Warnings: Serious injury or death may occur if any of the warnings are neglected.

Cautions: Injury or equipment damage may occur if any of the cautions are neglected.



WARNING the product, you must be in strict compliance with the electrical safety regulations of the nation and region.

- Refer to technical specifications for detailed information.
- Input voltage should meet both the SELV (Safety Extra Low Voltage) and the Limited Power Source with AC 24V or DC 12V according to the IEC60950-1 standard. Refer to technical specifications for detailed information.
- Do not connect several devices to one power adapter as adapter overload may cause over-heating or a fire hazard.
- Make sure that the plug is firmly connected to the power socket.

- When the product is mounted on wall or ceiling, the device shall be firmly fixed.
- If smoke, odor or noise rise from the device, turn off the power at once and unplug the power cable, and then please contact the service center.
- If the product does not work properly, contact your dealer or the nearest service center. Never attempt to disassemble the camera by yourself. (We shall not assume any responsibility for problems caused by unauthorized repair or maintenance.)






WARNING

- Make sure the power supply voltage is correct before using the camera.
- Do not drop the camera or subject it to physical shock.
- Do not touch sensor modules with fingers. If cleaning is necessary, use clean cloth with a bit of ethanol and wipe it gently. If the camera will not be used for an extended period, replace the lens cap to protect the sensor from dirt.
- Do not aim the camera at the sun or extra bright places. Blooming or smearing may occur otherwise (which is not a malfunction), and affect the endurance of sensor at the same time.
- The sensor may be burned out by a laser beam, so when any laser equipment is in using, make sure that the surface of sensor will not be exposed to the laser beam.
- Do not place the camera in extremely hot, cold, dusty or damp locations, and do not expose it to high electromagnetic radiation.
- To avoid heat accumulation, good ventilation is required for operating environment.
- Keep the camera away from liquid while in use.
- While in delivery, the camera shall be packed in its original packing, or packing of the same texture.

Symbol Conventions

The symbols that may be found in this document are defined as follows.

Symbol	Description
 NOTE	Provides additional information to emphasize or supplement important points of the main text.
 WARNING	Indicates a potentially hazardous situation, which if not avoided, could result in equipment damage, data loss, performance degradation, or unexpected results.
 DANGER	Indicates a hazard with a high level of

	risk, which if not avoided, will result in death or serious injury.
--	---

1 Introduction

1.1 Product Features

Dashboard camera records the traffic status via access of multiple cameras.

Dashboard camera adopts integrated structure and design. It features with high resolution, wide field angle and easy installation, etc., which makes it suitable for variety traffic status.

The main features are as follows:

- Supports the access of 4-ch of TVI cameras ●
- Supports two-way audio
- Built-in Wi-Fi module, supports Wi-Fi AP ●
- Supports 4G network
- Supports preview, playback and editing parameters via APP
- Supports connecting to iVMS-5200 for uploading and playback
- Supports license recognition, object detection, abnormal detection etc.
- Easy installation and operation
- Low power consumption and high performance

NOTE

The smart analysis function subjects the device.

1.2 Overview

1.2.1 Camera

The overview of the camera is shown below.

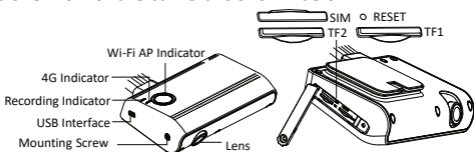


Figure 1-1 Overview

NOTE

- You can also turn on/off Wi-Fi AP by pressing Wi-Fi AP indicator.
- You can reboot the device by pressing RESET for 3s.

Indicator	Status	Description
REC Indicator	Solid	Recording is normal.
	Unlit	Recording exception. Check the TF card.
4G Indicator	Solid	4G signal is normal; platform has connected.
	Flashing	4G signal is normal; platform unconnected.
	Unlit	No signal.
Wi-FiAP Indicator	Solid->Fast Flashing	Wi-Fi AP is on. You can connect other device to Wi-Fi AP.
	Flashing->Slow Flashing	Wi-Fi AP is off. Press it to turn on.

1.2.2 Cable

The device's cables are shown in below.

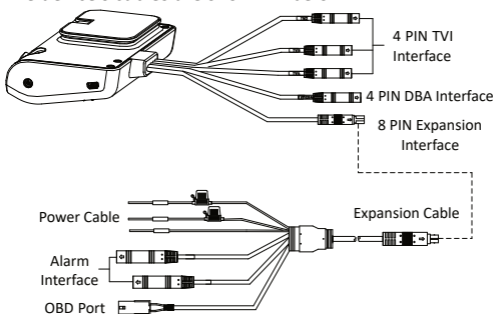


Figure 1-2 Cable Description

- 4 PIN TVI Interface: connect 4 PIN TVI camera
 - 4 PIN DBA Interface: connect 4 PIN DBA camera
 - 8 PIN Expansion Interface: connects expansion cable, involving:
 1. Power Cable: connect ACC with vehicle's ACC, VCC with vehicle battery's positive pole, GND with vehicle battery's negative pole.
 2. Alarm Interface: connect 4 PIN alarm button. Press alarm button to send alarm to the platform when in emergency.
- OBD Port: Connect serial port line for debugging.

WARNING

- The camera connected should be compatible to the device.
- The power supply of the dashboard camera subjects to the specification.

2 Installation

Before you start:

- Please make sure that the device in the package is in good condition and all the assembly parts are included.
- Make sure that all the related equipment is power-off during the installation.
- Check the specification of the products for the installation environment.
- Check whether the power supply is matched with your power output to avoid damage.
- Be sure that there is enough space to install the camera and accessories.
- Make sure the part, which is used to install the camera, is strong enough to withstand four times the weight of the camera and the mounting.
- If the product does not function properly, please contact your dealer or the nearest service center. Do not disassemble the camera for repair or maintenance by yourself.
- Do not pull and drag the camera cables hard.

2.1 Install TF Card and SIM Card

You can install TF card and SIM card according to needs.

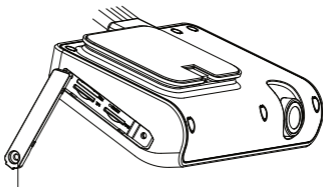


WARNING

- TF card will be overwritten when it's full. The former recording will be covered automatically. Please backup recording when accident occurred.
- SIM card is used to connect 3G/4G network. The installation of SIM card and TF card is same.

Steps:

1. Remove the screw, open the card cover.



Remove the screw.

Figure 2-1 Open Card Cover

2. Push the TF card (self-provided) into the slot until you hear a click.
3. Cover back the card cover, and tighten the screw.

2.2 Install Dashboard Camera

Steps:

1. Clean the mounting surface with a mixture of isopropyl and water.

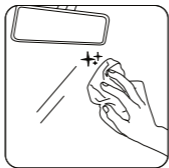


Figure 2-2 Clean Mounting Surface

2. Remove the stand from the device.

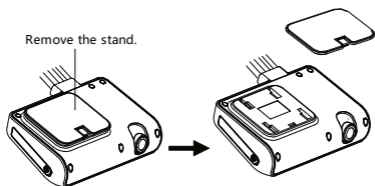


Figure 2-3 Remove the Stand

3. Peel the paster off the stand.

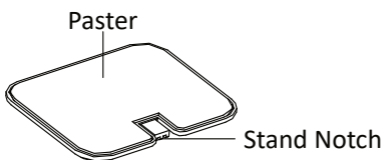


Figure 2-4 Peel the Paster

4. Paste the stand to the mounting surface with stand notch vertically downward.
5. Push the dashboard camera to the stand along the notch direction, until the camera stuck to the notch.
6. Adjust the lens to the target angle.
7. Remove the camera from the stand. Tighten the set screw of the lens. Attach the camera to the stand again. Installation finished.

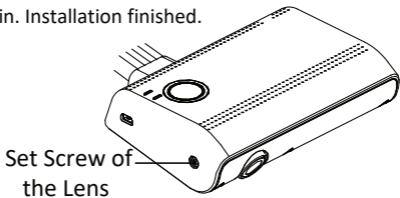


Figure 2-5 Fix the Lens

2.3 Wiring and Start Device

Steps:

1. (Optional) Connect TVI camera to the dashboard camera's TVI interface according to needs.
2. Connect the dashboard camera's power cable to the vehicle's battery:
 - a. Connect ACC with vehicle's ACC;
 - b. Connect VCC with vehicle battery's positive pole;
 - c. Connect GND with vehicle battery's negative pole.
3. The dashboard camera starts automatically once the vehicle started. Check the recording indicator.

If recording indicator is bright and steady, the camera is started normally.

NOTE

- Dashboard camera starts recording automatically after powered on.
- Contact the dealer to obtain the APP to manage the device.

3 Trouble Shooting

Trouble	Solution
Starting dashcam failed.	<ul style="list-style-type: none">● Ensure the automobile's battery met the needs of the camera.● Ensure the power cable is connected normally.● Ensure the automobile started normally and the power supply is normal.
Recording failed.	<ul style="list-style-type: none">● Ensure TF card is installed. (8G, Class 10 or above)● Check TF card status, e.g., its format and lifespan. If it is not well, replace it with a good one.
Recorded videos are fuzzy.	<ul style="list-style-type: none">● Tear off the proof film on lens.● Clean the lens and glass.