



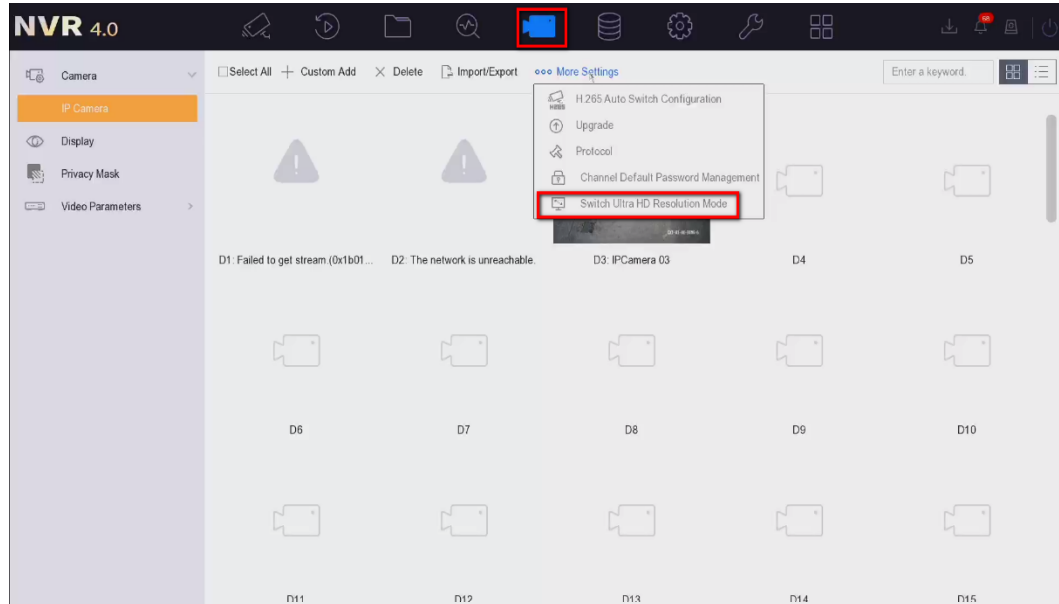
How to Add Ultra HD Resolution IP Camera to NVR

Title:	How to Add Ultra HD Resolution IP Camera to NVR	Version:	v1.0	Date:	8/13/2020
Product:	NVR			Page:	1 of 2

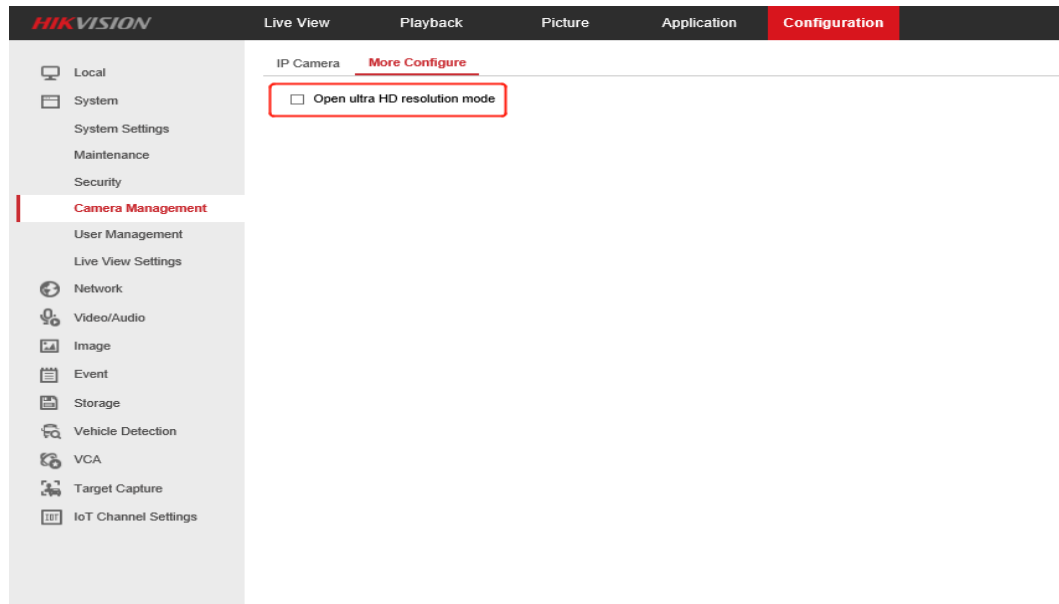
How to Add Ultra HD Resolution IP Camera to NVR

1. Key Step 1---Enable the Ultra HD Resolution Mode

Local GUI:

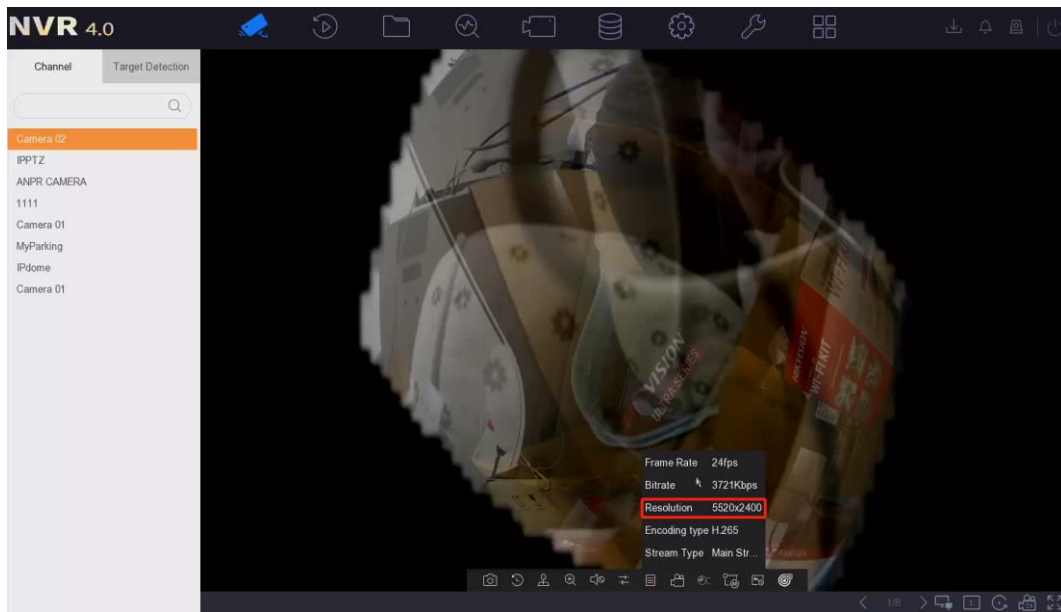


Web:



2. Key Step 2---Follow the normal way of adding cameras to add the Ultra HD Resolution multi-track streams IP Camera

Title:	How to Add Ultra HD Resolution IP Camera to NVR	Version:	v1.0	Date:	8/13/2020
Product:	NVR			Page:	2 of 2



Note:

1. Before adding the Ultra HD Resolution multi-track streams IP Camera, you need to enable the Ultra HD Resolution Mode. After the mode is turned on, the number of 32-channels NVR will be reduced by 8 channels, and the other channels NVR is unchanged.
2. POE NVR do not support adding Ultra HD Resolution multi-track streams IP Camera.
3. Currently, **only channel 1** on the NVR is supported to add Ultra HD Resolution IP Camera, only storage is supported, and picture capture is not supported.
4. Support single-screen live view and playback of multi-track streams UHD resolution IPC. The specific model of IPC is: panoramic series camera with up to 32MP resolution, DS-2CD6944G0 and DS-2CD6984G0.
5. Support the built-in alarms of high-resolution cameras, such as behavior analysis.



See Far, Go Further