



## **How to Configure Heat Map Function**

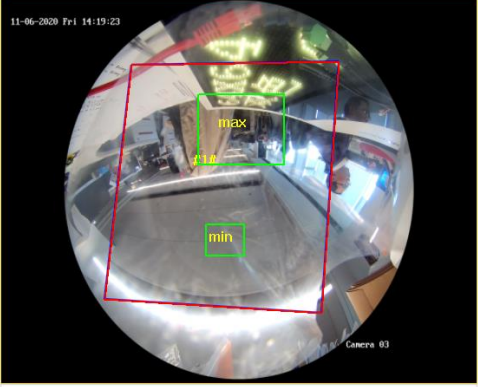
<b>Title:</b>	<b>How to Configure Heat Map Function</b>	<b>Version:</b>	v1.0	<b>Date:</b>	11/04/2020
<b>Product:</b>	IPC			<b>Page:</b>	1 of 6

1. Enter the Heat Map configuration interface: **Configuration > Heat Map Configuration**
2. Check the checkbox of **Enable Heat Map** to enable the function.

**Rule** Shield Region

Enable Heat Map

Area Settings | Arming Schedule | Linkage Method



11-06-2020 Fri 14:19:23

Camera 03

Max. Size | Min. Size | Draw Area | Select All | Clear

**Basic Settings**

Validity  45

Uploading Data Type Dwell Time and Heat Map of People

**Email Report**

Data Type  Daily Report  Weekly Report  Monthly Report

Annual Report

3. Click **Draw Area** to define the area you want to count the visitors. Draw area by left click four end-points in the live view window, and right click to finish the area drawing.

**Note:** You can click **Select All** to select the whole live view window as the configured area. Or click **Clear** to delete the current drawn area.

4. Set the **Max. Size** and **Min. Size** for valid targets by clicking the corresponding button and drawing on live image. Targets smaller or larger than the valid target size are not able to trigger detection.

**Max.Size:** The maximum size of a valid target. Targets with larger sizes would not trigger detection.

**Min.Size:** The minimum size of a valid target. Targets with smaller sizes would not trigger detection.


5. Configure the parameters of Heat Map.

**Validity:** Camera use this value to judge if a target it detects is a valid one or not. Invalid target will not be included in the statistics. The higher you set the value, the harder a target would be treated as a valid one.

**Uploading Data Type:** There are two options selectable for uploading data type. **Dwell Time** and **Dwell Time and Heat Map of People**. The uploading data will only upload Dwell time information if selecting Dwell Time type; if selecting Dwell Time and Heat Map of People, the data it will contain Dwell time and Heat Map of people.

**Email Report:** The data report can be delivered by email. The report type includes **Daily Report**, **Weekly Report**, **Monthly Report** and **Annual Report**.

**Basic Settings**

Validity  45

Uploading Data Type Dwell Time and Heat Map of People ▾

**Email Report**

Data Type  Daily Report  Weekly Report  Monthly Report

Annual Report

- Go to Arming Schedule tab, and click-and-drag the mouse on the time bar to set the arming schedule.

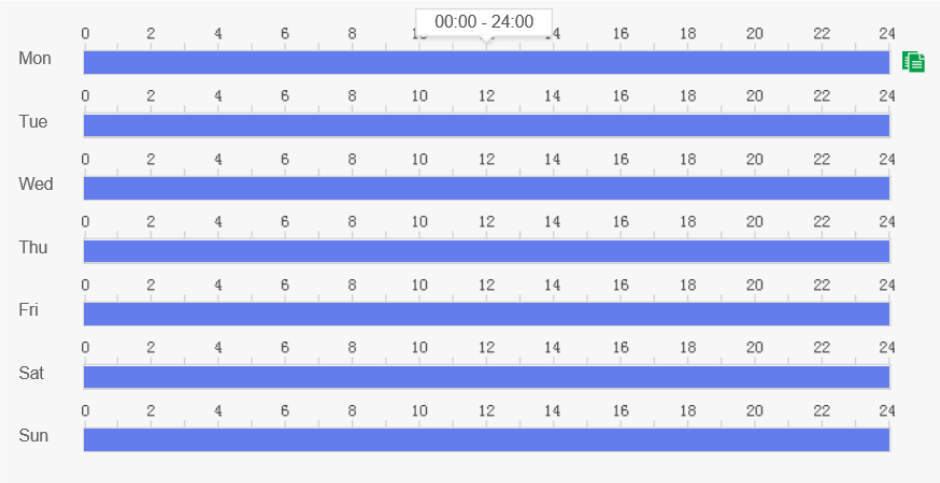
**Rule** Shield Region

---

Enable Heat Map

Area Settings Arming Schedule Linkage Method

✕ Delete 🗑 Delete All



**Save**

- Go to **Linkage Method** tab, and select the linkage method by checking the checkbox of notify the surveillance center.

<b>Title:</b>	<b>How to Configure Heat Map Function</b>	<b>Version:</b>	v1.0	<b>Date:</b>	04/11/2020
<b>Product:</b>	IPC			<b>Page:</b>	3 of 6

**Rule** Shield Region

Enable Heat Map

Area Settings

Arming Schedule

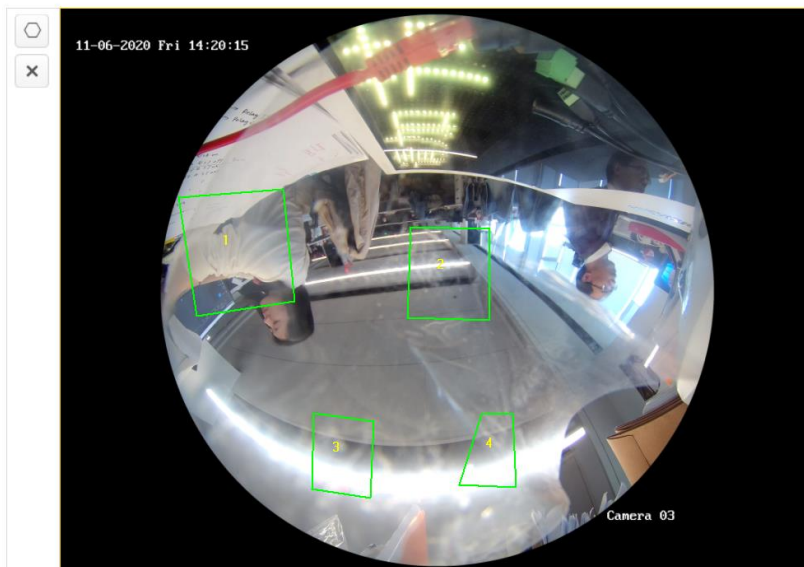
Linkage Method

Normal Linkage

Notify Surveillance Center

8. Configure **Shield Region** if necessary. Shield Region is used to shield the area which doesn't want to count the heat map statistics. Up to 4 shield regions are configurable.

Rule **Shield Region**



9. Click Save to save the above settings.  
 10. The heat map statistics will be calculated in Application tab. Go to **Application** to check the counting statistics.

Steps:

- 1) Select the report type. Daily report, monthly report, weekly report, and annual report are selectable.
- 2) Select the Statistics Type. By Dwell Time and By Heat Map of People are selectable.
- 3) Set the Statistics Time. If you select the report type as anyone other than daily report, the camera generates reports for the week, calendar month and calendar year that the set date belongs to.
- 4) Select the chart mode for statistics showing. For heat map, Time Heat Map and Space Heat Map are selectable.
- 5) Click Counting to start calculating.

**Notes:**

When you choose Time Heat Map, you can export the data in a excel file by clicking the Export on top right corner of the interface and setting the saving path.

<b>Title:</b>	<b>How to Configure Heat Map Function</b>	<b>Version:</b>	v1.0	<b>Date:</b>	04/11/2020
<b>Product:</b>	IPC	<b>Page:</b>	4 of 6		

HIKVISION®
Live View
Playback
Picture
Application
Configuration

People Counting Statistics
Heat Map Statistics
Intersection Analysis Report

**Search Conditions**

Report Type  
Daily Report ▼

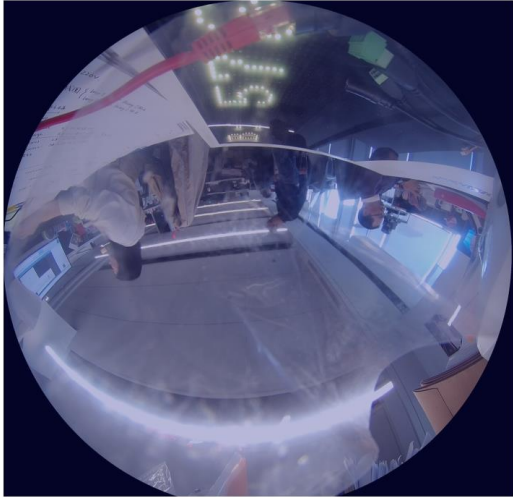
Statistics Type  
By Dwell Time ▼

Statistics Time  
2020-11-06 📅

Counting

**Statistics Results**

Space Heat Map
Time Heat Map





See Far, Go Further