

<b>Title:</b>	DS-PWA32 How to Configure Wireless Control Panel in HikCentral	<b>Version:</b>	v1.0	<b>Date:</b>	04/10/2019
<b>Product:</b>	AX Series Wireless Security Control Panel			<b>Page:</b>	1 of 9

## Preparation

1. AX Series Wireless Security Control Panel, V1.0.0 or above
2. HikCentral V1.4.0

## DS-PWA32 How to Configure Wireless Control Panel in HikCentral

When you want pop-up windows in HikCentral Client, you need configure something by HikCentral website and Client..

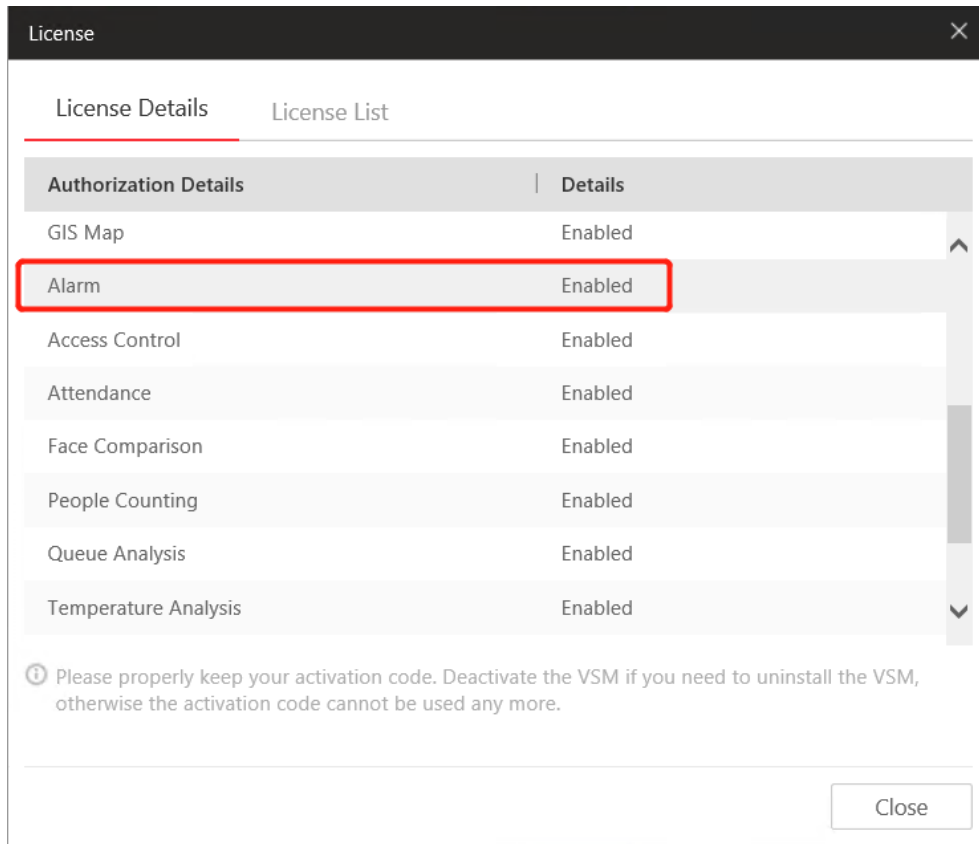
1. Check the **license** for **Alarm input number** and **Alarm module**.

Authorization Details	Details
Camera(Exclude Cameras Imported from Site)	1/100
Access Point	0/50
<b>Alarm Input (Security Control Device)</b>	<b>3/2048</b>
Recording Server	1/64
Remote Site ⓘ	0/5
UVSS	0/4
ANPR	Enabled
Smart Wall	Enabled

ⓘ Please properly keep your activation code. Deactivate the VSM if you need to uninstall the VSM, otherwise the activation code cannot be used any more.

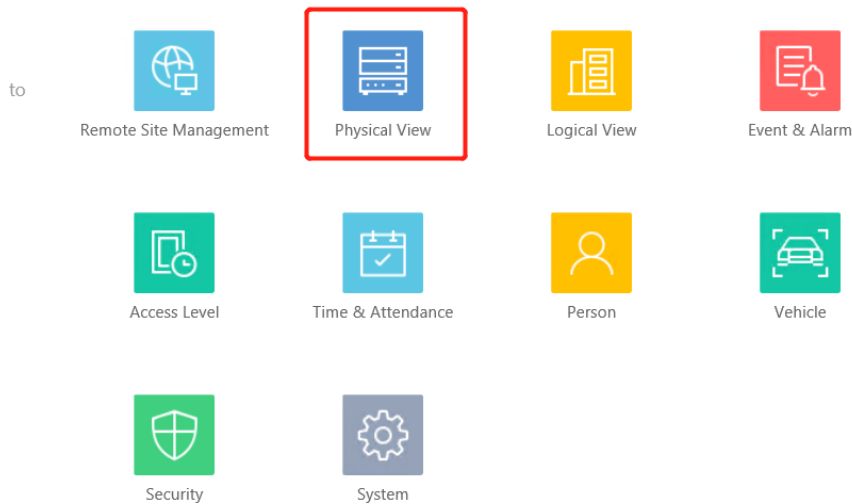
Close

<b>Title:</b>	DS-PWA32 How to Configure Wireless Control Panel in HikCentral	<b>Version:</b>	v1.0	<b>Date:</b>	04/10/2019
<b>Product:</b>	AX Series Wireless Security Control Panel			<b>Page:</b>	2 of 9



## 2. Add DS-PWA32-HSR Wireless Security Control Panel to HikCentral.

### 1. Choose Physical View



<b>Title:</b>	DS-PWA32 How to Configure Wireless Control Panel in HikCentral	<b>Version:</b>	v1.0	<b>Date:</b>	04/10/2019
<b>Product:</b>	AX Series Wireless Security Control Panel			<b>Page:</b>	3 of 9

## 2. Choose Security Control Device, add device IP to HikCentral

**HikCentral Professional Web Client**

Encoding Device  
Access Control Device  
**Security Control Device**  
Dock Station  
Application Data Server  
Recording Server  
Streaming Server  
Facial Recognition Server  
Smart Wall

### Add Security Control Device

**Basic Information**

\* Adding Mode  IP Address  
 Hik-Connect  
 IP Segment  
 Port Segment  
 Batch Import

\* Device Address  ✓ 1

\* Device Port  ✓ 2  
Port 80

\* Alias  ✓ 3

\* User Name  ✓

\* Password  ✓ 4  
Strong

**Time Zone**

Time Zone of Device  View

When the time zone of the device and the system are not consistent, the system will automatically adjust the time zone of the device.

Add Add and Continue Cancel

## 3. Configure Map.

1. Choose Logical View.
2. Choose Alarm Inputs.
3. Click Wireless zone 1\_Hub, and add the Alarm in point to map.

<b>Title:</b>	DS-PWA32 How to Configure Wireless Control Panel in HikCentral	<b>Version:</b>	v1.0	<b>Date:</b>	04/10/2019
<b>Product:</b>	AX Series Wireless Security Control Panel			<b>Page:</b>	4 of 9

**HikCentral Professional Web Client**

Hub

Entry... (0) | Mult... (0) | Anti... (0) | Secu... (1)

Cameras Access Points **Alarm Inputs** Alarm Outputs UVSSs

+ Add Delete Move to other Area Include Sub-area Search

Name	Device	Area	Added to Map
Wireless zone 1_H...	Hub	Hub	No
Wireless zone 2_H...	Hub	Hub	No
Wireless zone 3_H...	Hub	Hub	No
Wireless zone 4_H...	Hub	Hub	No
Wireless zone 5_H...	Hub	Hub	No
Wireless zone 6_H...	Hub	Hub	No
Wireless zone 7_H...	Hub	Hub	No
Wireless zone 8_H...	Hub	Hub	No
Wireless zone 9_H...	Hub	Hub	No
Wireless zone 10_...	Hub	Hub	No
Wireless zone 11_...	Hub	Hub	No
Wireless zone 12_...	Hub	Hub	No

Total 32 Record(s) 100 /1 Go

**HikCentral Professional Web Client**

Wireless zone 1\_Hub

Event Settings

No available event information found for the resource.

Configuration

Map Settings

Add to Map

GPS Location 235 Xiang Dao, Dingcheng Qu, Chang...

Icon Style Add New

Name Color

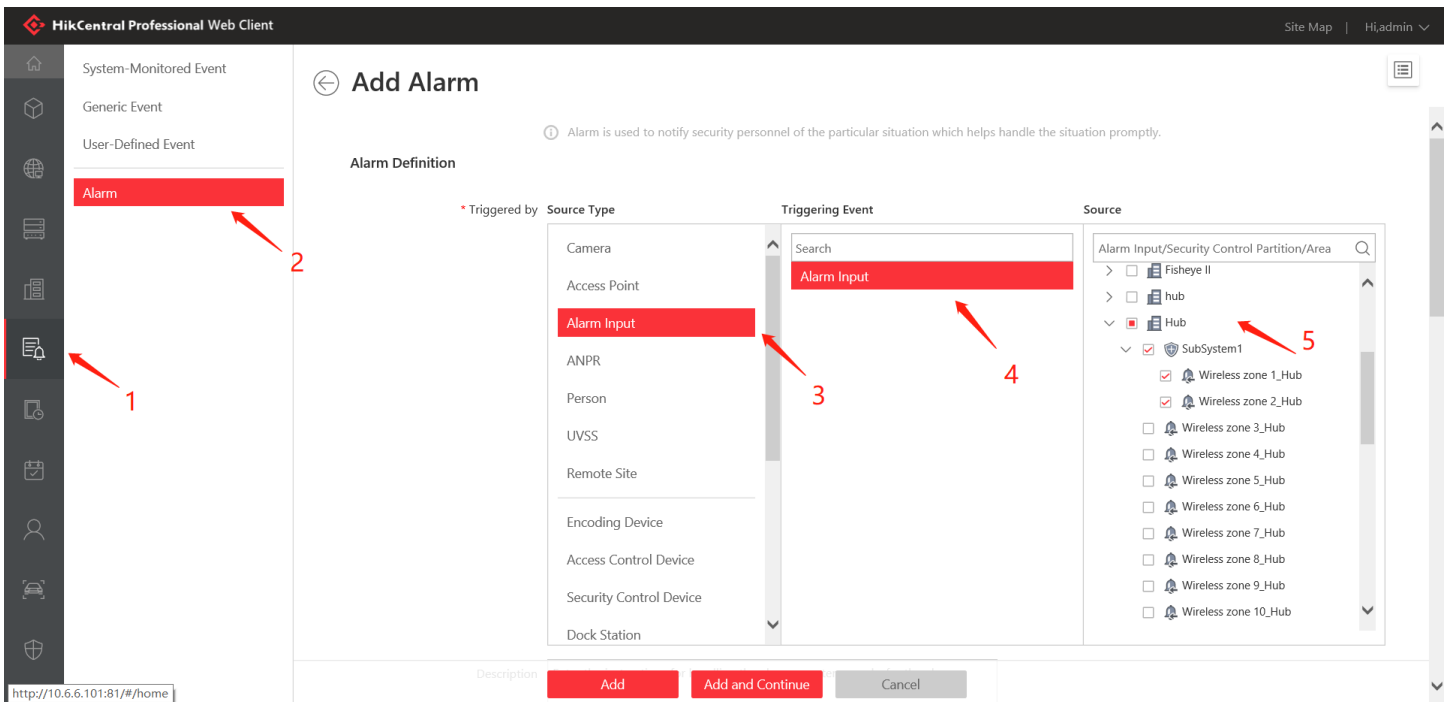
Remark

Save Cancel

<b>Title:</b>	DS-PWA32 How to Configure Wireless Control Panel in HikCentral	<b>Version:</b>	v1.0	<b>Date:</b>	04/10/2019
<b>Product:</b>	AX Series Wireless Security Control Panel			<b>Page:</b>	5 of 9

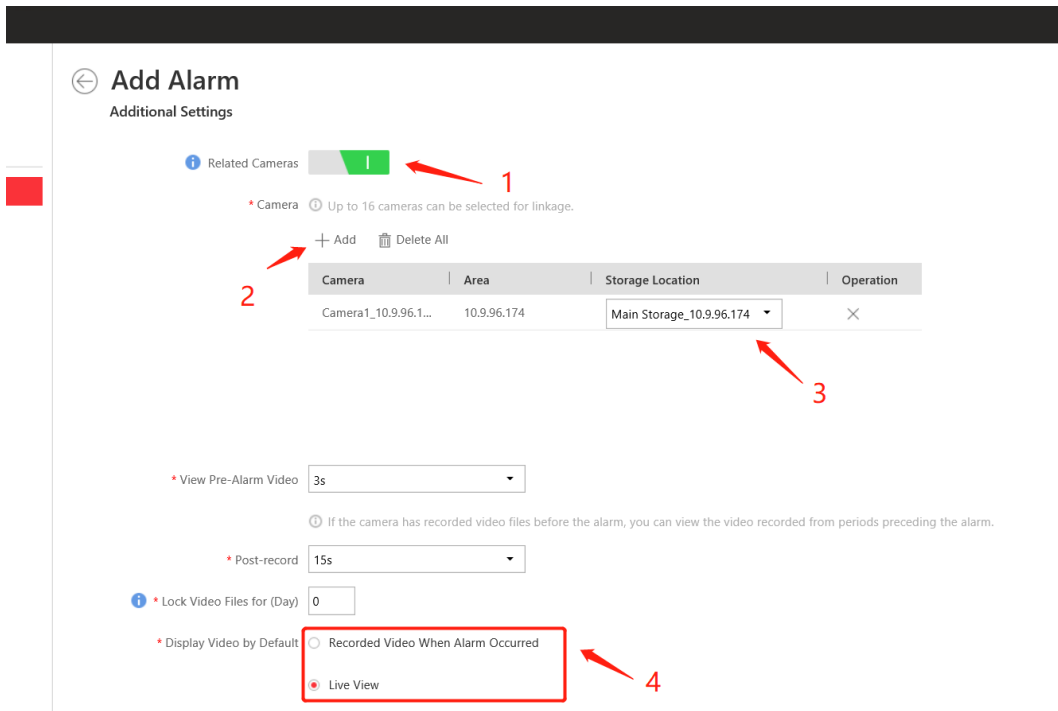
## 4. Configure Event and Alarm (Pop-Up) .

1. Choose Event & Alarm.
2. Choose Alarm, Click +Add.
3. Choose **Alarm Input**----**Alarm Input**----**Device**----**SubSystem1**.



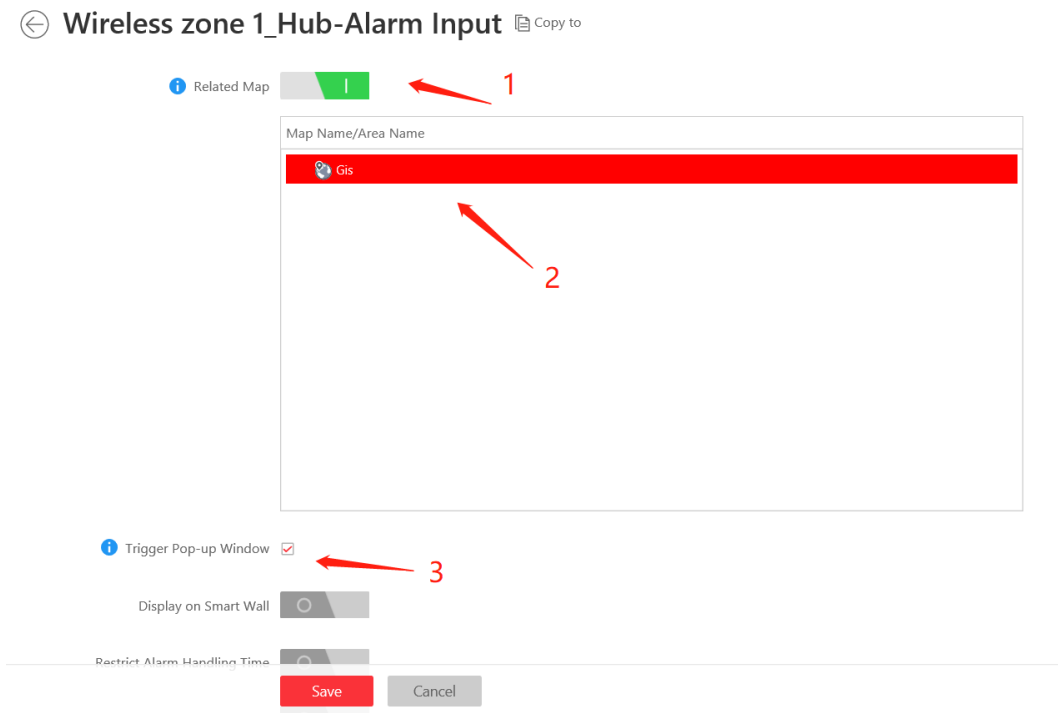
4. Choose **Related Cameras**----- **Device Camera**----**Configure Storage Location**
5. For Display Video type you can choose **Recorded Video** or **Live View**.

<b>Title:</b>	DS-PWA32 How to Configure Wireless Control Panel in HikCentral	<b>Version:</b>	v1.0	<b>Date:</b>	04/10/2019
<b>Product:</b>	AX Series Wireless Security Control Panel			<b>Page:</b>	6 of 9



6. Click **Related Map**-----choose Map.

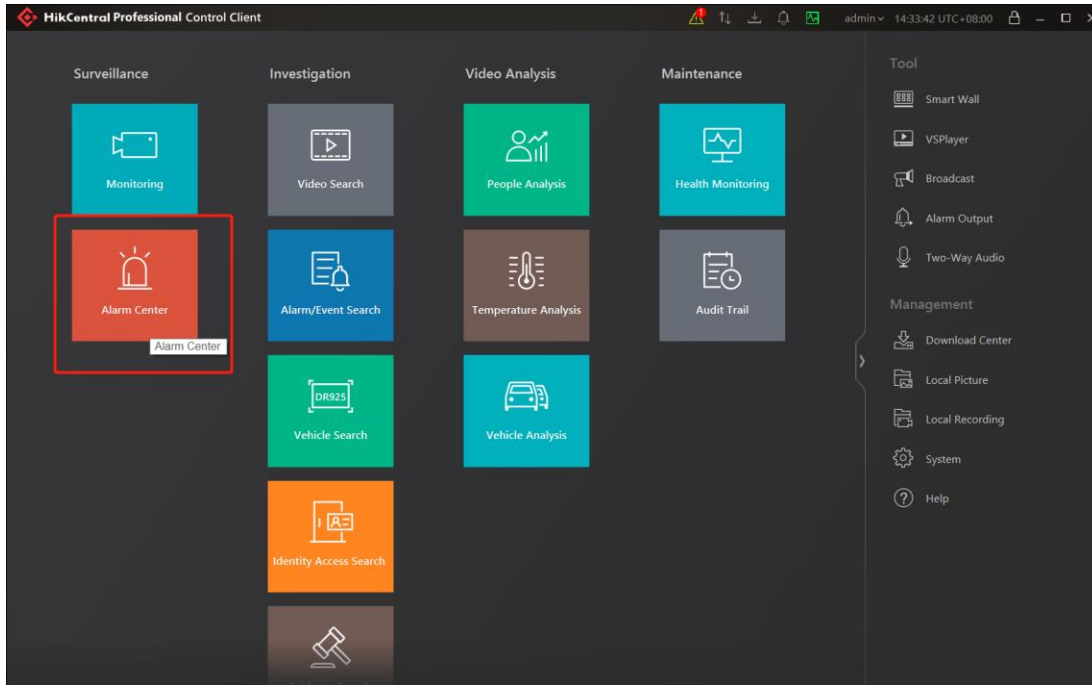
7. Click **Trigger Pop-up Window**.



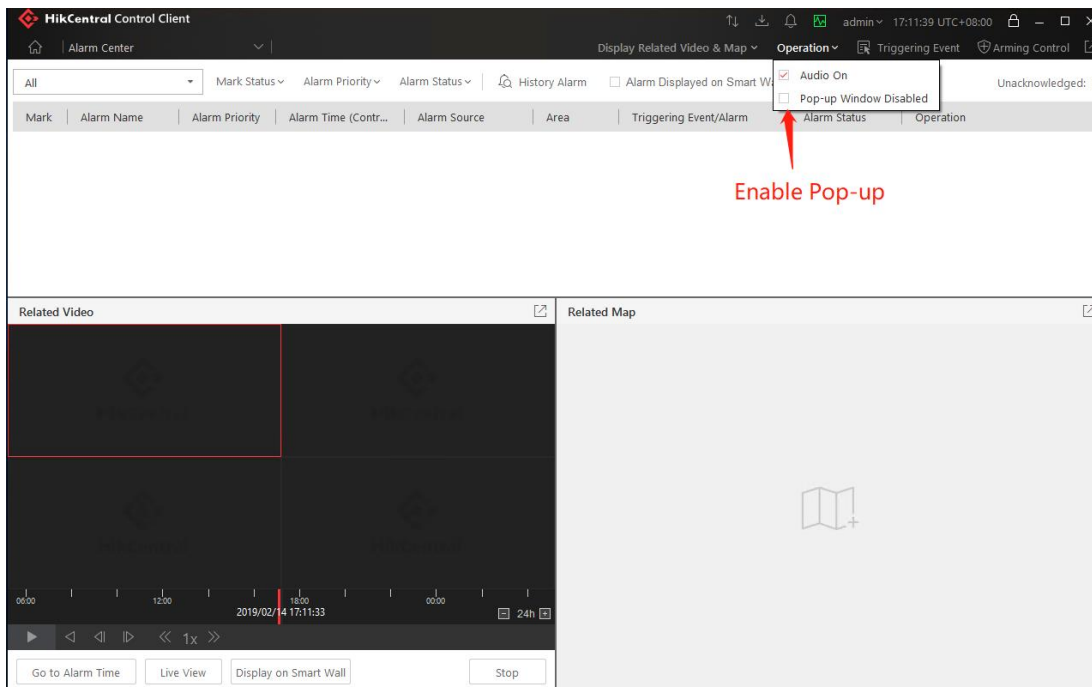
<b>Title:</b>	DS-PWA32 How to Configure Wireless Control Panel in HikCentral	<b>Version:</b>	v1.0	<b>Date:</b>	04/10/2019
<b>Product:</b>	AX Series Wireless Security Control Panel			<b>Page:</b>	7 of 9

## 5. Configure HikCentral Client.

### 1. Choose Alarm Center.



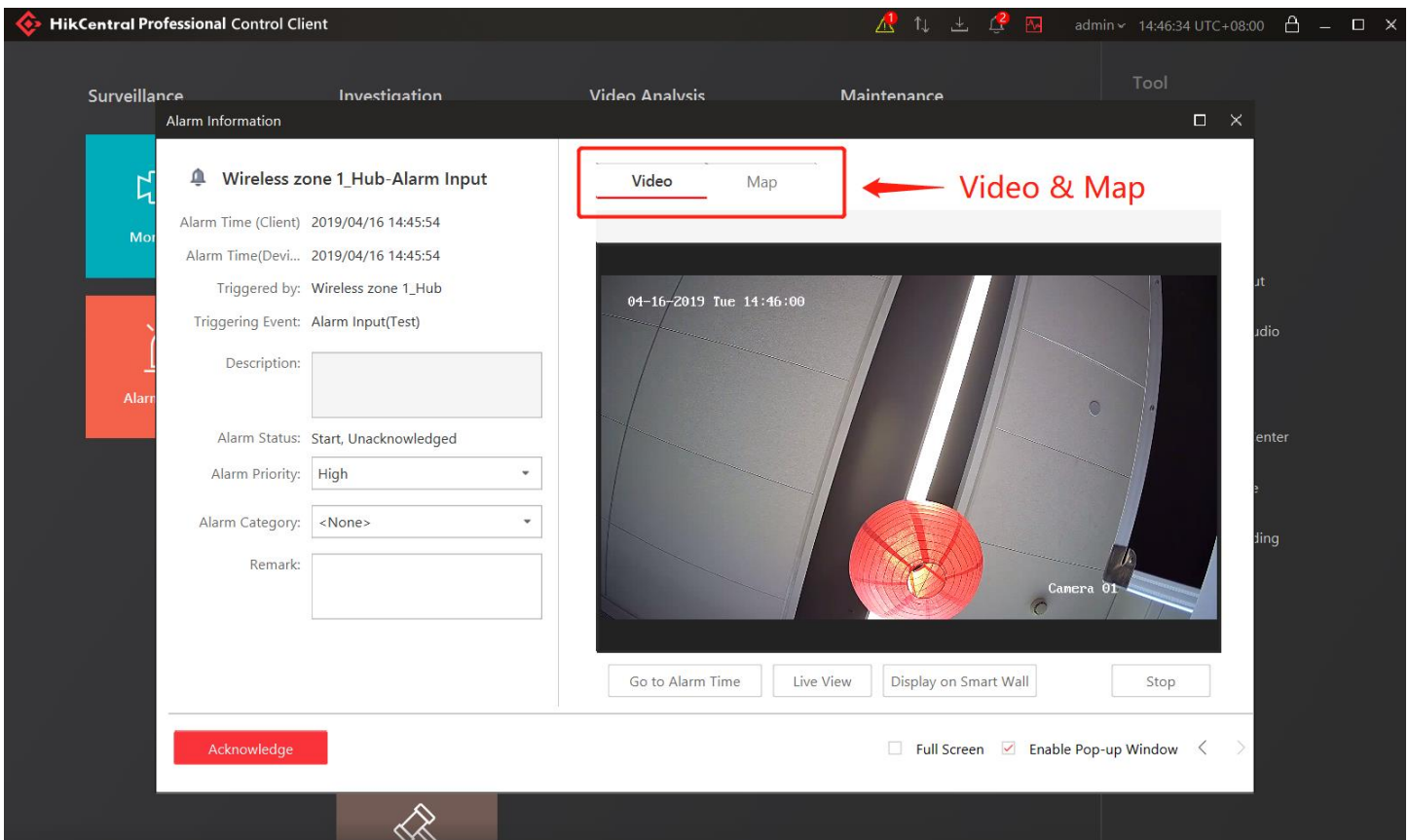
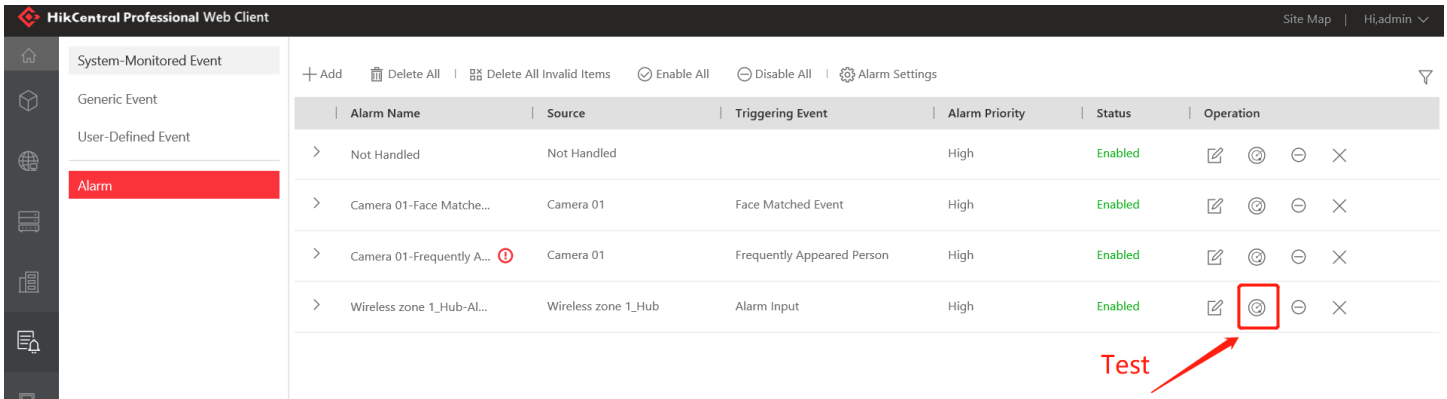
### 2. Enable Pop-up Window.



<b>Title:</b>	DS-PWA32 How to Configure Wireless Control Panel in HikCentral	<b>Version:</b>	v1.0	<b>Date:</b>	04/10/2019
<b>Product:</b>	AX Series Wireless Security Control Panel			<b>Page:</b>	8 of 9

## 6. Test Pop up.

1. Test Trigger Alarm by HikCentral Website.
2. You can see the HikCentral Client pop-up window (Include Video and Map).

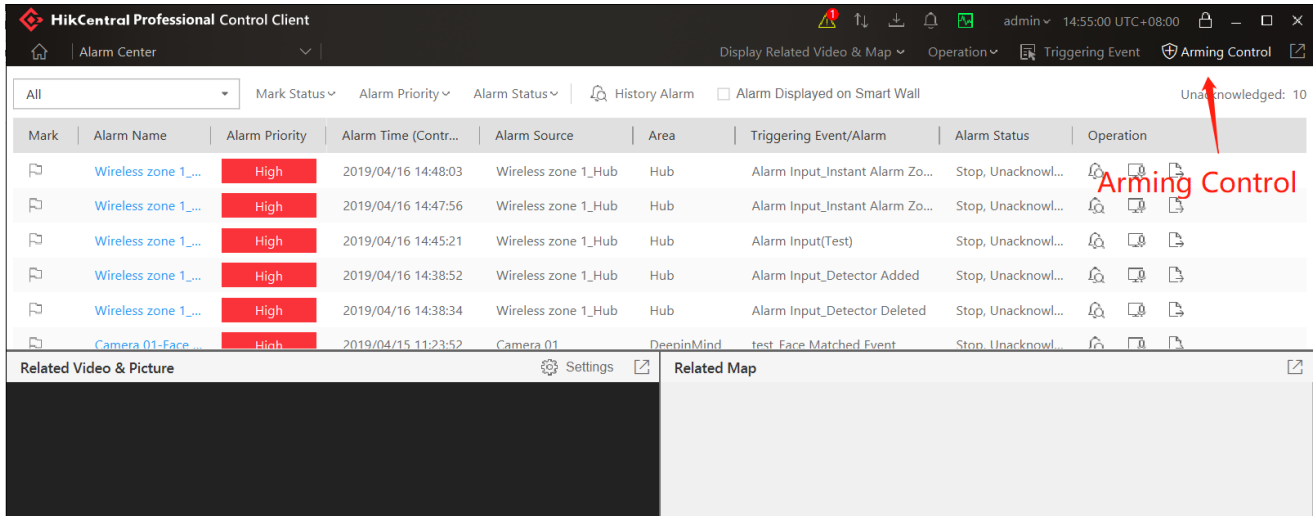




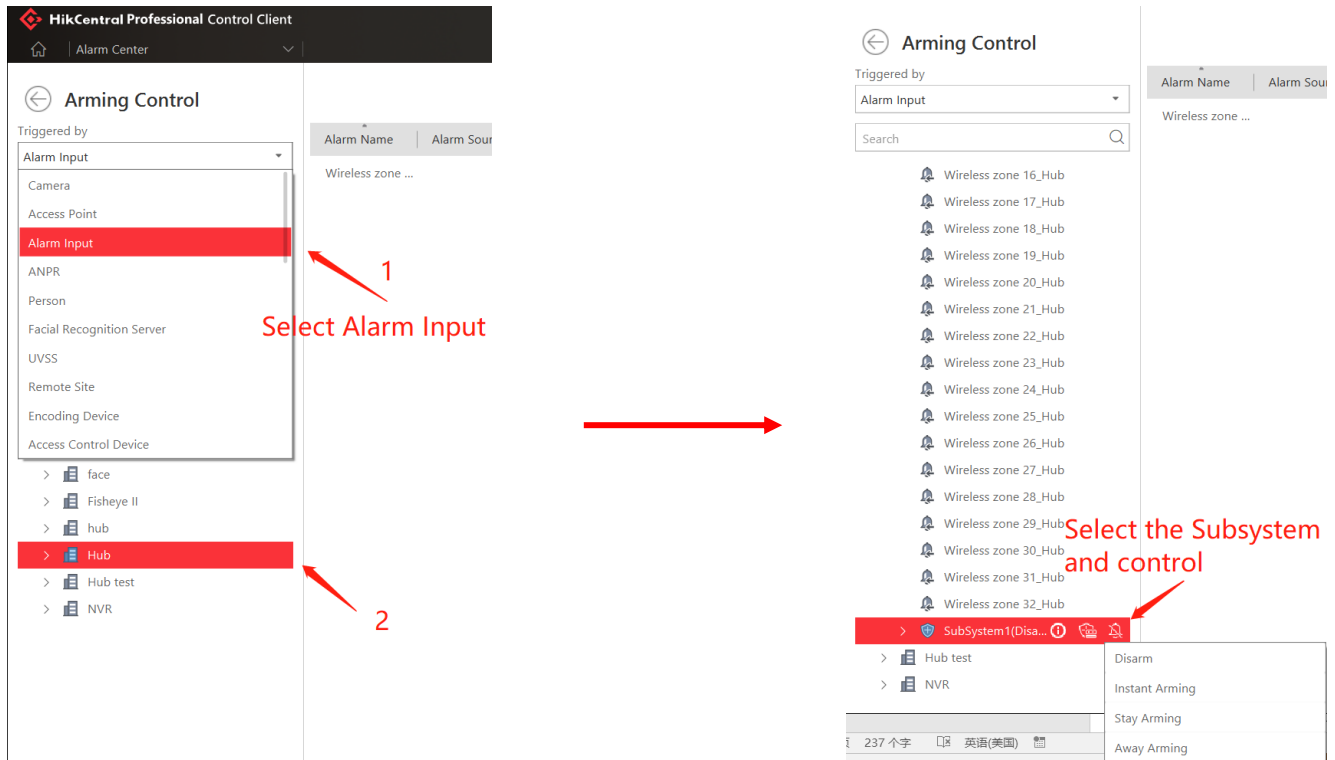
<b>Title:</b>	DS-PWA32 How to Configure Wireless Control Panel in HikCentral	<b>Version:</b>	v1.0	<b>Date:</b>	04/10/2019
<b>Product:</b>	AX Series Wireless Security Control Panel			<b>Page:</b>	9 of 9

## 7. Control the System.

### 1. Click the Arming Control.



### 2. Select Triggered by---Alarm Input, then click the Device



### 3. Select the subsystem and control(Disarm\Instant Arming\Stay Arming\Away Arming)



<b>Title:</b>	DS-PWA32 How to Configure Wireless Control Panel in HikCentral	<b>Version:</b>	v1.0	<b>Date:</b>	04/10/2019
<b>Product:</b>	AX Series Wireless Security Control Panel			<b>Page:</b>	10 of 9

**First Choice for Security Professionals**  
**HIKVISION Technical Support**