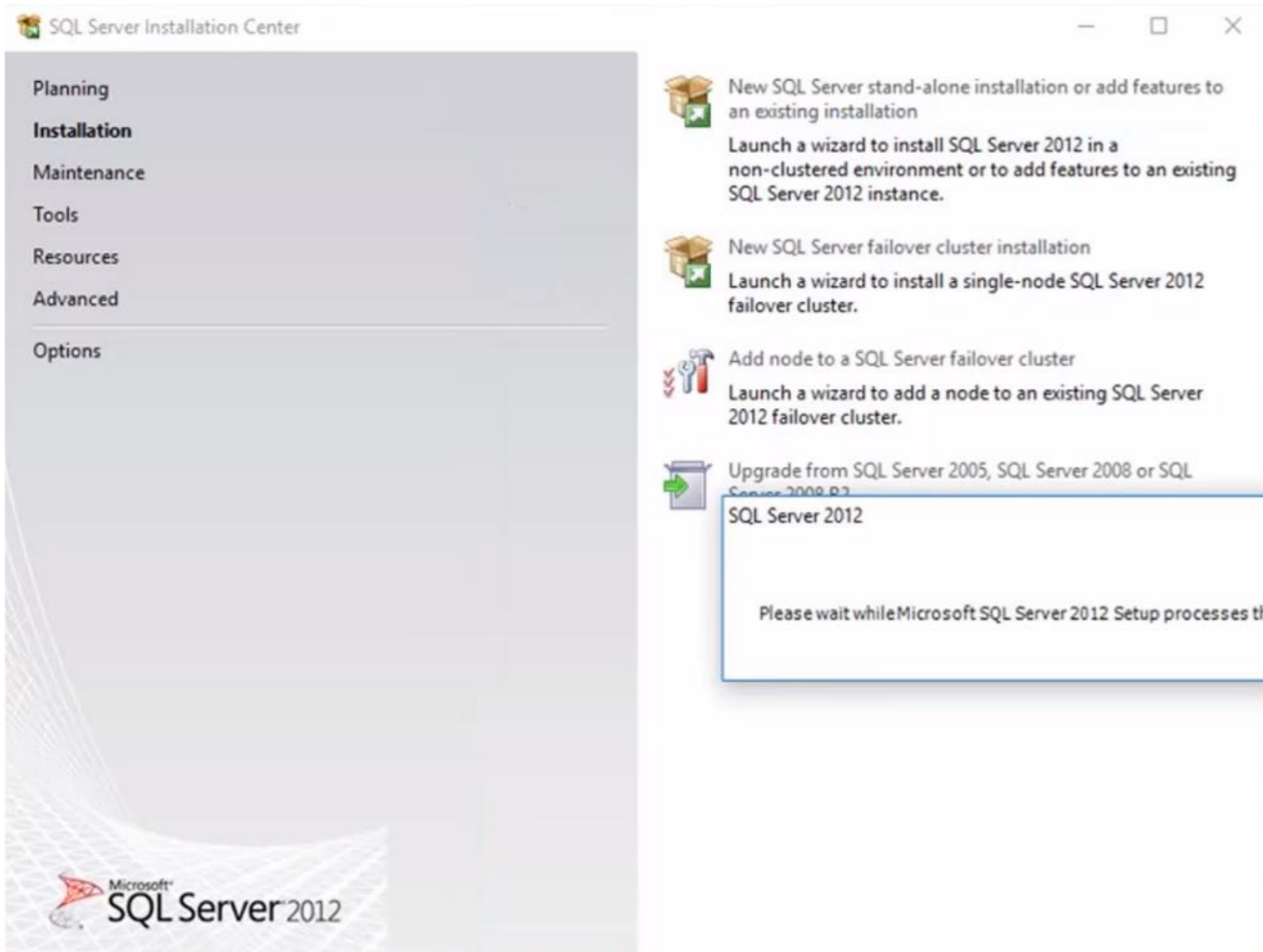


SQL Server Installation and Configuration



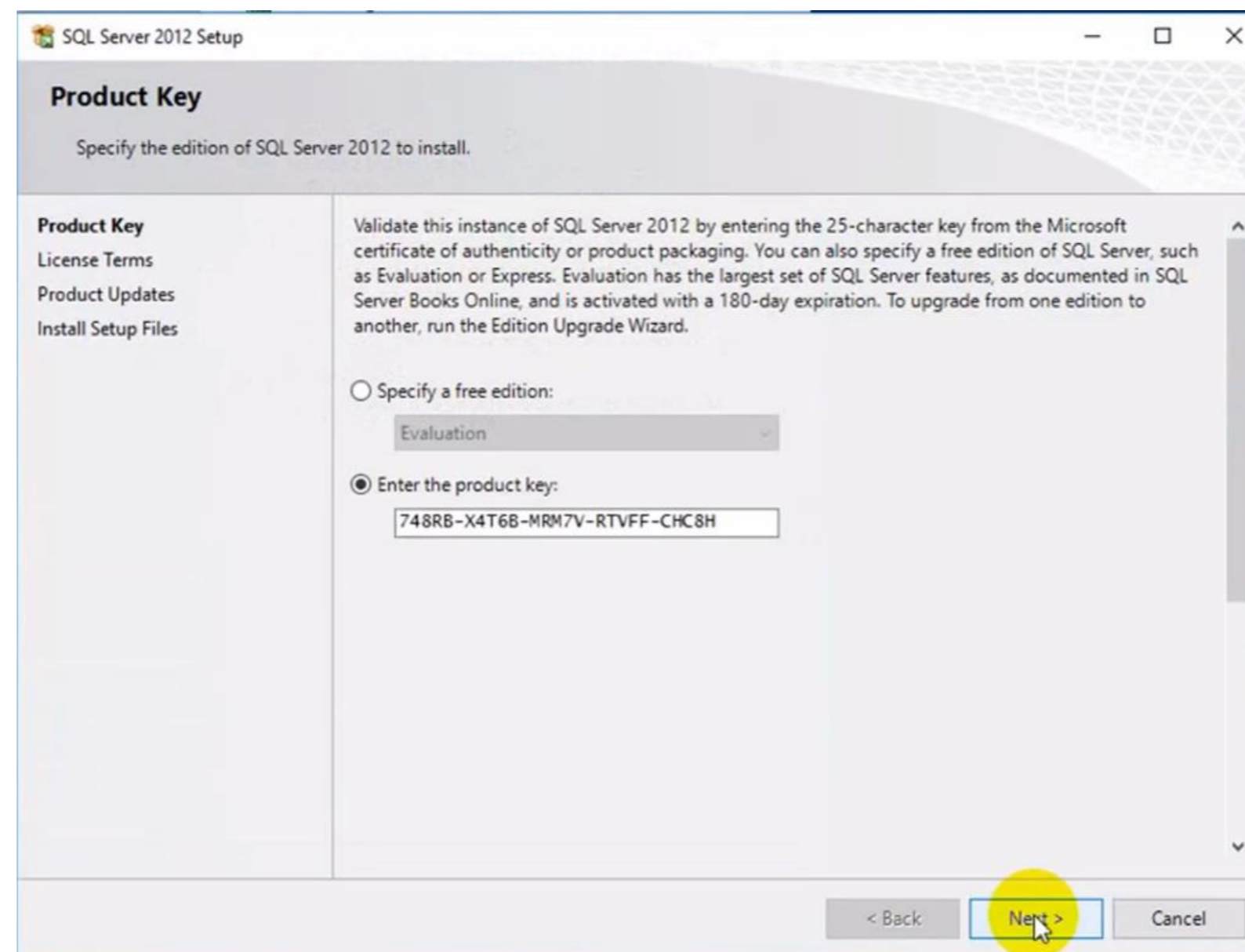
SQL Server is a relational database management system introduced by Microsoft Corporation. It is easy to use and scalable, and has a high degree of integration with related software. It can be used across multiple platforms, from laptops running Microsoft Windows 98 to large multi-processor servers running Microsoft Windows Server 2012.

SQL Server Installation



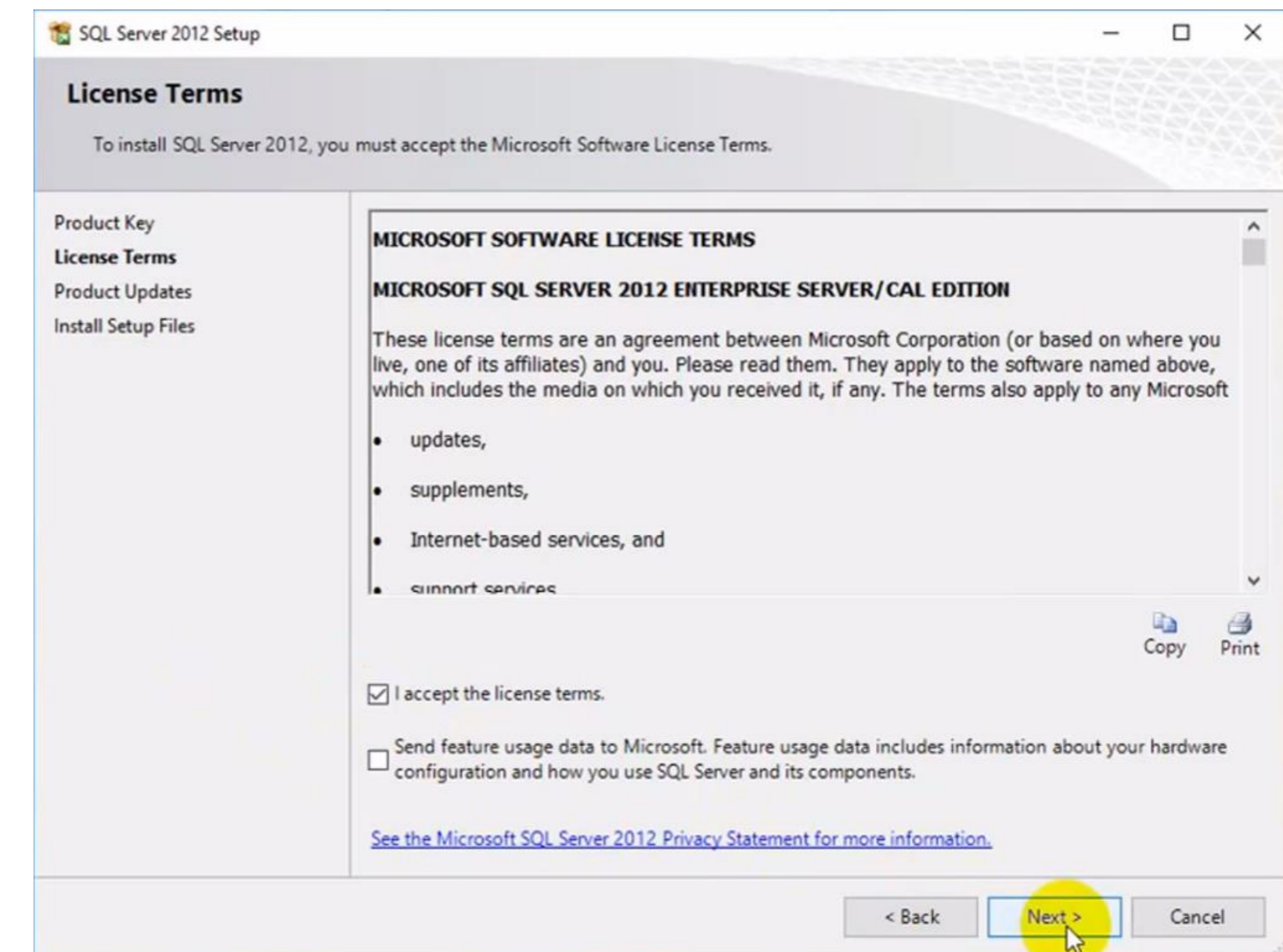
1. Installation

Click on the first item on the right "New SQL Server Standalone Installation or Add Features to an Existing Installation"



2. Product Key

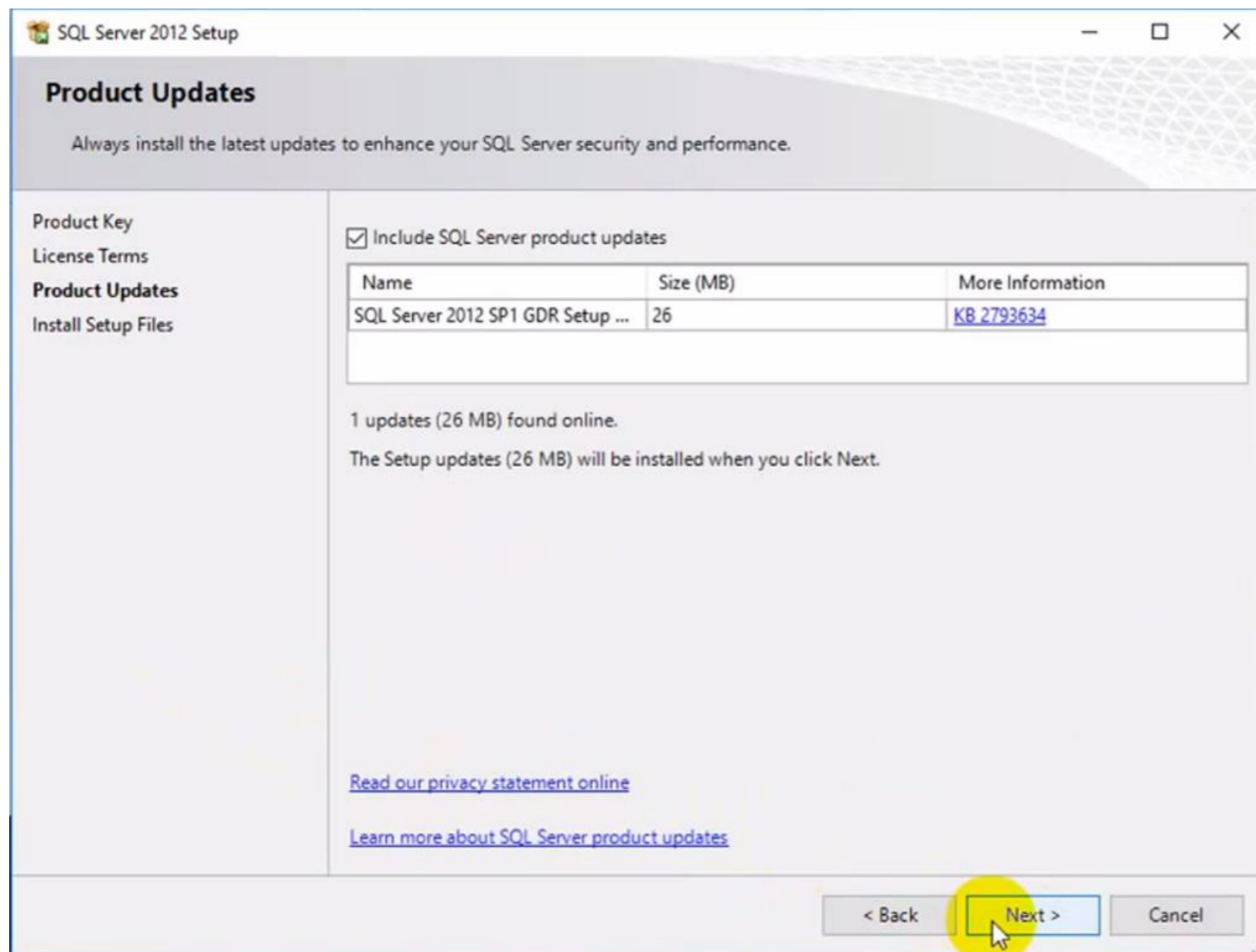
If you purchased a licensed version, click on Enter the product key. If you choose to install a specific version then click on "Specify Available Versions". If you do not want to install an incomplete version and download it from the Internet, then Try it out (with a 180-day trial key)



3. License Terms

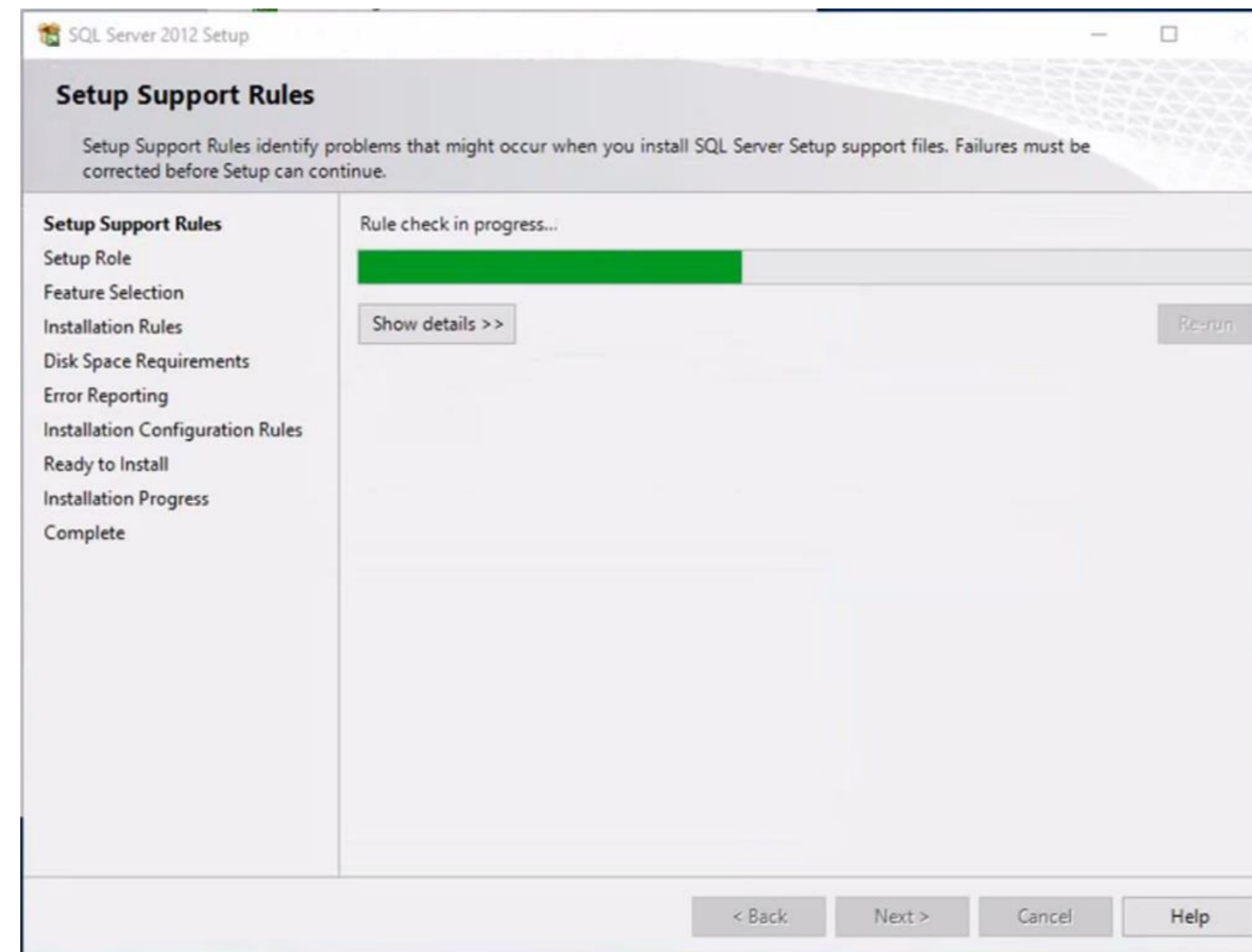
Check "I accept the license terms" and click Next

SQL Server Installation

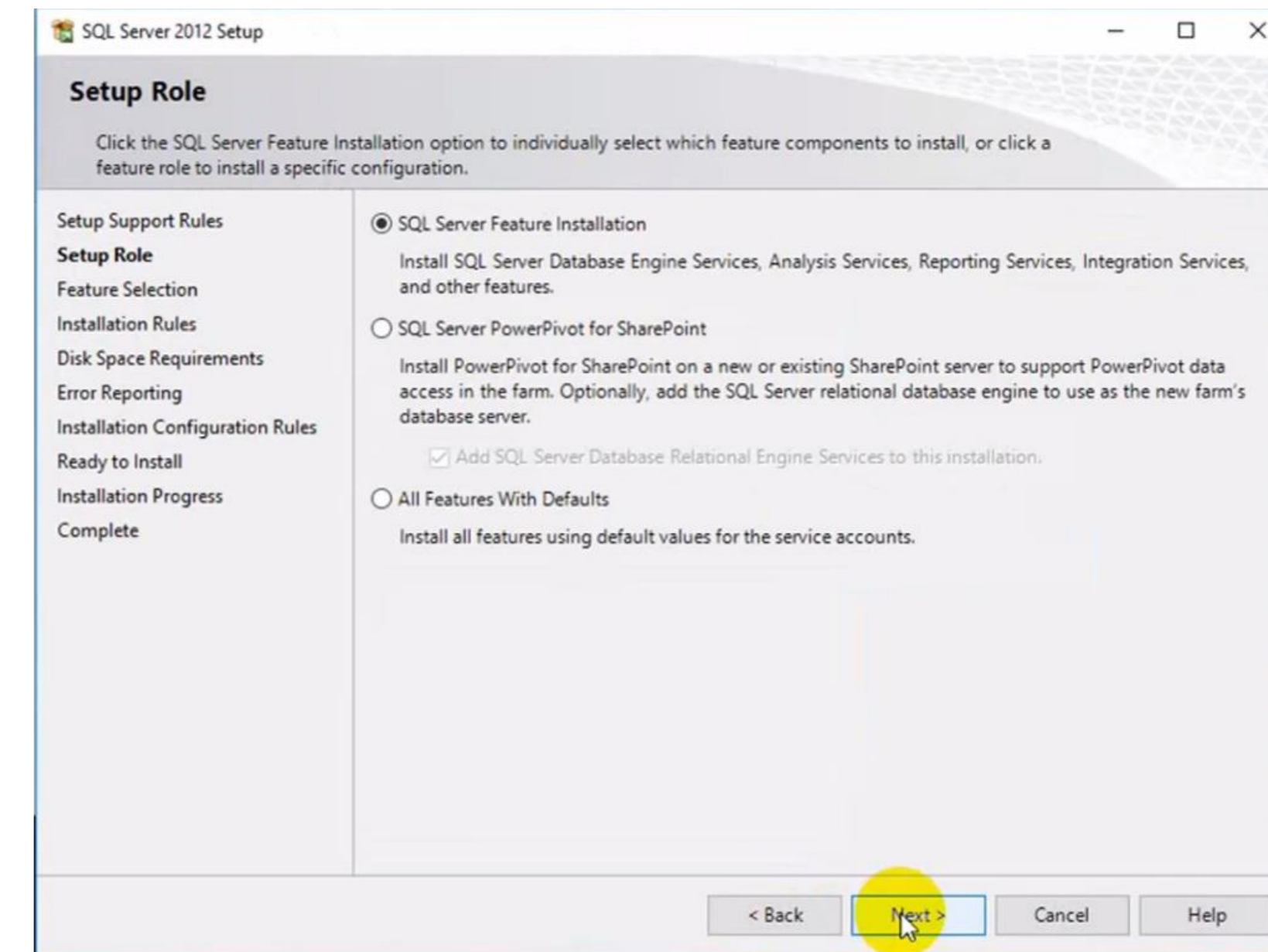


4. Product Update

It is recommended to install in the case of networking, query for updateable patches.



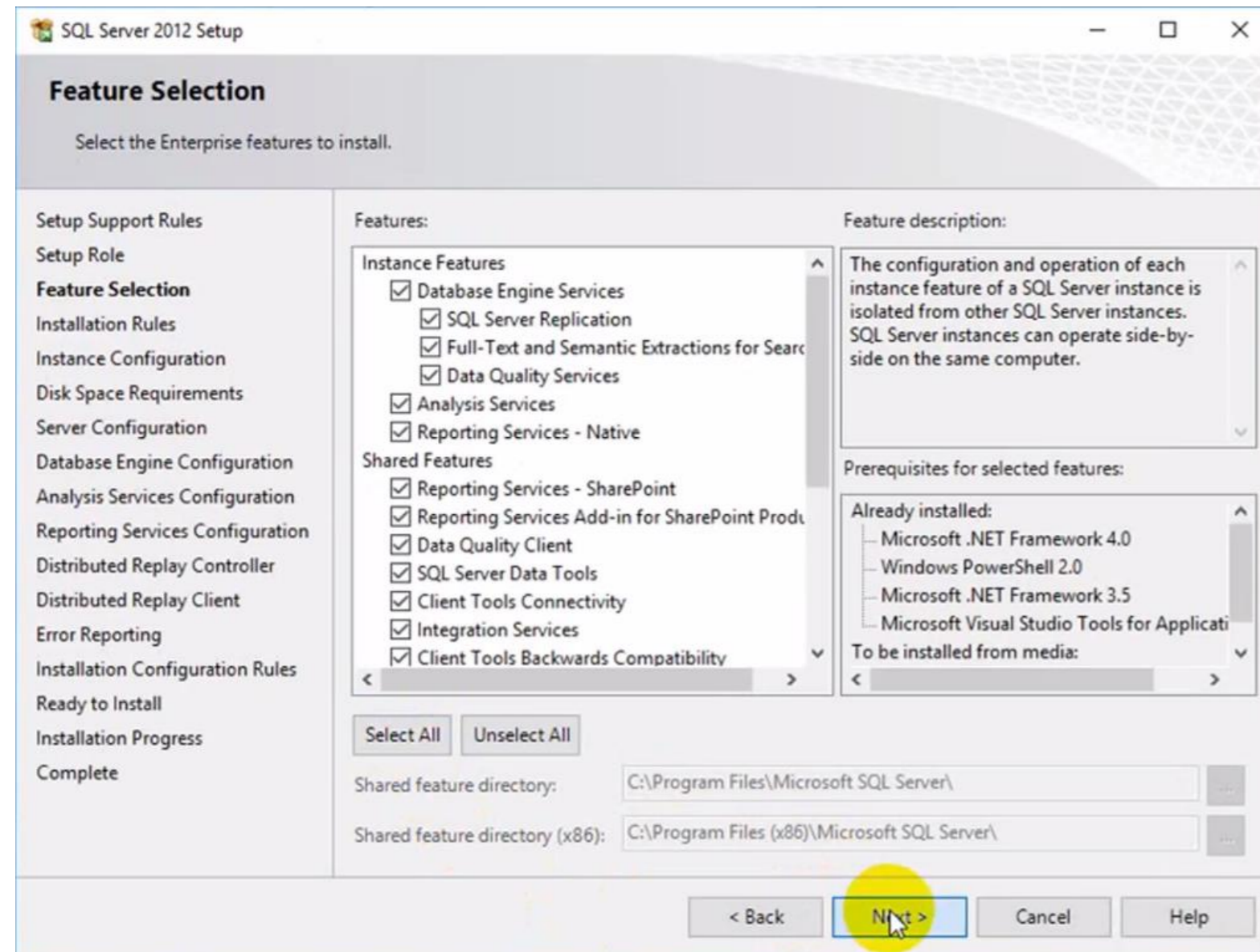
5. Setup Support Rules



6. Set Role

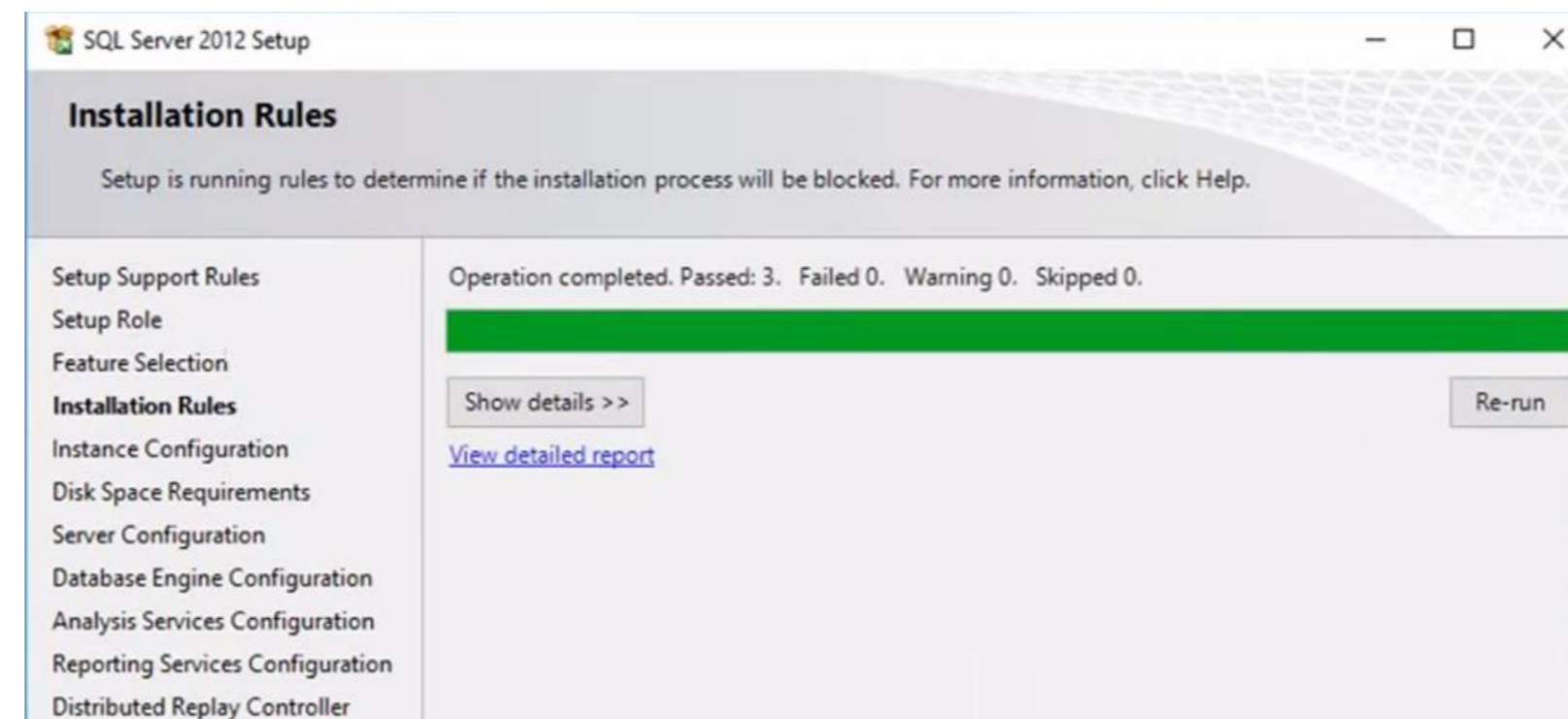
Select the SQL Server feature installation and click "Next"

SQL Server Installation

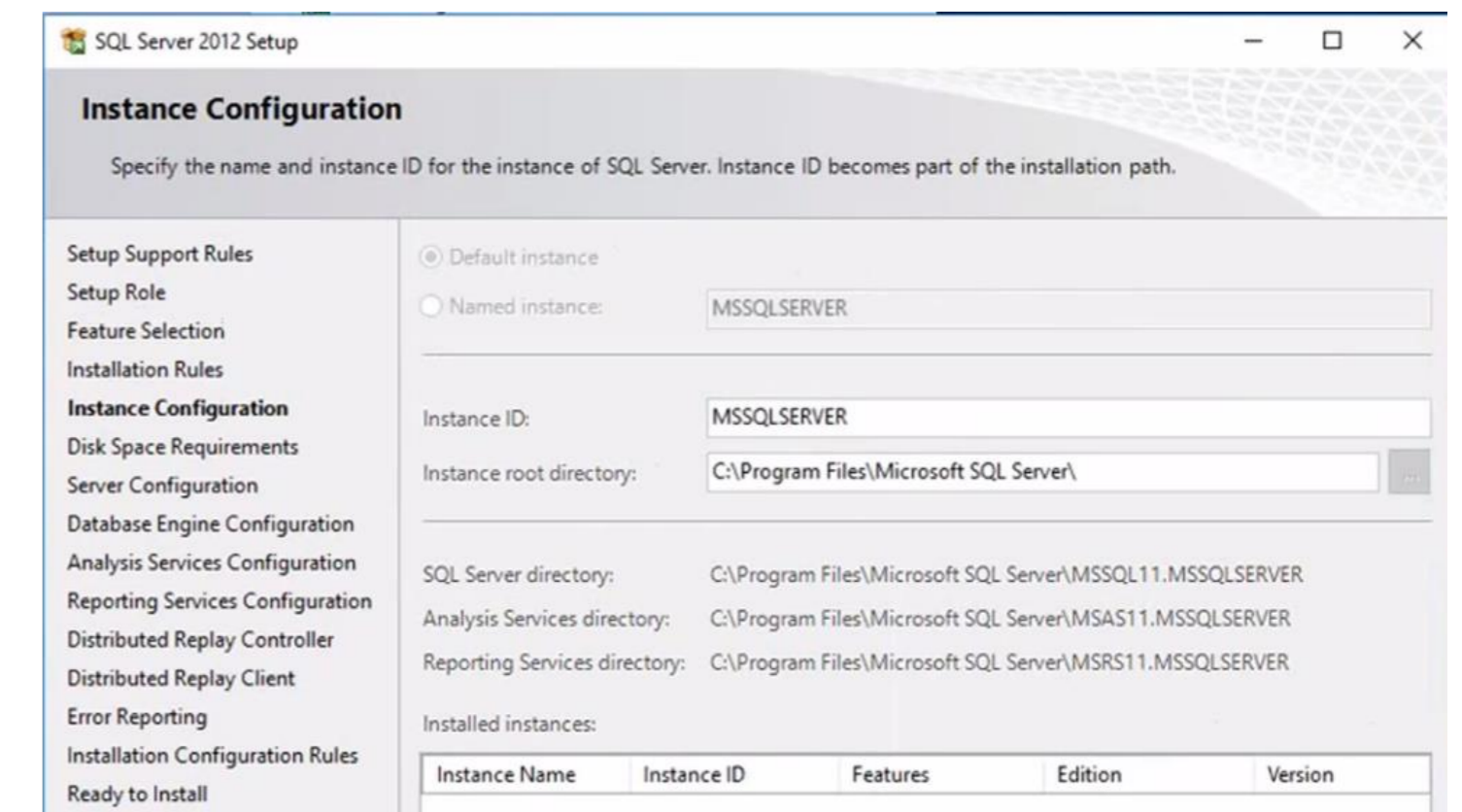


7.Feature Selection

Recommended all



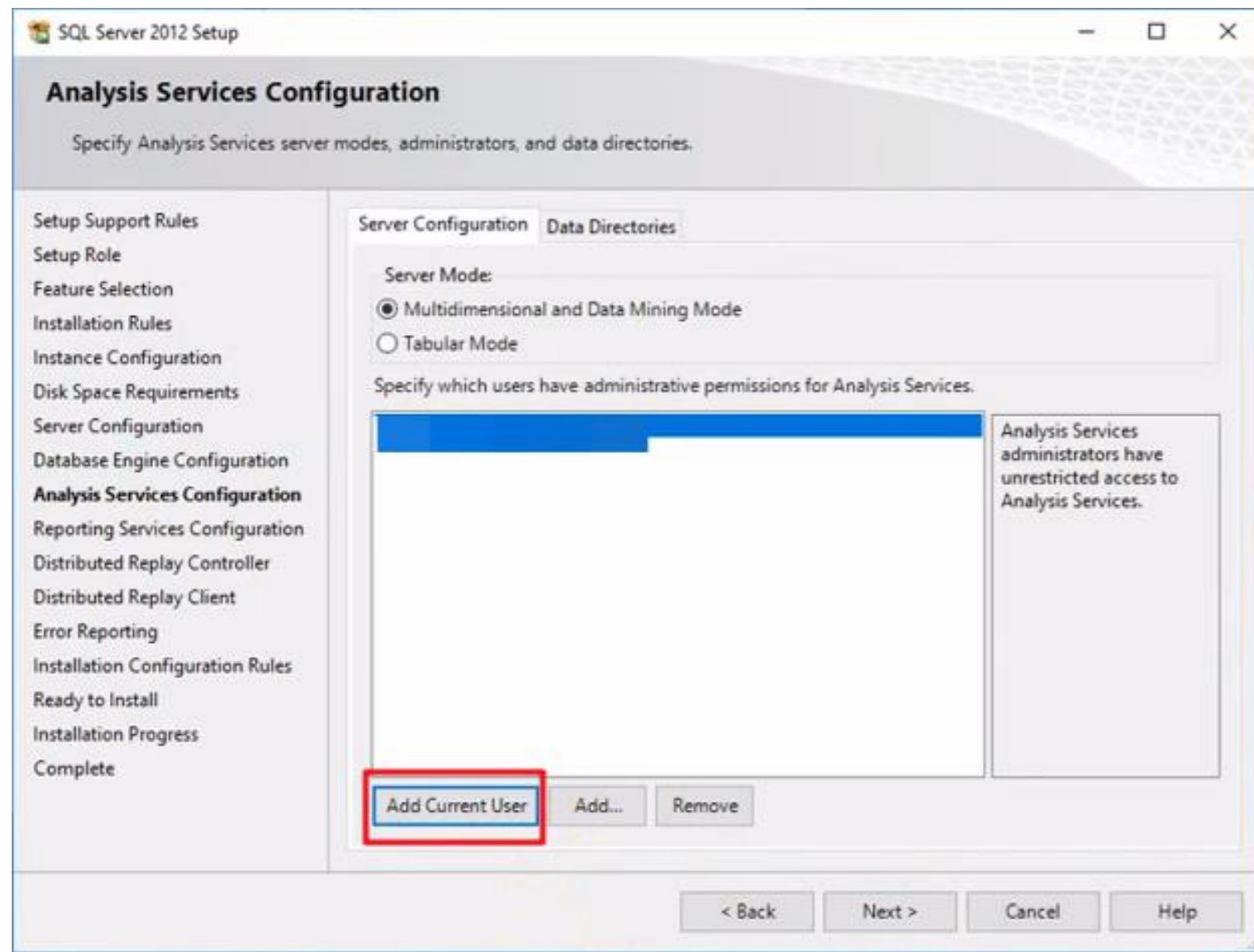
8.Installation Rules



9.Instance Configuration

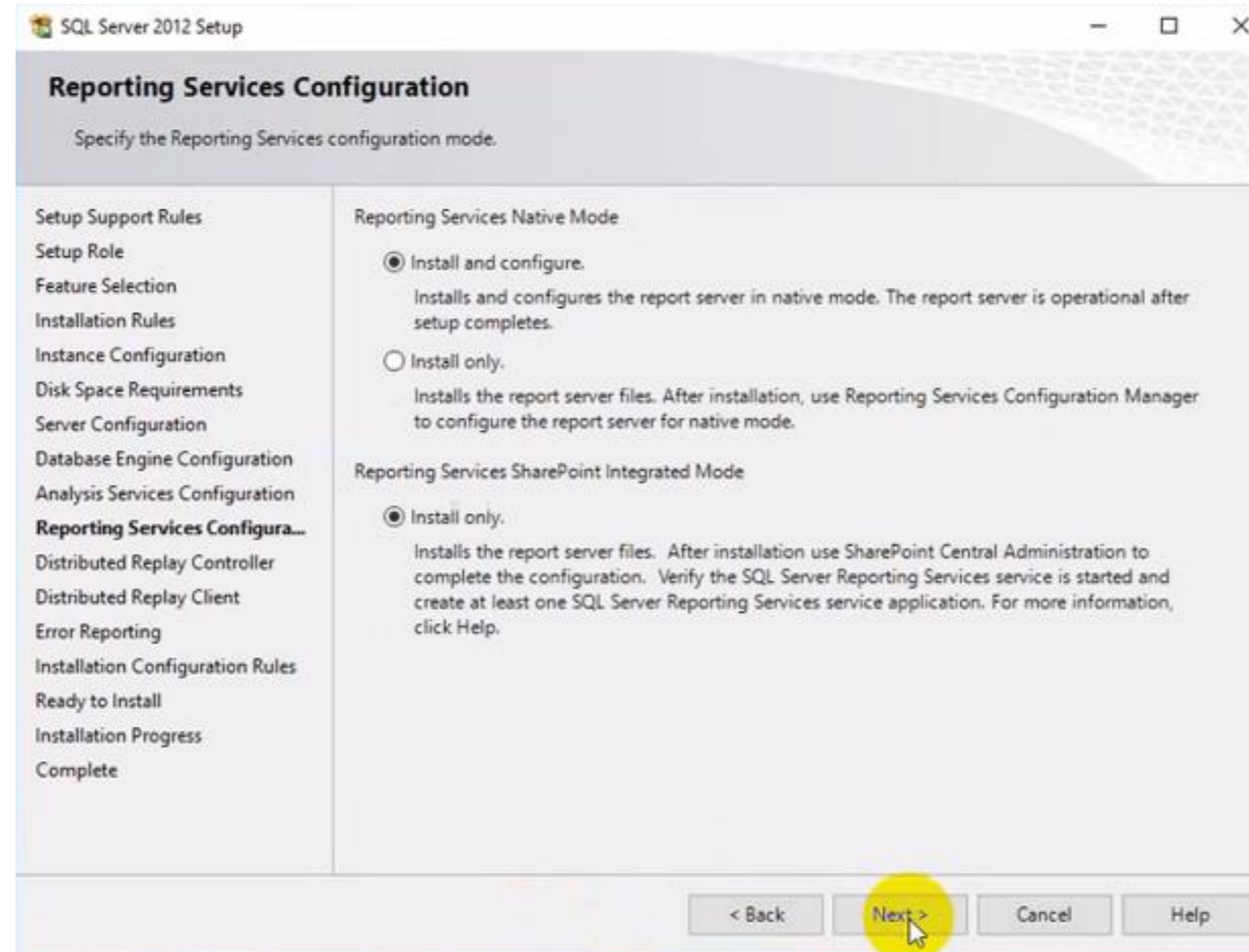
Comes with some instances, about 2.5G

SQL Server Installation

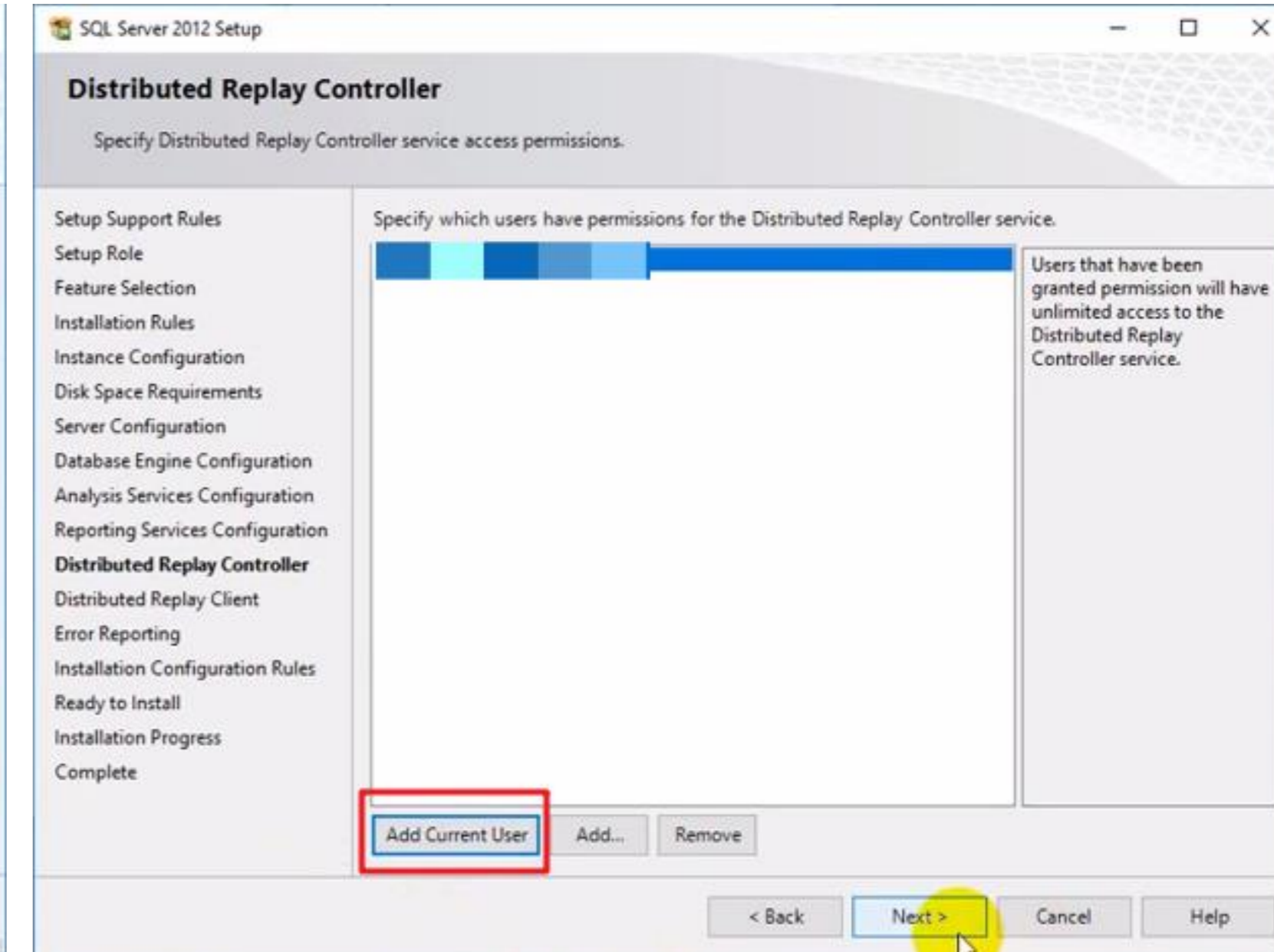


13. Analysis Service Configuration

Add current user



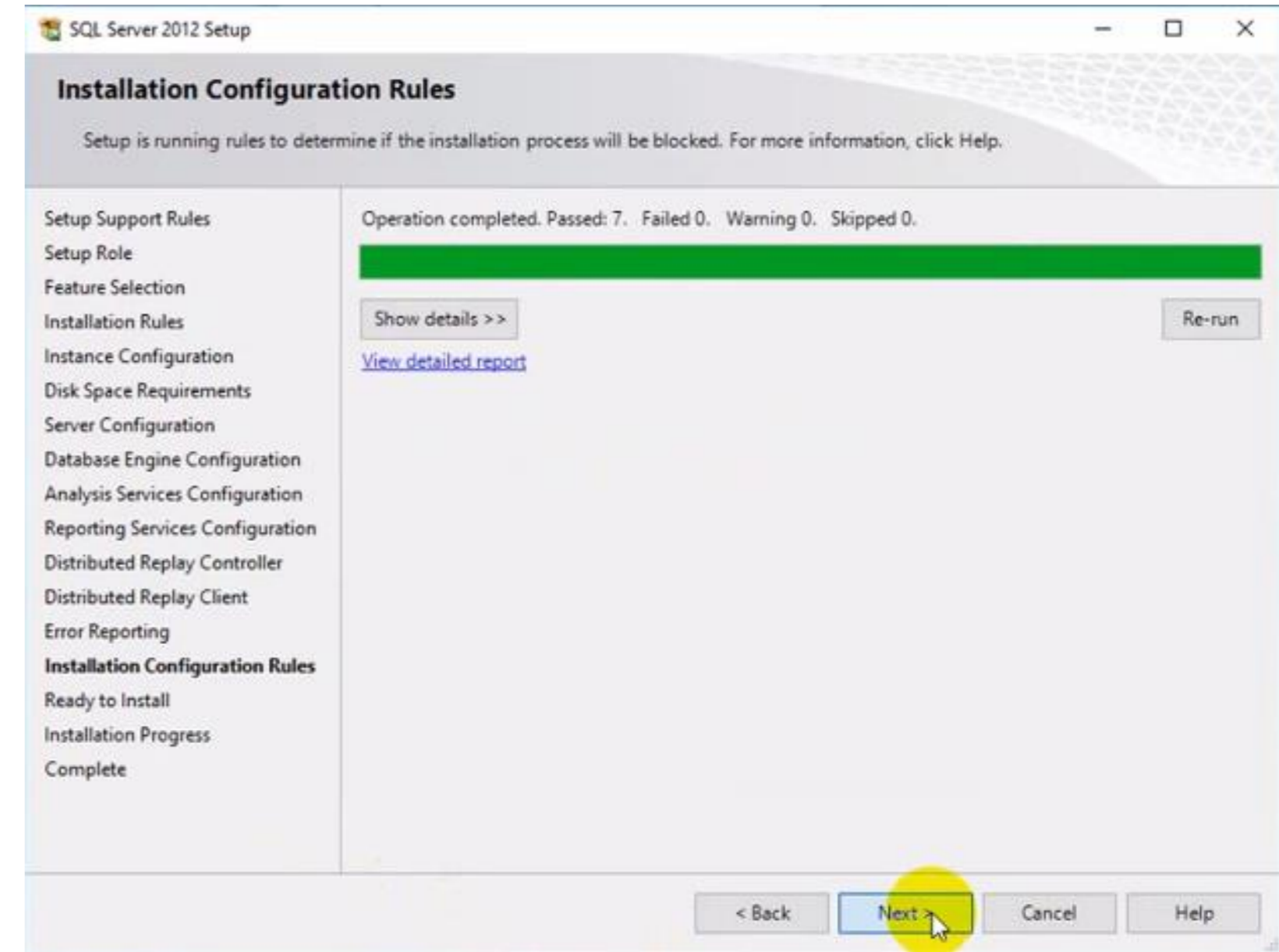
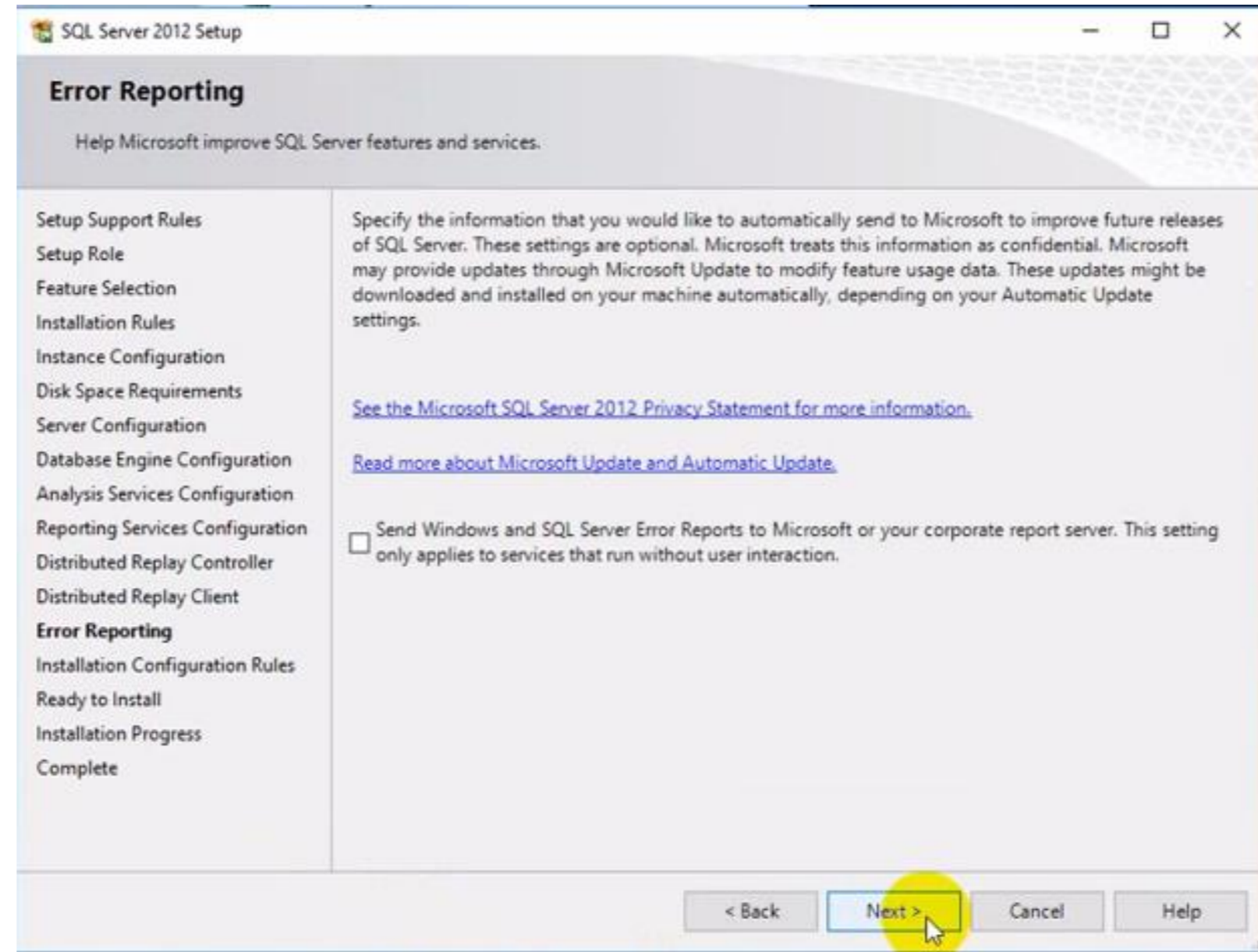
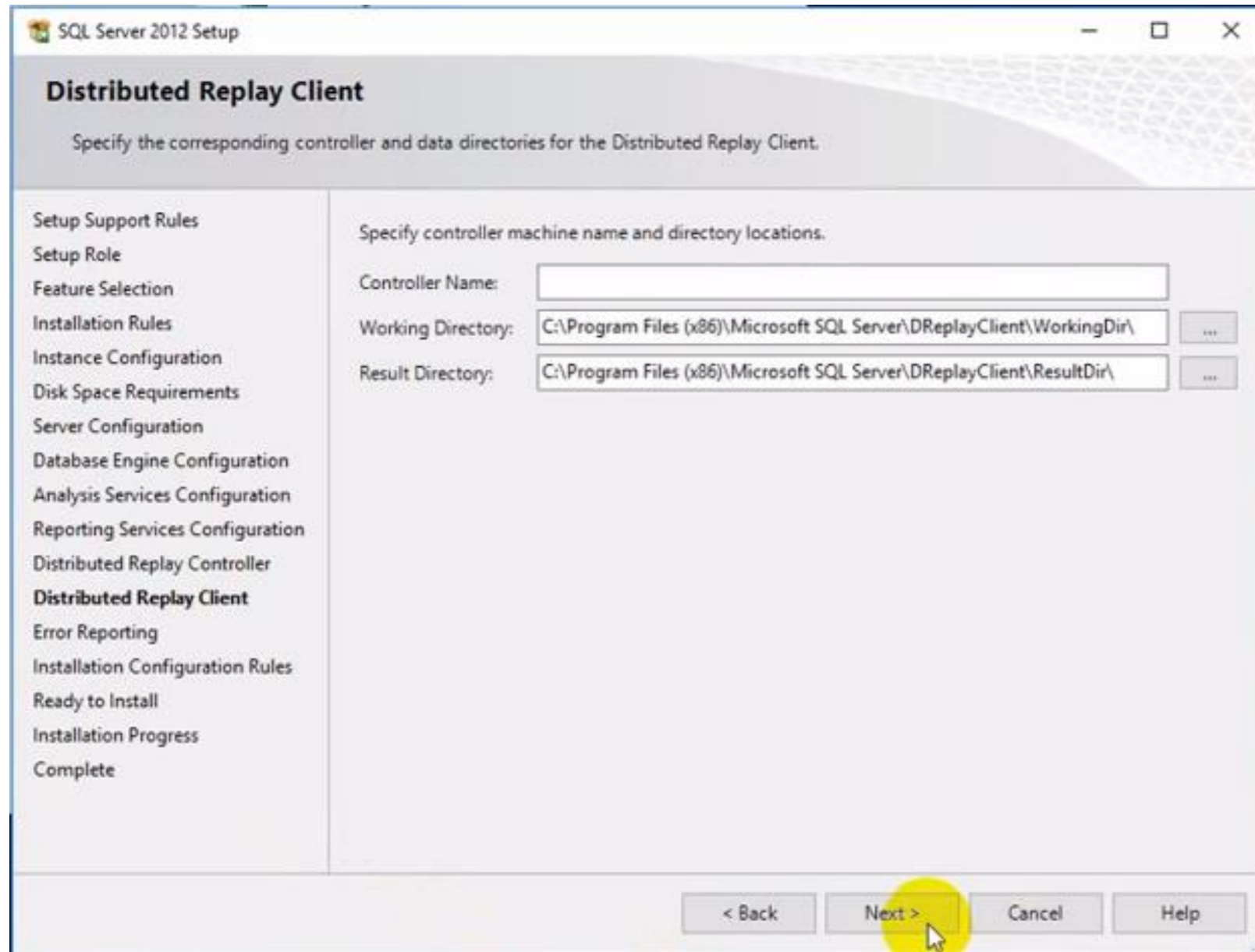
14. Reporting Services Configuration



15. Distributed replay controller

Add current user

SQL Server Installation



16. Distributed replay controller



17. Error Reporting

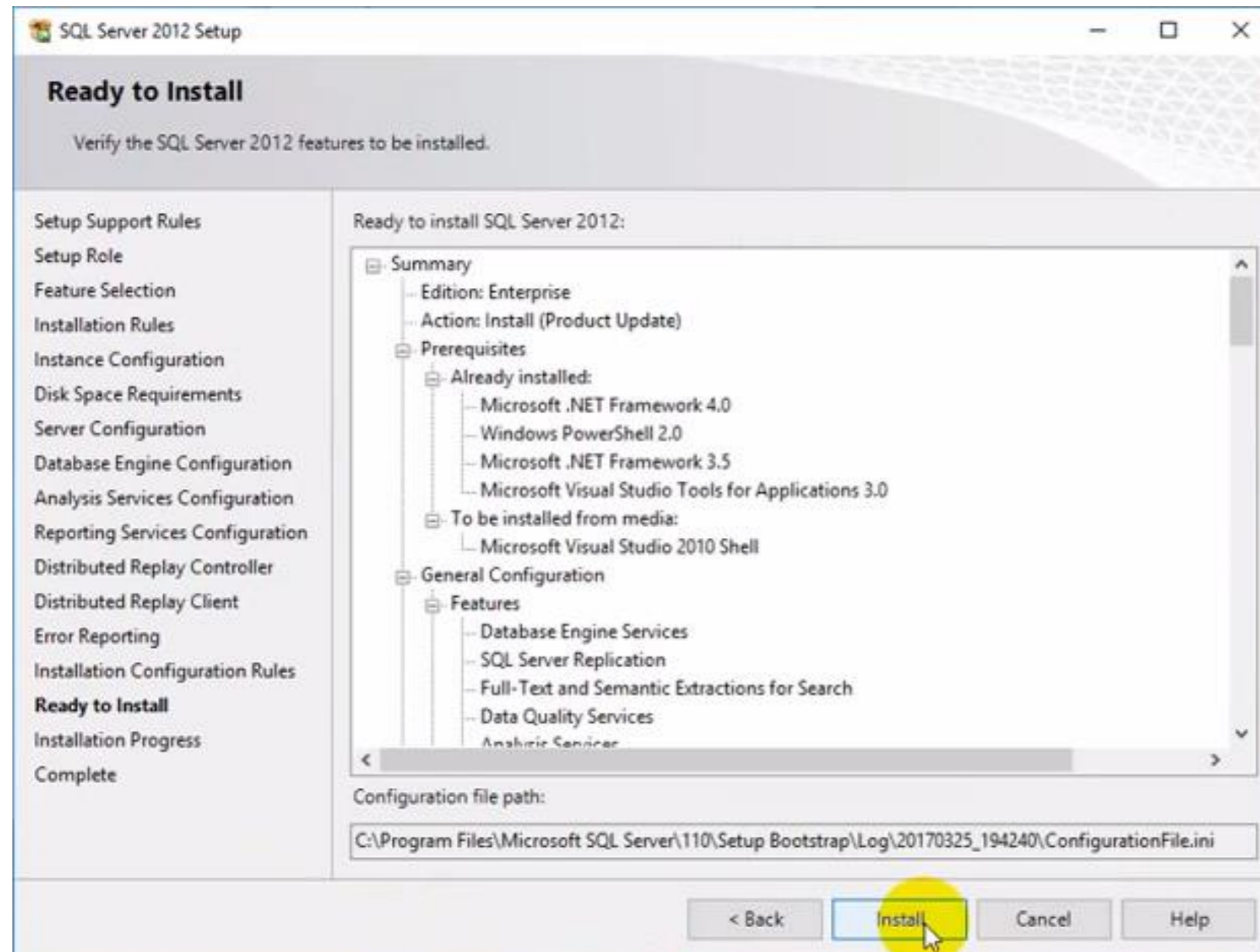


Click Next

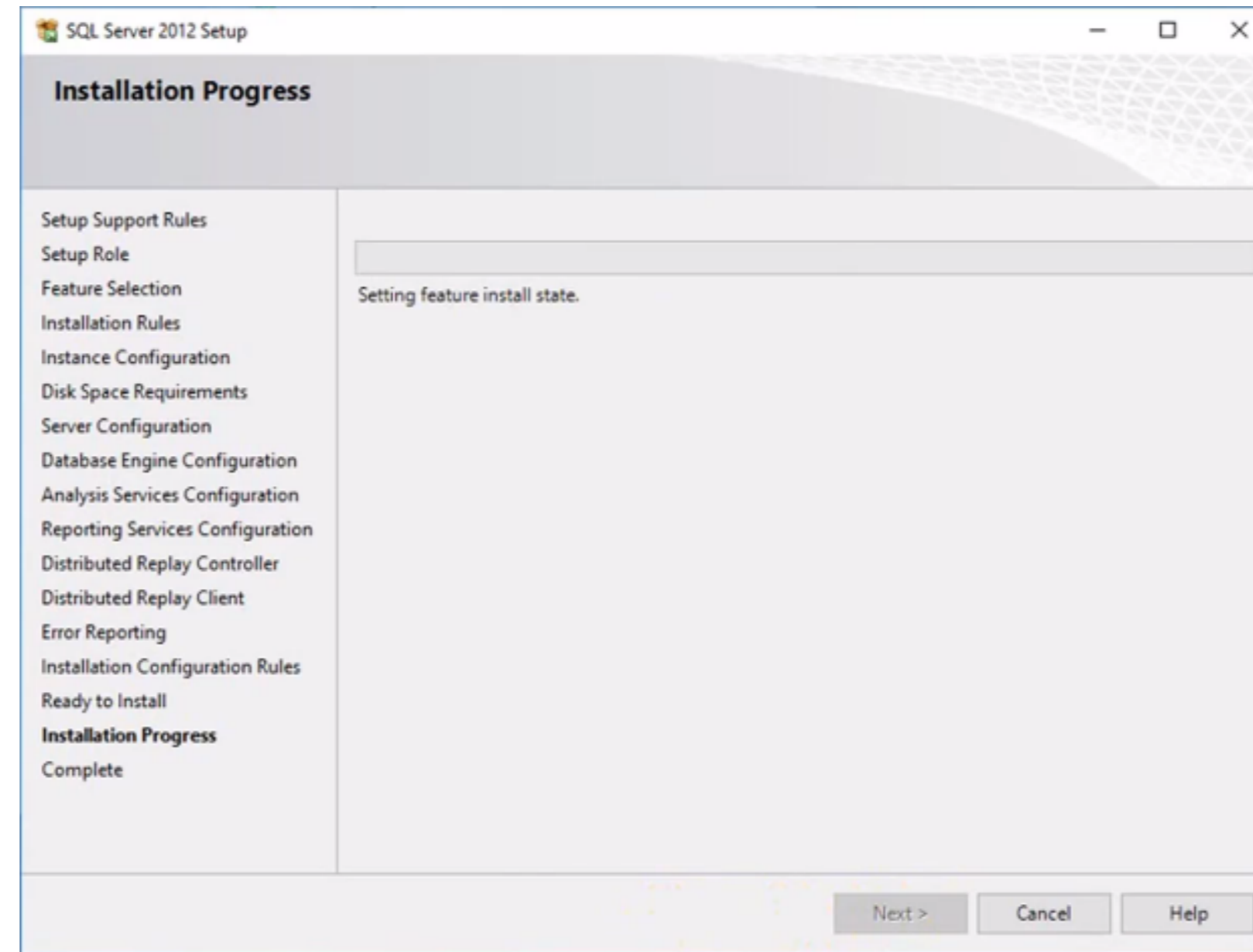
18. Installation Configuration Rules



SQL Server Installation

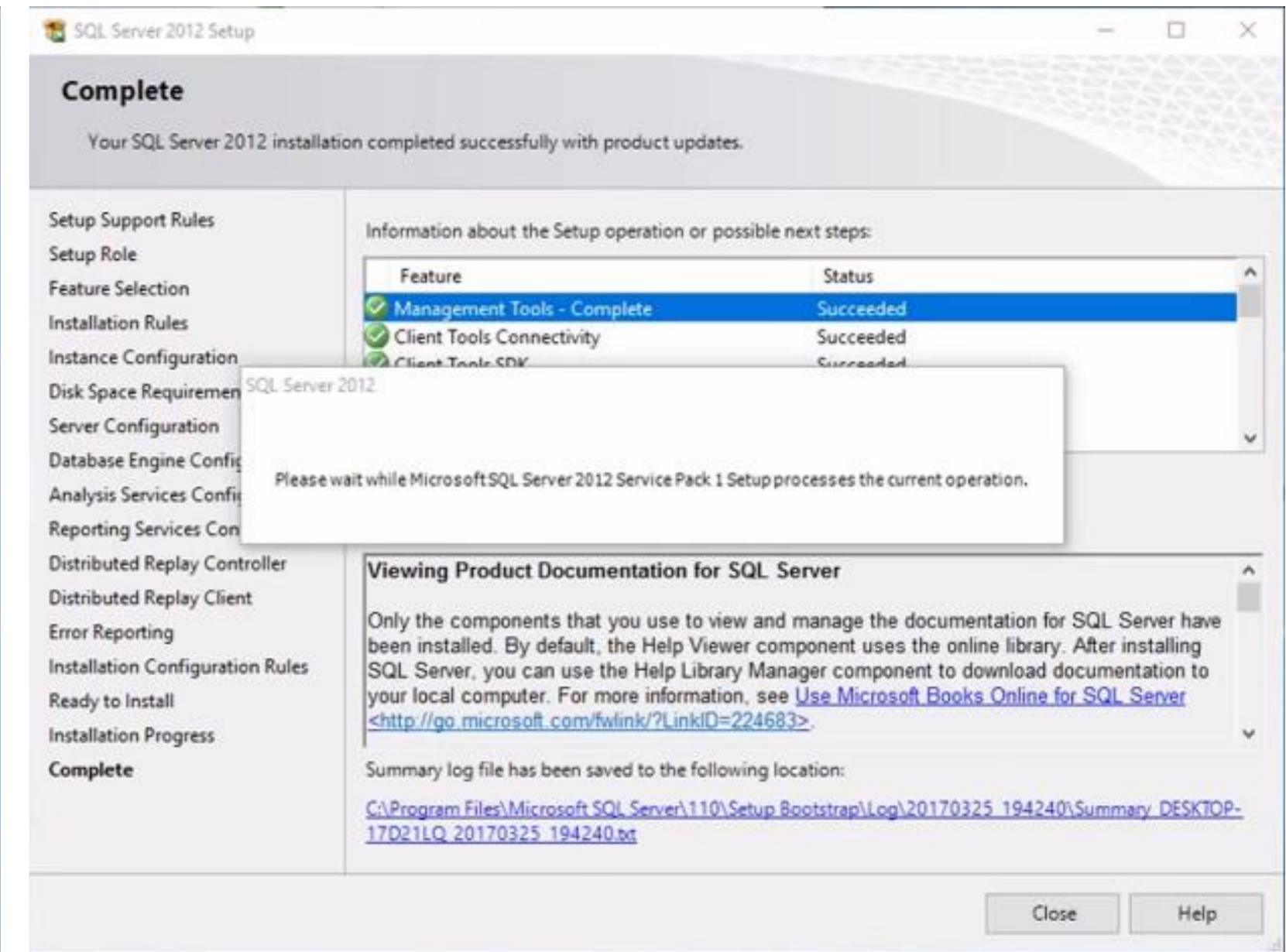


19. Ready to Install



20. Installation Progress

Start a long wait, it takes about 30-40 minutes



21. Complete

If the above interface appears, congratulations, the installation is successful.



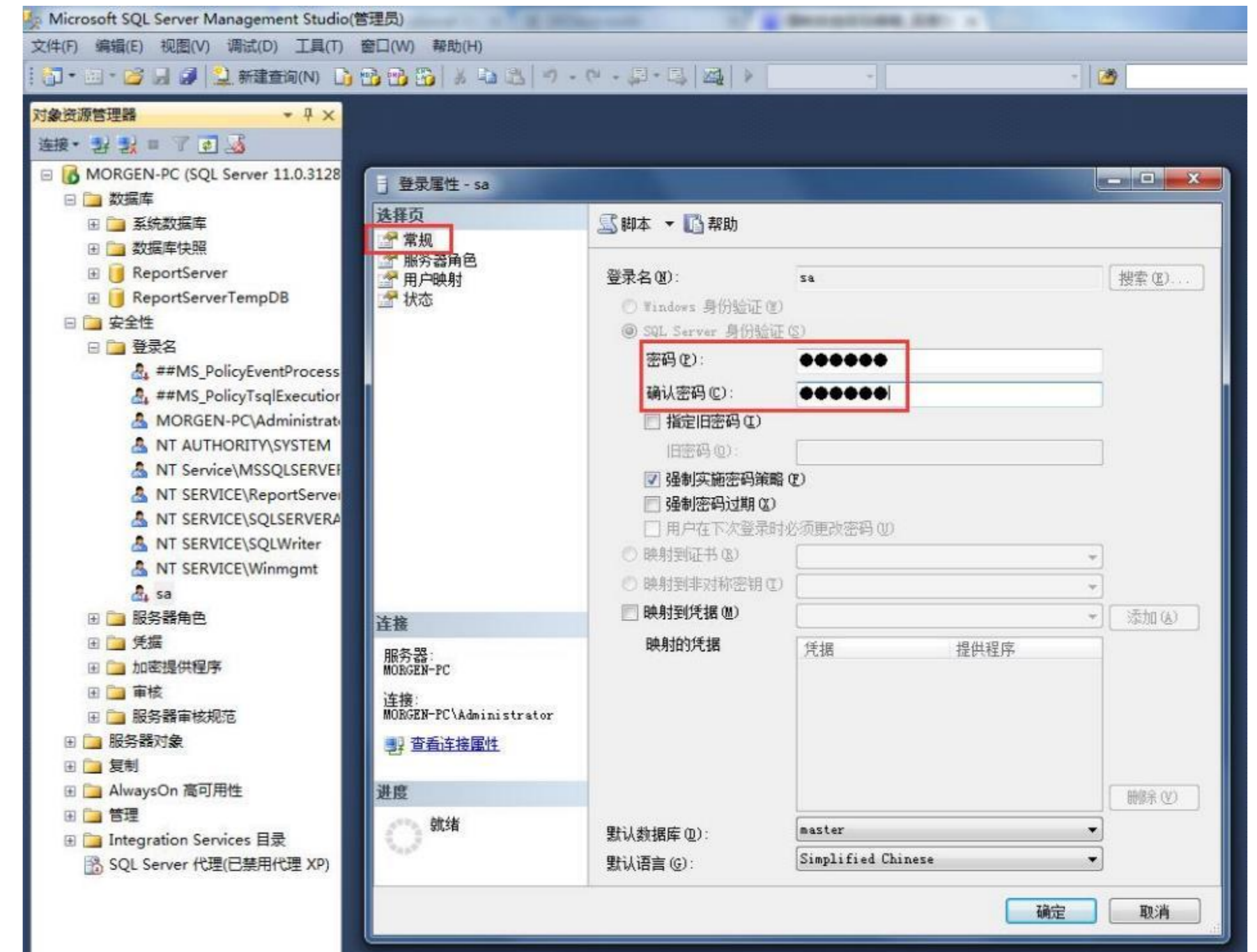
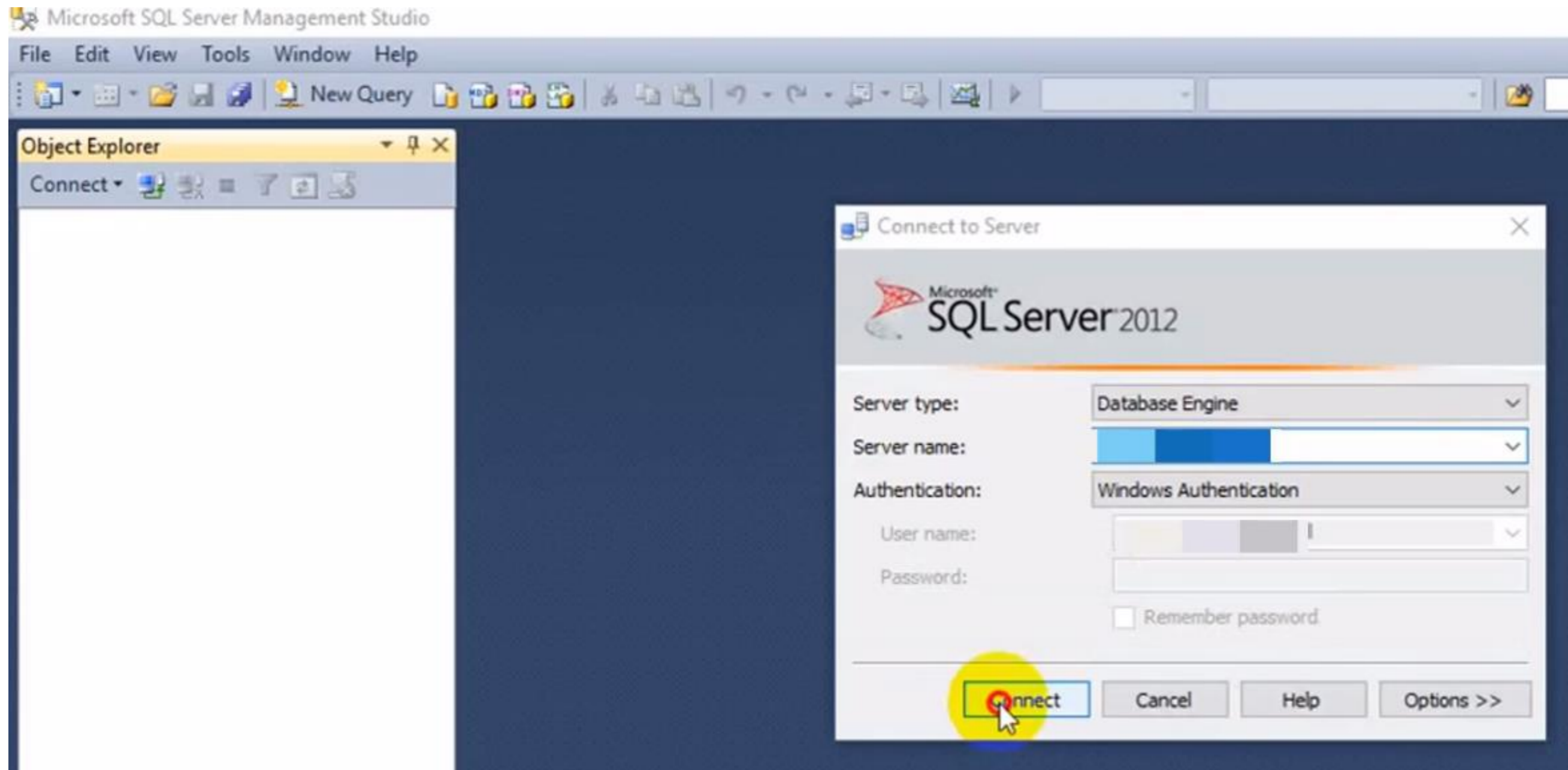
Microsoft®
SQL Server® 2012

SQL Server Configuration

.....
Before connecting iVMS-4200 to the database, you need to make some settings for SQL Server before connection.

SQL Server Configuration

1. Set user password

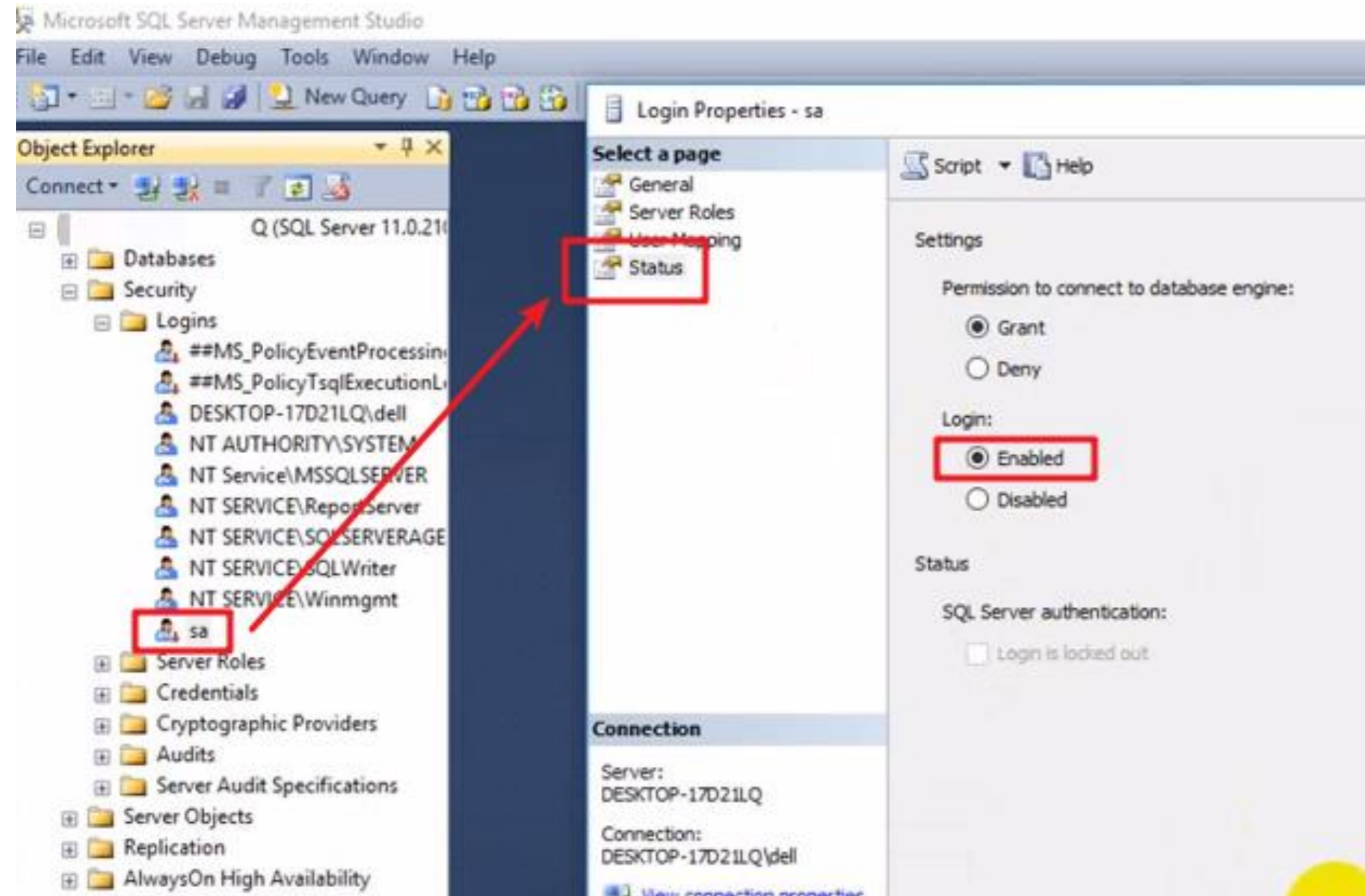


1. After the installation is complete, run SQL Server 2012, see the above interface, log in using Windows authentication;

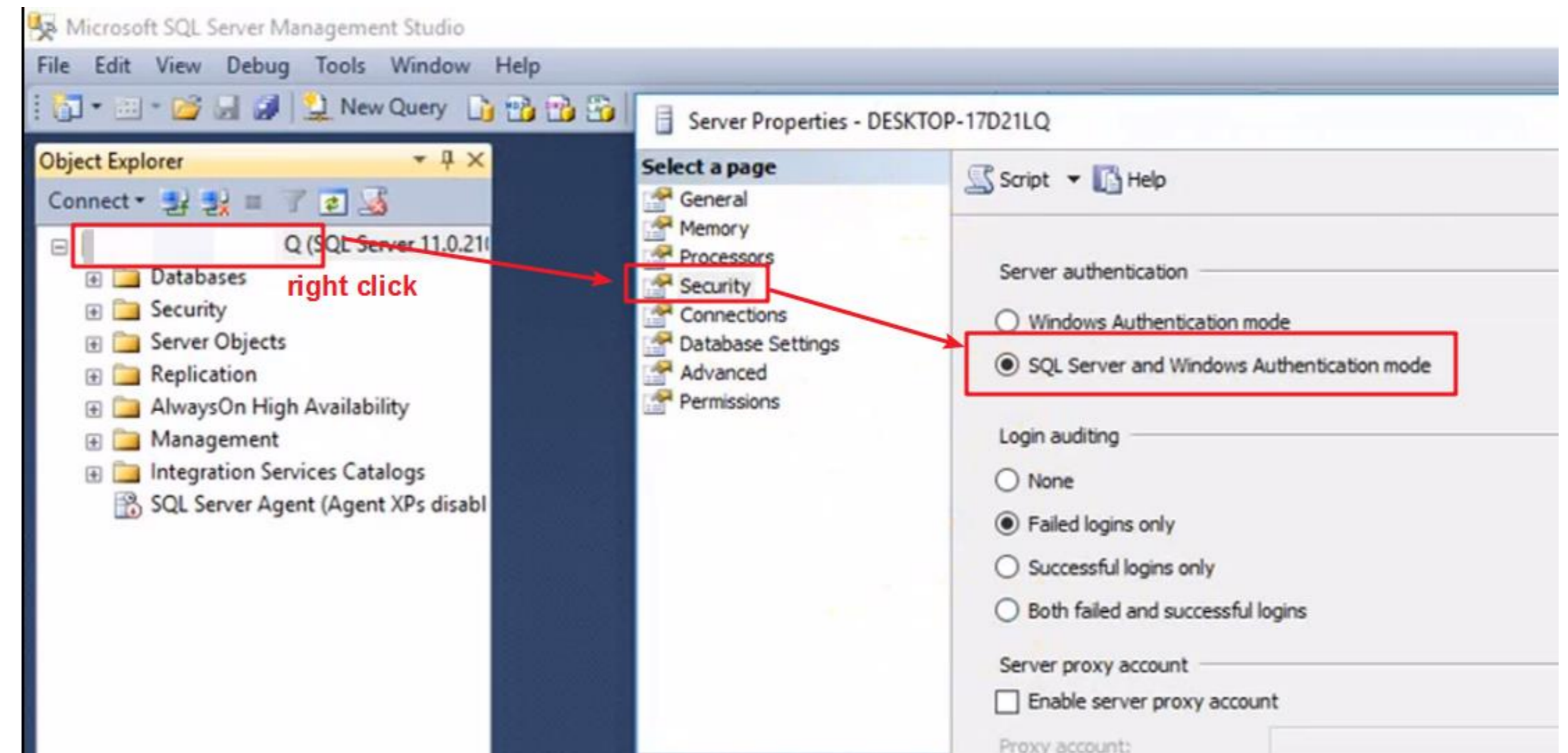
2. Set the connection password for the user sa, please remember to use this password after connecting other software to the database.

SQL Server Configuration

2.Modify user permissions, authentication mode



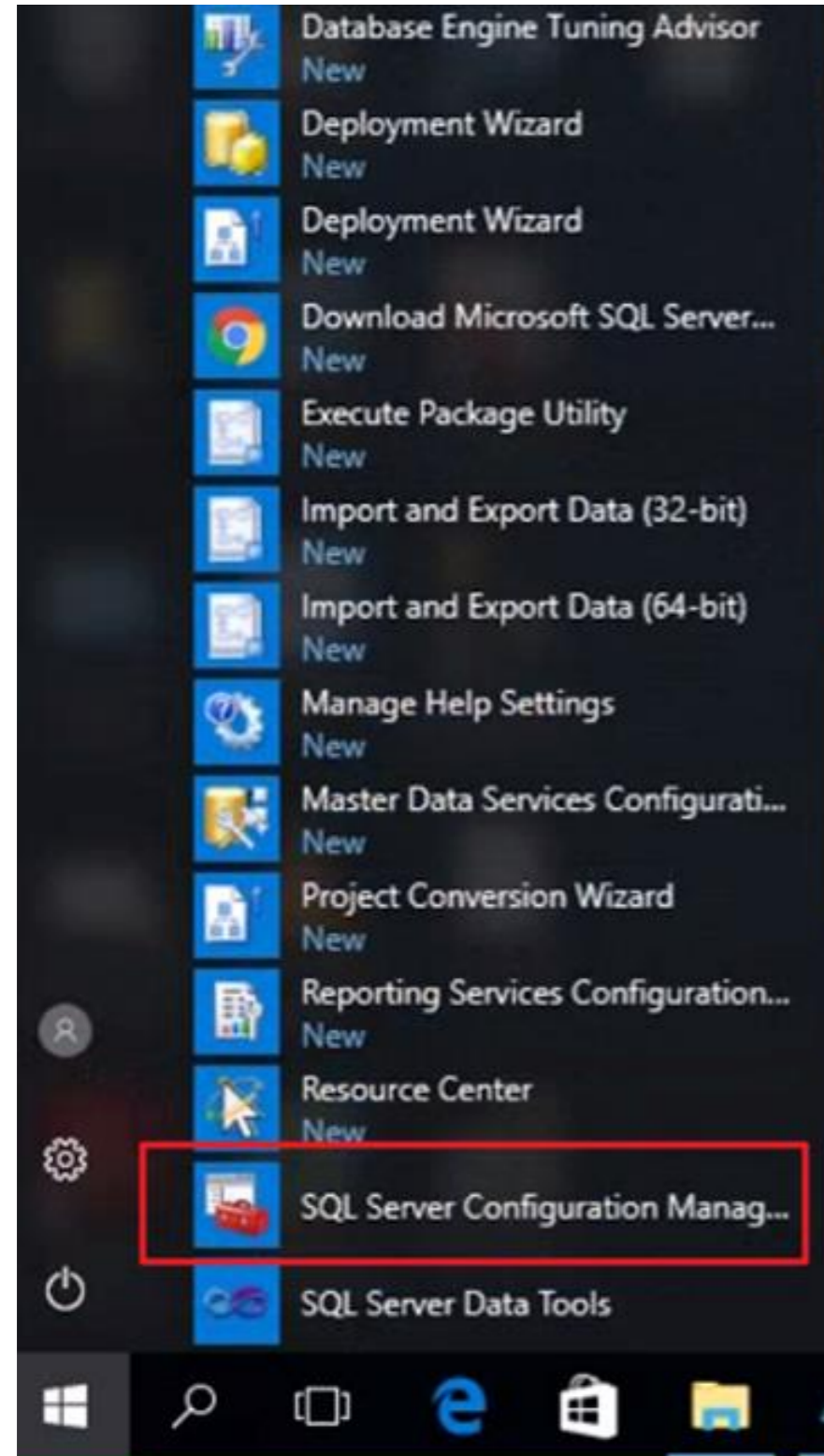
3. Set user sa to "grant" and "enabled"



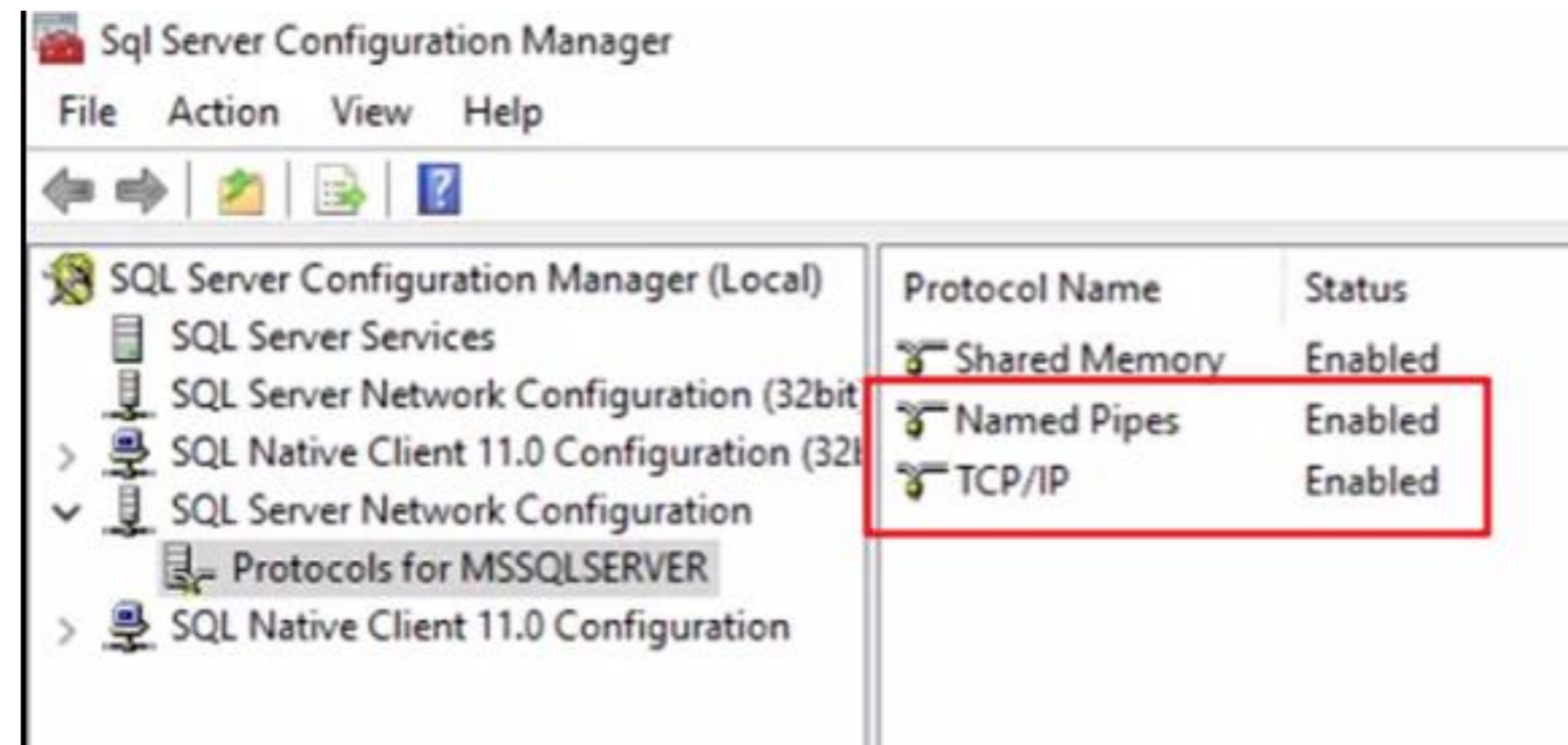
4. Modify the database authentication mode to SQL Server and Windows authentication mode

SQL Server Configuration

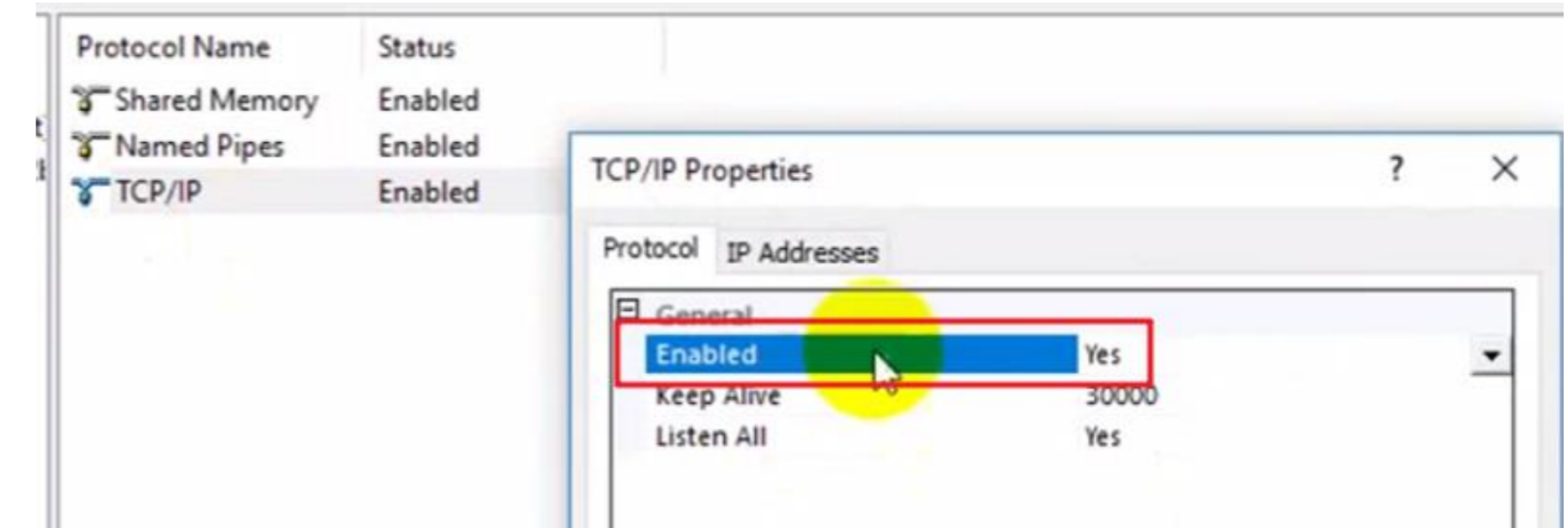
Enable Protocols



5. Open SQL Server Configuration Manager



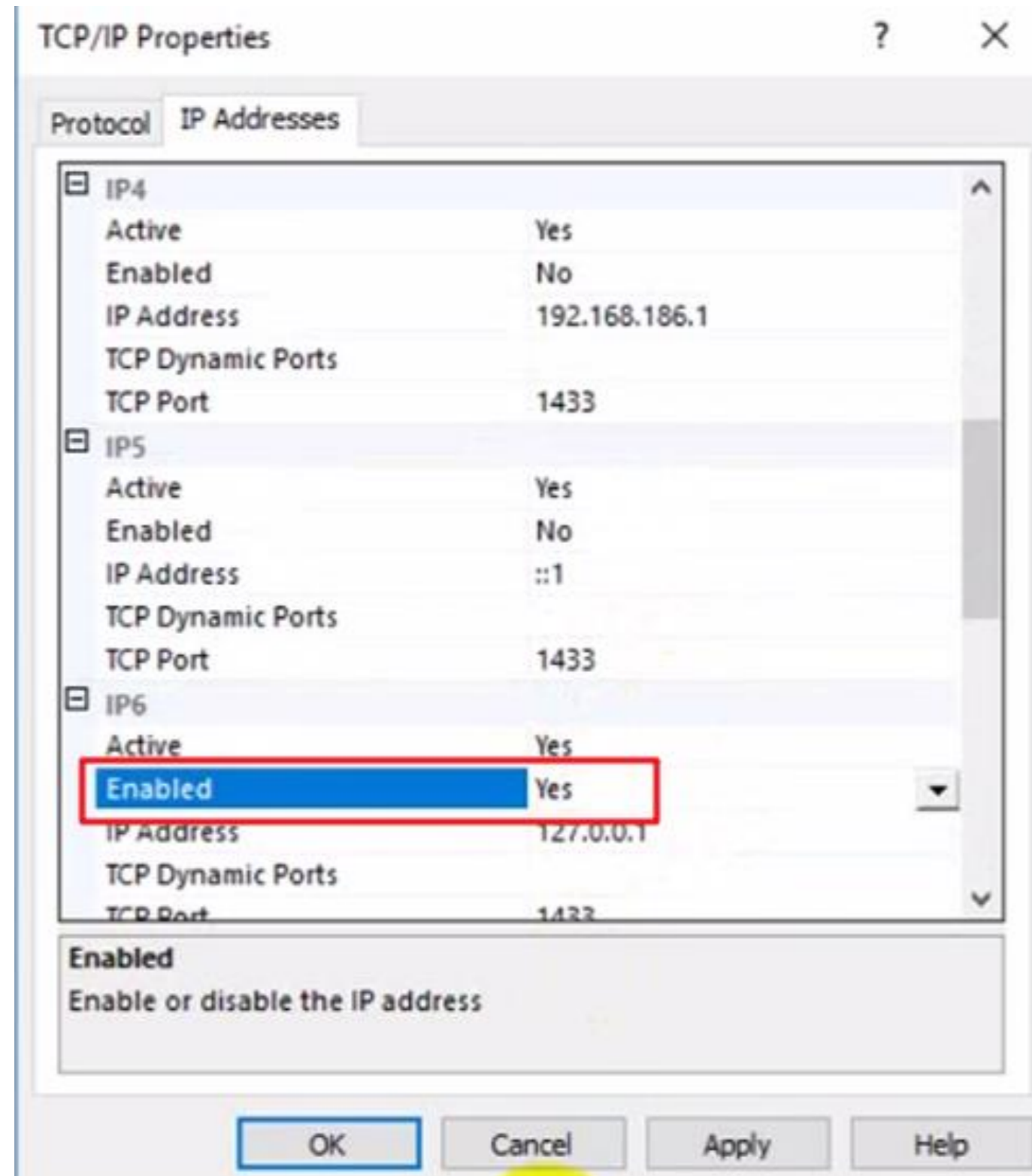
6. Right-click to enable Named Pipes and TCP/IP protocols respectively.



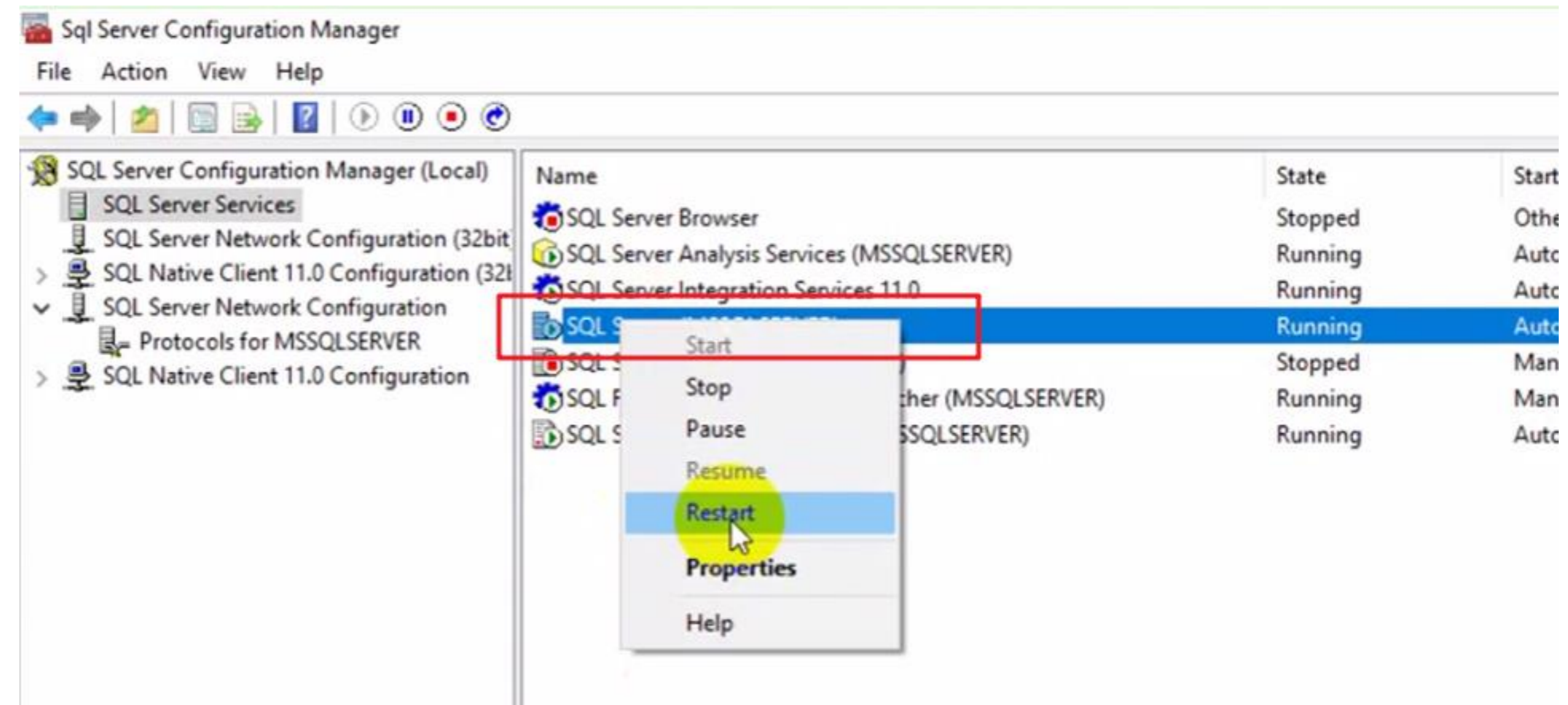
7. Right click on the property and set it to Enabled

SQL Server Configuration

Enable IP, restart service to take effect



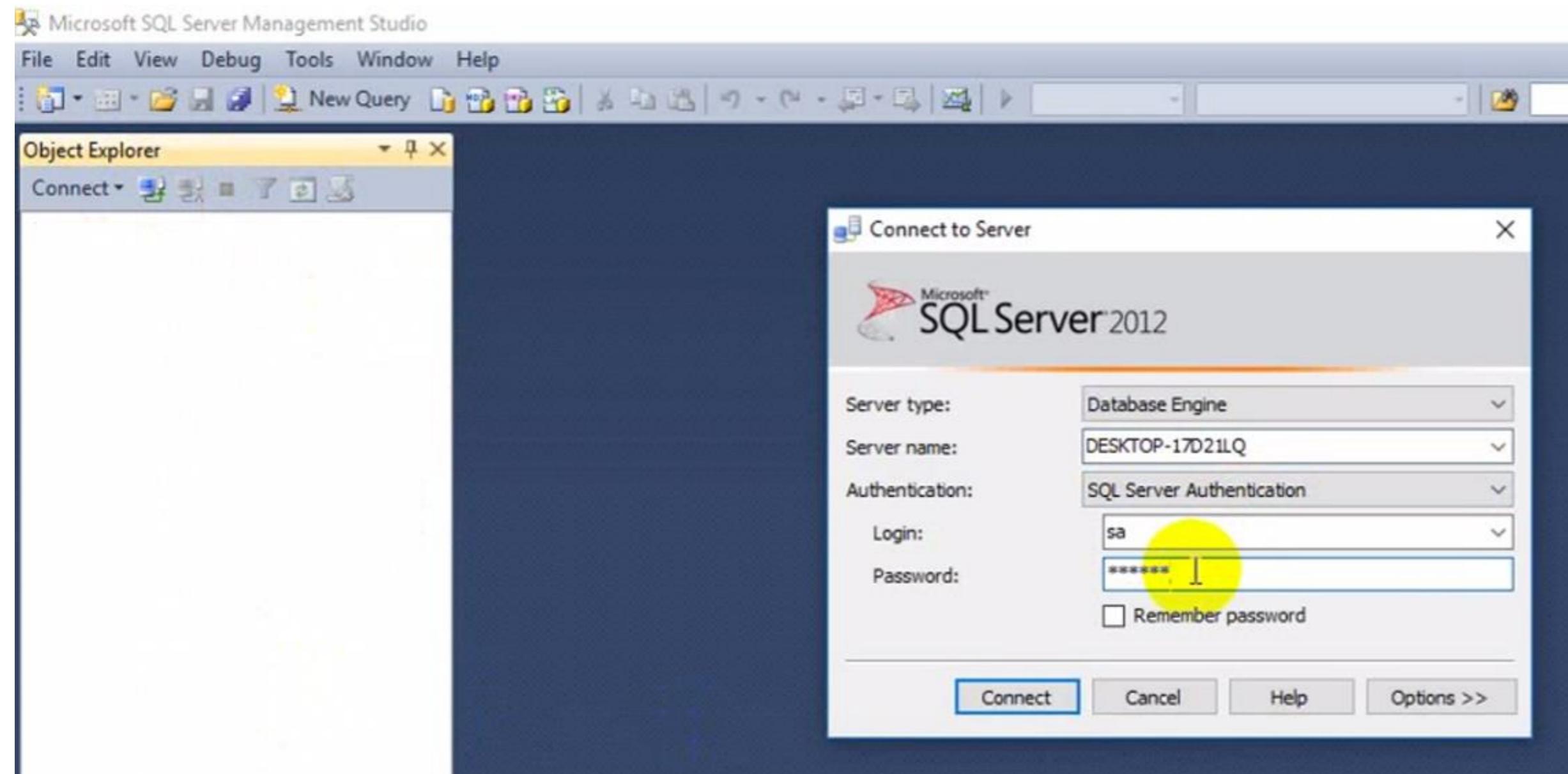
8. Set the computer's IP setting to "Yes"



9. Restart SQL Server service to make the changes take effect

SQL Server Configuration

Use sa account to test connection to database



10. Reopen SQL Server 2012 and switch to SQL SERVER authentication;

Login name: sa

Password: The password you set in step 2

If you can successfully log in, the previous changes have taken effect.

11.If you can connect SQL Server successfully in previous step, please follow another operation video to connect iVMS-4200 to SQL Server

SQL Server installation and configuration review

