



One Window to a World of Learning

Hikvision's Classroom Hub Solution

HIKVISION



Headquarters

No.555 Qianmo Road, Binjiang District,
Hangzhou 310051, China
T +86-571-8807-5998
Business: overseasbusiness@hikvision.com
Technical Support: support@hikvision.com

HIKVISION



In-Class Applications

Classroom Hub solution provides intelligent in-class applications to boost digital teaching efficiency and quality. All those smart functions, such as built-in whiteboard, wireless projection, and more, are based on Hikvision Interactive Flat Panel.

Hikvision Interactive Flat Panel displays take the digital teaching experience to an entirely new level. They integrate the latest technologies in touch controls, high-definition display, video processing, network communications, interactivity, and audio features, with abundant third-party teaching resources available as well. Teachers can intuitively create digital instruction to boost the learning environment and experience, enjoying more interactivity with students.



Advanced digital teaching

The Interactive Flat Panel offers smooth writing experience, by delivering 20-touch annotation, graphic recognition, and image insertion, etc. Teachers and students can write or draw quickly and creatively.



Easy sharing, better Interaction

Teachers can share multiple teaching formats, including PowerPoint, Word, PDF, etc., easily via NFC, software, and physical interfaces. With that flexible projection, interaction can be quick and easy.

Useful assistant tools



Various teaching tools, including recording, frozen screen, spotlight, and screen shot, help teachers enhance the teaching efficiency.

Background

In today's age, the need for digital transformation and technologies has increased rapidly and governments in countries across the world are paying more attention on the digitalization of schools and education sectors.

Students growing up in our technological world are eager for more immersive learning experiences and better educational resources. As remote learning has come on leaps and bounds in recent years, an easy-to-use remote learning system becomes the priority for teachers and students.

However, basic teaching tools limit the education creativity and efficiency. Some displays cannot support smooth demonstration. Even teachers need a lot preparation before classes, which is time-consuming and inefficient.

In response to the urgent demands, Hikvision combines its own software and hardware applications to launch Classroom Hub solution to empower teachers, students, and operators with more connectivity, innovation, and intelligence.

Read on to find out more.

Hikvision's Solution

Hikvision's Classroom Hub Solution extends real classrooms to digital, virtual classrooms, bridging all kinds of gaps between teaching and learning.

This solution overcomes a variety of common challenges by offering in-class applications, remote learning, multi-classroom, and central management. It empowers students to learn more easily, effectively and comfortably both on campus and remotely, and help teachers and operators enjoy more flexibility of instruction and management.

Flexible and abundant resources

The Interactive Flat Panel supports OPS, supporting to download more third-party applications. Teachers and students can get access to more great resources for better instruction.



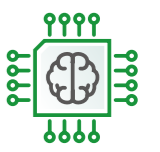
Superior industrial design

Equipped with world-class panel technologies, rounder designer, 4K display, flexible visual aids, and better eye protection.



High configuration

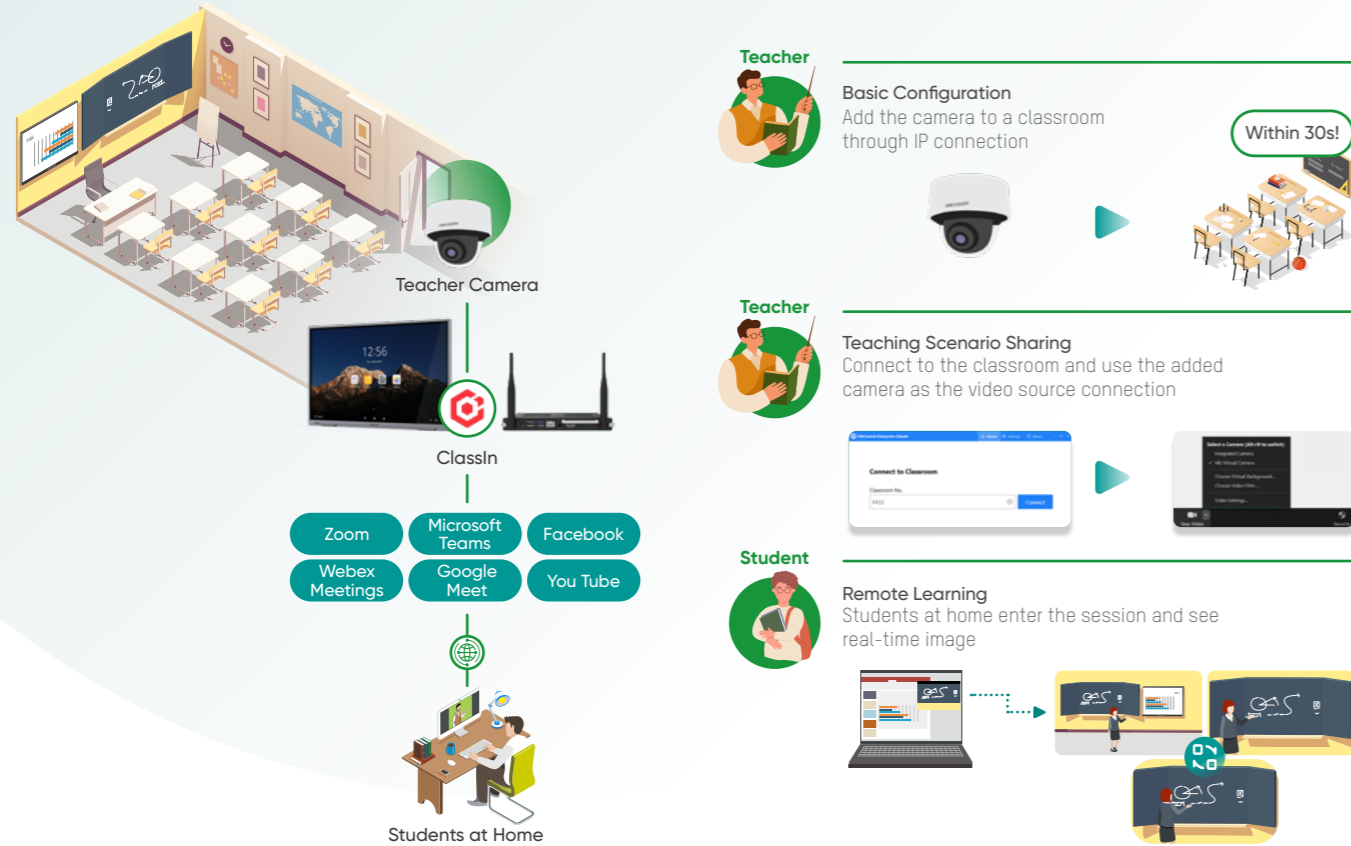
Equipped with Android 11, full-featured Type-C, and advanced chip, interactive flat panel can offer stable and powerful performance.



Remote Learning

Classroom Hub solution offers a remote learning method for students at home with an easy-to-use and immersive experience. Leveraging professional, AI-enabled teacher cameras and our lightweight ClassIn software, this remote learning solution shares class instruction instantly with remote students while maintaining the same engagement level. Students will enjoy the high-definition images from the teacher and the Interactive Flat Panel.

Also, camera tracking and close-up shot can provide an immersing environment. With easy configuration and high compatibility, teachers and students can enjoy an exciting new path to a great education.



Easy configuration

With the convenient configuration, teachers don't need to pay too much energy on the preparation. They can connect the camera easily to share the classroom view and just focus on education itself.

Flexible device options to meet various project demands

Hikvision provides two options to satisfy different needs. Basic camera and microphone can meet the underlying demand. Also, the education sharing device enables professional lecture recording and smooth switching among views of different cameras. Teachers and students can review the records for further improvement.

Immersive learning experience

Students will get more of a first-hand experience with smooth switching among various views of the teachers with excellent image quality. They can dive into the immersing environment with all materials, annotations, and POVs presented in high resolution.

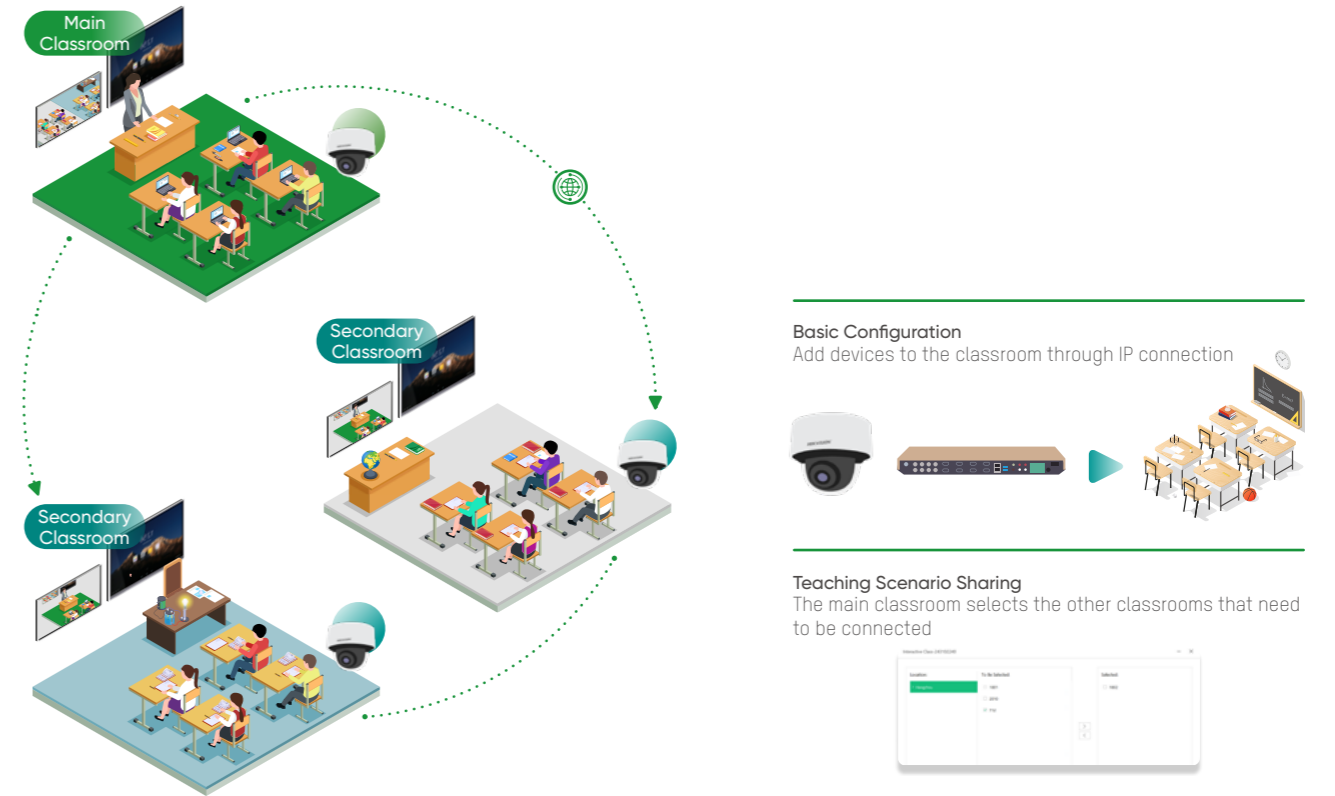
Perfect compatibility

ClassIn software supports real-time remote sharing as well as integration with mainstream video conferencing applications like Zoom, Webex and more. Users will also find support for RTMP video steaming to the live broadcast platform such as YouTube and Facebook.

Multi-Classroom Learning

Classroom Hub solution provides intelligent in-class applications to boost digital teaching efficiency and quality. All those smart functions, such as built-in whiteboard, wireless projection, and more, are based on Hikvision Interactive Flat Panel.

Hikvision Interactive Flat Panel displays take the digital teaching experience to an entirely new level. They integrate the latest technologies in touch controls, high-definition display, video processing, network communications, interactivity, and audio features, with abundant third-party teaching resources available as well. Teachers can intuitively create digital instruction to boost the learning environment and experience, enjoying more interactivity with students.



Real-time engagement

The camera can catch every feedback, including hands up, blackboard writing, etc. Students can see all the writing features, and teachers can notice all feedbacks both in the main and secondary classrooms, to guarantee teaching quality and interactivity.

Solution Features

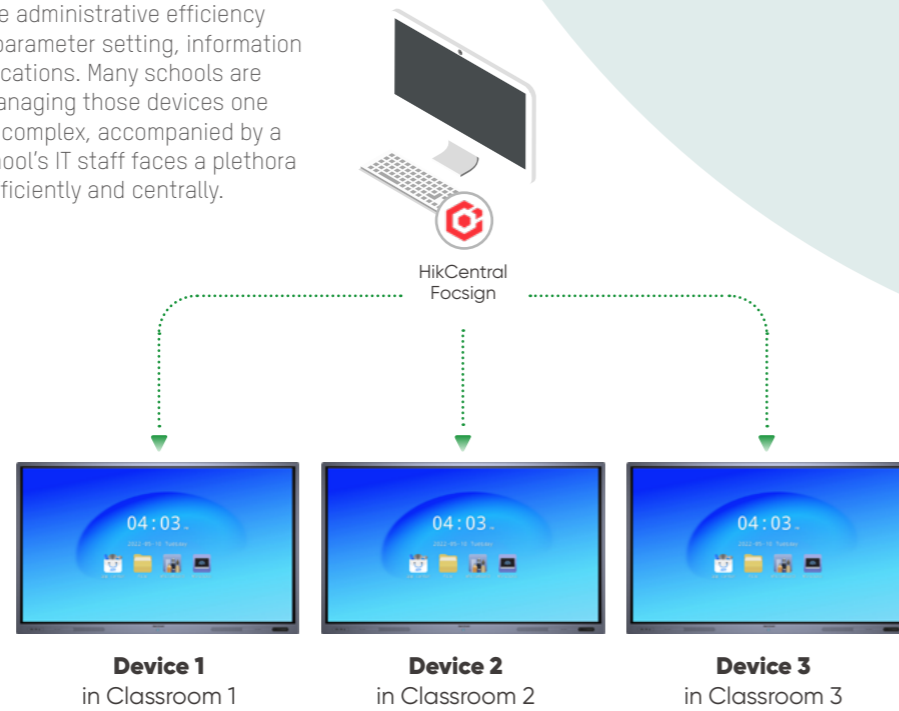
Students in remote classrooms can access the best educational content available via ClassLink. The main classroom can interact with three secondary classrooms at the same time, which enables a vastly increased breadth of opportunity

Excellent resources sharing

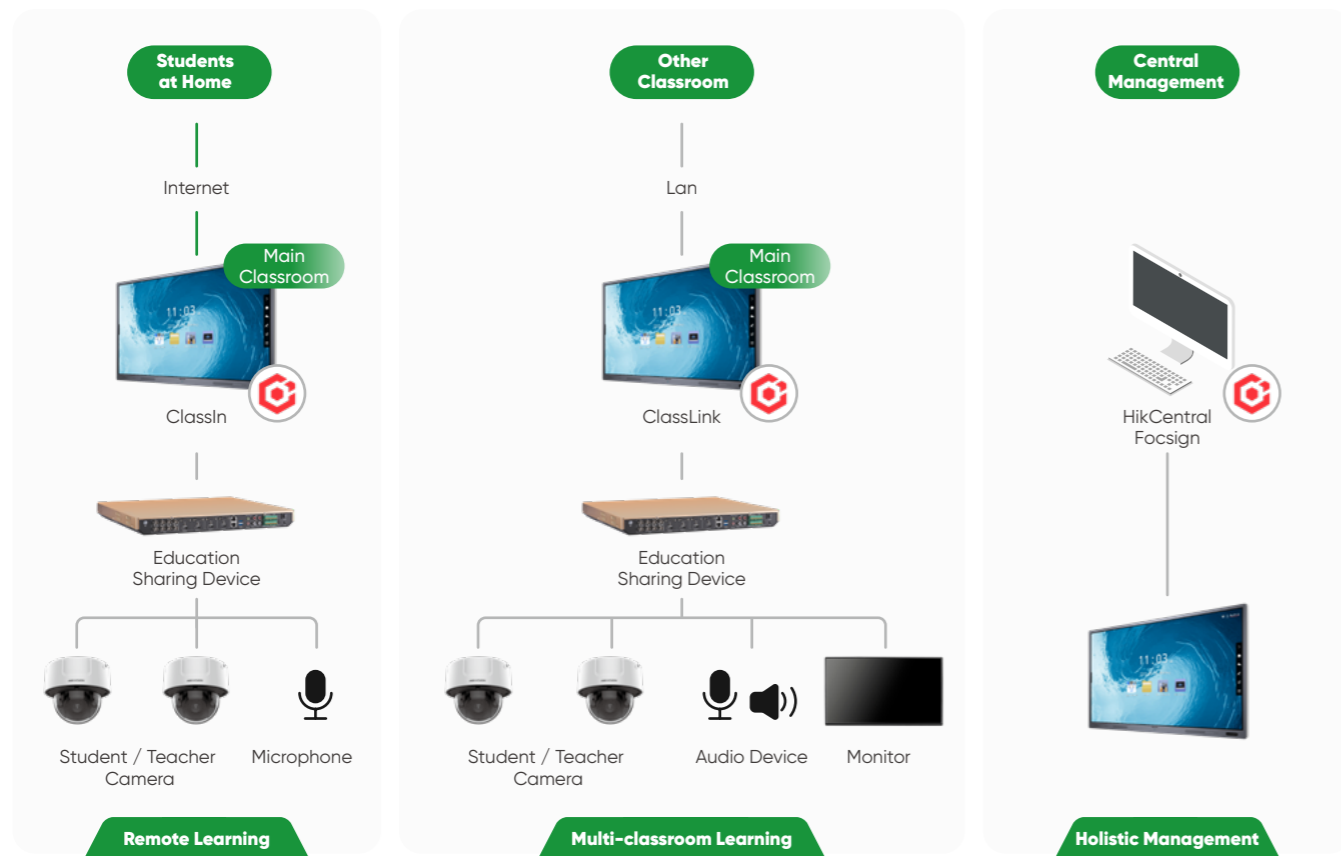
Central Management

Central management can enhance the administrative efficiency along with instruction by controlling parameter setting, information display, and rapid installation of applications. Many schools are equipped with interactive displays. Managing those devices one by one is time-consuming and highly complex, accompanied by a high margin for error. Therefore, a school's IT staff faces a plethora of hassles configuring all the devices efficiently and centrally.

- Reboot
- Shut down
- Restore to factory default
- Set screen saver password
- Install software
- Information release



Solution Topology



Product Showcase



Model	DS-D5165TS/P(B)	DS-D5175TS/P(B)	DS-D5186TS/P(B)
Screen Size(Diagonal)	65"	75"	86"
Application Scope	20 m ² (10 to 20 people)	30 m ² (20 to 30 people)	40 m ² (30 to 50 people)
Backlight	DLED		
Resolution	3,840 × 2,160 @ 60 Hz		
Viewing Angle	Horizontal 178°, vertical 178°		
Response Time	6 ms		
Contrast Ratio	4000:1		
Brightness	400 cd/m ²		
Touch Control	20 Points		
Storage	4GB Memory + 32GB Storage		
Operation System	Android 11 & Windows (Optional)		

Teacher / Student Camera



- iDS-2CD7186G0-IZS(8-32mm)(HIK EDU)/TEA
- iDS-2CD7186G0-IZS(2.8-12mm)(HIK EDU)/STU
- Flexible panoramic and close-up view-switching
- Automatic teacher tracking

ClassIn



- Quick connection and low latency
- Configurable clarity up to 1080p
- Support simultaneous audio and video sharing

ClassLink

- Synchronized teaching between different classrooms
- Support interaction among multiple interactive flat panels

Education Sharing Device



- DS-8108LHFHI-K2
- Multiple live-view modes
- Simultaneous connections up to 5 IP and 8 analog cameras
- 24h Continuous local recording

HikCentral FocSign

- Information release
- Application download
- Turn on/off
- Volume and brightness adjustment
- Parameter configuration