

The top half of the page features a large, abstract graphic. It consists of several concentric, semi-circular arcs in shades of gray and white, creating a sense of depth and motion. On the left side, there are several horizontal bars of varying lengths, resembling a barcode or a data visualization. In the center-right, there is a white crosshair with a central dot, overlaid on a dark red circular area. The Hikvision logo is positioned in the upper right corner of this graphic area.

**HIKVISION**

# DVR/NVR DVD-RW Installation Guide (Model HK-DVDRW)

For the Following Hikvision NVR/DVR Models:  
DS-9616NI-ST, DS-9632NI-ST, DS-9664NI-ST,  
DS-9632NI-I8, DS-9664NI-I8,  
DS9008HWI-ST, DS-9016HWI-ST

## Contents

---

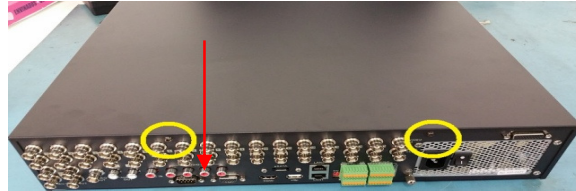
<b>Installing a Hikvision (HK-DVDRW) DVD-RW Drive into a DVR or NVR</b>	<b>3</b>
<b>9000/9600 Series</b>	<b>3</b>
Remove DVR/NVR Top Cover	3
Remove Left Bracket	4
Unmount PCB	6
Attach the DVD-RW Drive	7
Reassemble the DVR/NVR	8
<b>7300 Series</b>	<b>9</b>
Remove Enclosure	9
Attach Drive Brackets	9
Reassemble the DVR	9

## Installing a Hikvision (HK-DVDRW) DVD-RW Drive into a DVR or NVR

**9000/9600 Series** The Hikvision 9000 Series and 9600 Series of Digital Video Recorders (DVRs) and Network Video Recorders (NVRs) support a DVD-RW drive to read and write data. The DVD-RW drive installs in two specific, empty hard drive bays.

### Remove DVR/NVR Top Cover

1. Remove power from the DVR/NVR.
2. Remove and retain the two (2) screws on the back of the DVR/NVR case.



*Figure 1 DVR/NVR Back Case Screws*

3. Remove and retain the three (3) screws on *each* side of the DVR/NVR case.



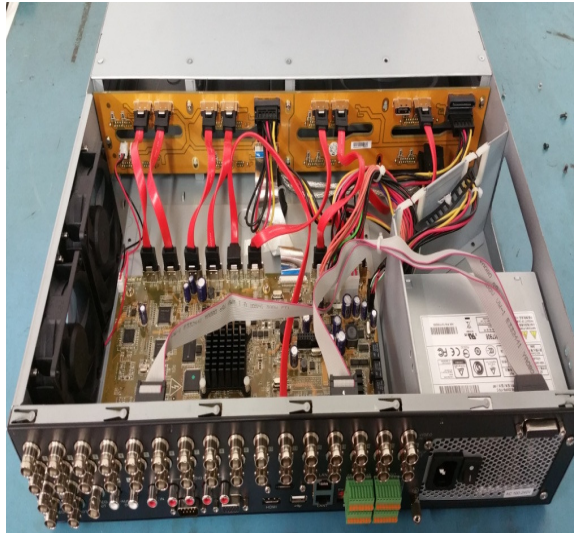
*Figure 2 DVR/NVR Right Side Case Screws*



*Figure 3 DVR/NVR Left Side Case Screws*

**Remove  
DVR/NVR Top Cover**  
(continued)

4. Remove DVR/NVR case.



*Figure 4 DVR/NVR with Case Removed*

**Remove Left Bracket**

**NOTE:** DVD-RW drive must be mounted only in the space created by the two left-most drive bays.

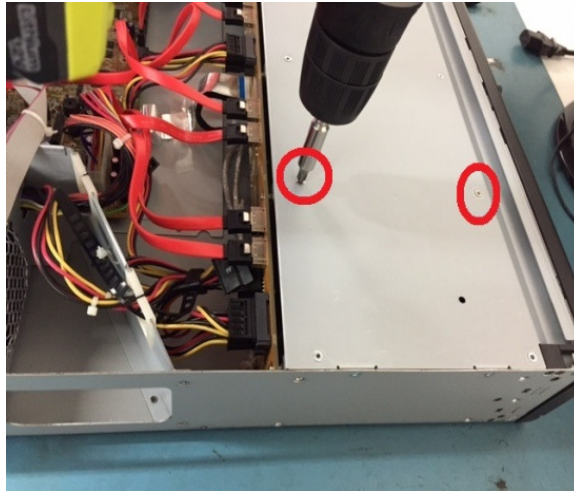
1. Flip the DVR/NVR over to reach the bottom screws.
2. Remove and retain the four (4) screws from the bottom of the DVR/NVR.
3. Remove and disregard the two (2) screws inside the DVR/NVR where the metal brackets are located.



*Figure 5 DVR/NVR Bottom Screws*

4. Remove and disregard the two (2) left drive bracket screws from the inside top frame.

**Remove Left Bracket**  
(continued)



*Figure 6 Left Drive Bracket Screws on Inside Top Frame*



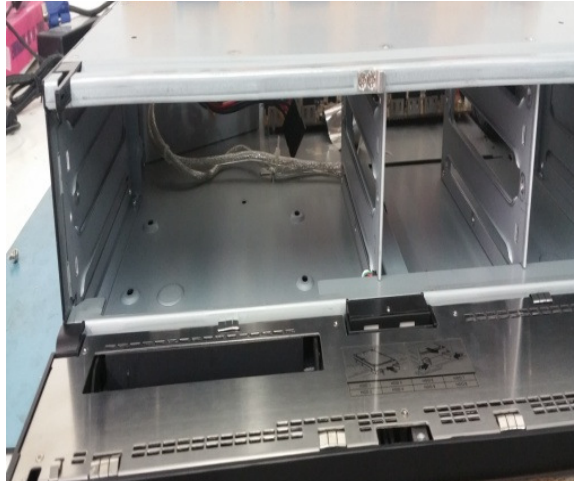
*Figure 7 Left Drive Bracket*

5. Remove and discard the left bracket.



*Figure 8 Left Drive Bracket Removed*

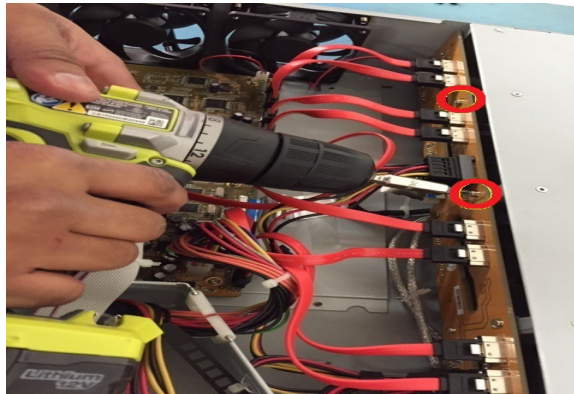
### Remove Left Bracket (continued)



*Figure 9 Left Two Drive Bays with Drive Bracket Removed*

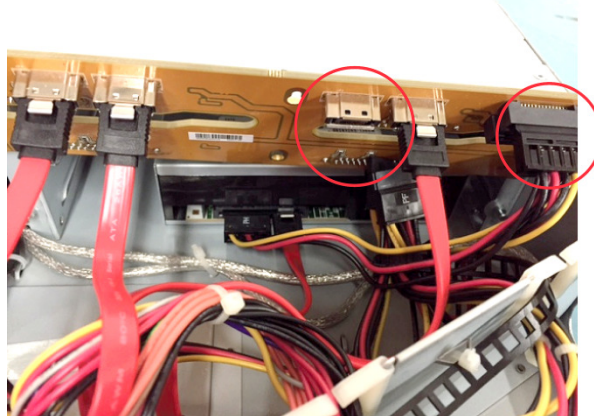
**Unmount PCB** Unmount the internal printed circuit board (PCB) as follows:

1. Remove and retain the two (2) screws from the internal 8-bay PCB.



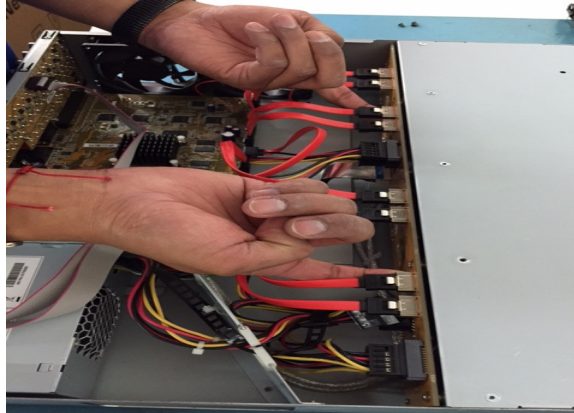
*Figure 10 Removing Screws from the 8-Bay PCB*

2. Looking at the PCB from behind the DVR/NVR remove the rightmost PCB power harness connector and the second SATA connector from the right.



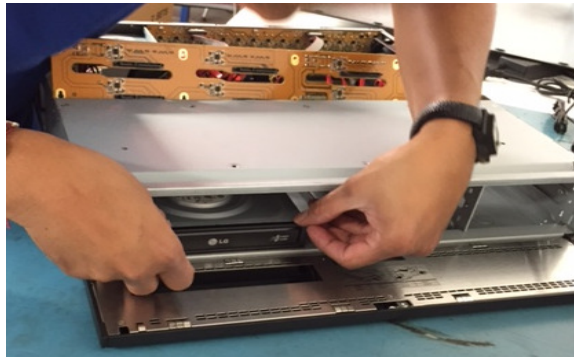
*Figure 11 PCB SATA Connector and Power Harness*

- Unmount PCB** (continued)
- Slide the PCB up and away to detach.



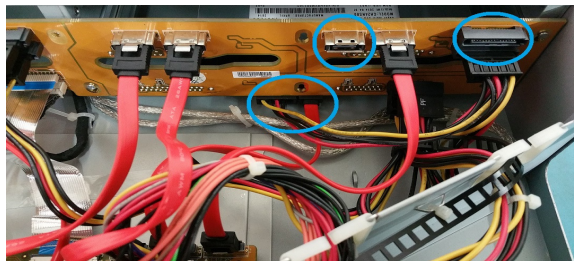
*Figure 12 Detaching the 8-Bay PCB Aside*

- Attach the DVD-RW Drive**
- Pull down the front panel to allow access to the drive bays.
  - Insert and position the DVD-RW drive into the space created by removing the left drive bracket. The DVR/NVR front panel swing-down door should allow direct access to the DVD-RW drive extendable disk tray.



*Figure 13 Attaching the DVD-RW*

- Use the bottom bracket screws to fasten the DVD-RW drive to the bottom of the drive bay.



*Figure 14 DVD-RW Drive Cables*

- Feed the PCB power harness and SATA cables under the PCB and connect them securely to the DVD-RW drive.

**Reassemble  
the DVR/NVR**

1. Re-attach the PCB to the DVR/NVR.
2. Close the front panel.
3. Re-attach the top cover to the DVR/NVR.
  - Affix the three left panel screws
  - Affix the three right panel screws
  - Affix the two back panel screws



*Figure 15 Reassembled DVR/NVR*

4. Apply power to the DVR/NVR and test the DVD-RW drive to ensure that it functions properly, both mechanically and electronically.



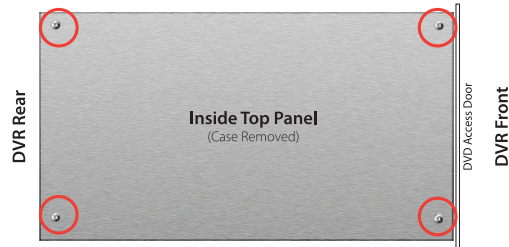
**7300 Series** Add a DVD-RW drive to Hikvision's 7300 Series of DVRs as follows:

**Remove Enclosure**

1. Remove power from the DVR.
2. Remove the screws holding the DVR cover to the chassis.
3. Remove the cover from the chassis.

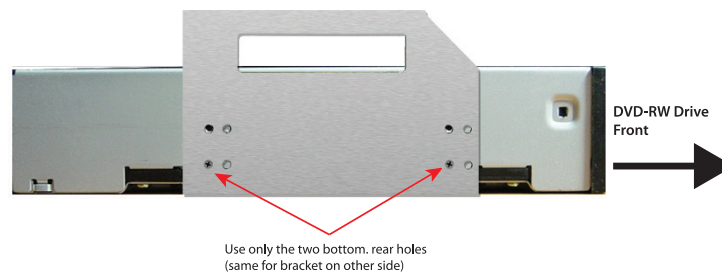
**Attach Drive Brackets**

1. Remove the two drive brackets behind the DVR DVD-RW door by unscrewing the four screws holding the brackets to the top panel.



**Figure 16 (Partial Top View, Case Removed)**  
Remove Four Screws to Detach Brackets from Top Panel

2. Screw one bracket to each side of the DVD-RW drive using two screws on each side (use only the two bottom, rear screw holes).



**Figure 17 (Side View) Attach Brackets to DVD-RW Drive with Two Screws per Bracket**  
(Use Only the Two Bottom, Rear Screw Holes)

3. Screw the two brackets, now holding the DVD-RW drive, back onto the top panel. Ensure the DVD-RW drive door faces the front of the DVR.

**Reassemble the DVR**

1. Connect the power harness and SATA cable securely to the DVD-RW drive.
2. Reattach the cover to the chassis.
3. Apply power to the DVR and test the DVD-RW drive to ensure that it functions properly, both mechanically and electronically.