

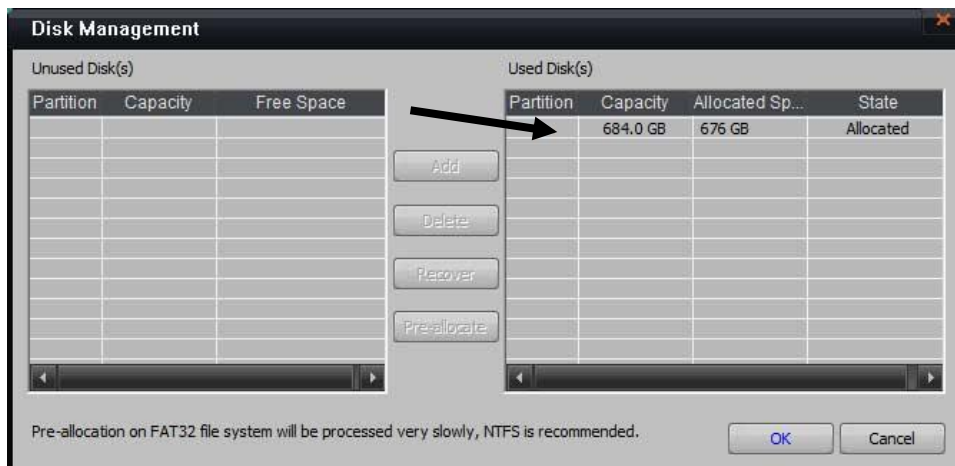
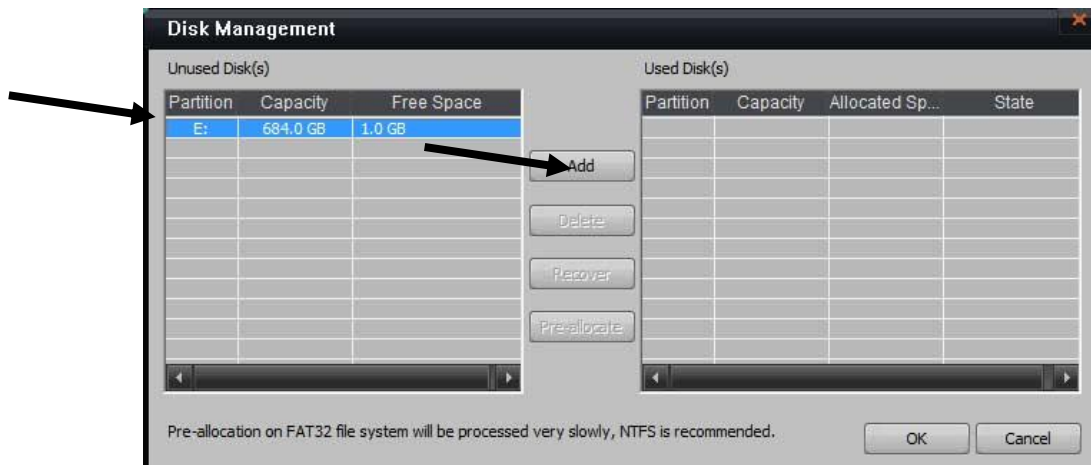
Title:	Compression Card Installation for Microsoft Windows 32 and 64 bit				
Date:	4/12/2011	Version:	2.0	Pages	1
Product:	DS-4xxx Compression cards (encoders)				
Action Required:	Information Only				

The following specifications are suggested minimums only, and are subject to change without notice. For more detailed information, such as pin-out diagrams, etc. please refer to the appropriate manual.

Aside from custom applications, HIKvision compression cards are designed to be used with HIKvision's **iVMS 2000** software, which can be downloaded here: hikvisionusa.com/downloads.html

Before installation:

1. Hard Drives: the iVMS 2000 software that manages the compression cards **WILL NOT write video files to the "C" drive**, therefore at least one other drive **MUST** be installed on the server.



Title:	Compression Card Installation for Microsoft Windows 32 and 64 bit				
Date:	4/12/2011	Version:	2.0	Pages	1
Product:	DS-4xxx Compression cards (encoders)				
Action Required:	Information Only				

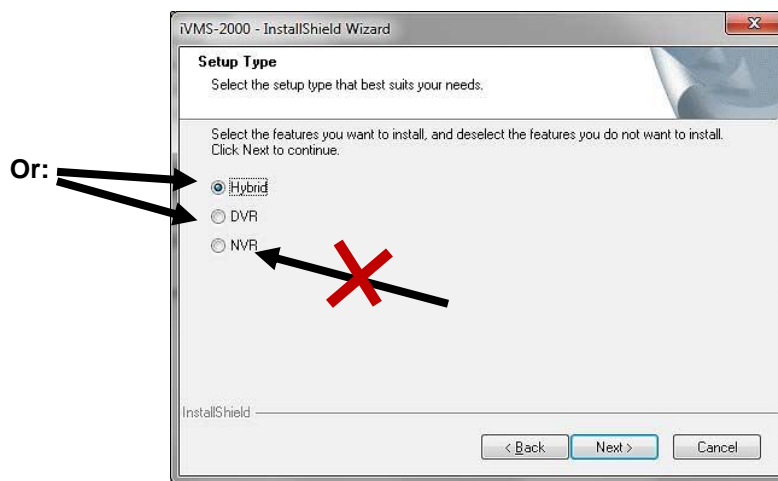
2. CPU: It is suggested to use motherboard with Intel P3, C4, P4, Core2, Core4 CPU.
3. Motherboard. It is also suggested that motherboards from reliable manufactures such as Intel, Asus, Gigabyte, Microstar, etc., are used. Regardless of brand, it should have an Intel Chipset
4. One open PCI or PCI-Express slot per card.
5. System Memory: 1Gb or more, suggested 2Gb per card. **Notice:** More cards require more memory.
6. Display Adapter: To support high resolution live view/ record function of the card, it is suggested to use a high performance display adapter. Please kindly refer to the list below for tested models of compatible display adapters. Please notice that the driver of these display adapter must support BLT function.
 - a. ATI Radeon X1650/X1600 /X1550/X1300/X800/X600/X550/HD2400/HD2600
 - b. ATI Radeon 7000/7200/7500/8500 /9000/9200 /9500/9600
 - c. NVIDIA GeForce 8600GT/8500GT/8400GS/7600/7300LE/6600LE/6200LE
 - d. Nvidia Tnt/Tnt2, Geforce Mx 200/400/420/440 Fx5200/5600
 - e. INTEL845G/865G/ 915/945G/G31 integrated display unit
 - f. MatroxG450/550
7. Power Supply: 400W or above

Hardware Installation:

1. Disconnect power from the computer and remove the cover
2. Install the DS-4xxx card in an open PCI or PCI-Express slot
3. Reinstall the cover and power to the computer
4. Turn on the computer.
5. Windows will recognize the new card on boot-up and will ask for the driver
6. Click "Cancel" to stop the automatic driver installation. It will be installed manually instead.

Important Note:

For use with Hikvision compression cards the iVMS software MUST be installed as DVR or Hybrid, NOT NVR. If being applied to an existing installation as NVR, the iVMS 2000 MUST be uninstalled and reinstalled as DVR or Hybrid.

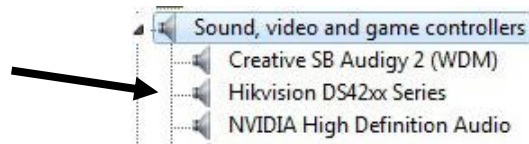


Title:	Compression Card Installation for Microsoft Windows 32 and 64 bit				
Date:	4/12/2011	Version:	2.0	Pages	1
Product:	DS-4xxx Compression cards (encoders)				
Action Required:	Information Only				

After hardware and driver installation, on reboot the iVMS 2000 software list all the detected analog cameras connected to the card. Refer to the iVMS documentation for more details.

Software: 32 bit Windows

7. Install the iVMS 2000 software.
8. Install the driver that comes with the iVMS 2000 software. It is located in *C:\iVMS-2000\Driver*
9. Run "Driver Install.exe"
10. **Windows XP:** also run the hotfix located in *C:\iVMS-2000\Tools*
11. Reboot the server.
12. Open the Device Manager and check that there is a Hikvision DS4xxxx Series driver listed:



13. If successful, you will see all the available camera channels in the Main Console of the iVMS 2000.
14. If unsuccessful, download the newer 32 bit driver from hikvisionusa.com/cardsupport, uninstall the existing driver, and manually install the downloaded driver.

Software: 64 bit Windows

Download the appropriate driver for a 64 bit Windows OS from: hikvisionusa.com/cardsupport

15. Save the driver installer to a folder on the target computer or a flashdrive.
16. Unzip the file
17. Run "Driver Install.exe"
18. If successful, you will see all the available camera channels in the Main Console of the iVMS 2000.
19. If unsuccessful, call HIKvision USA Tech Support at 909.895.0400